

Restek HPLC Column Kits for Faster, Easier Method Development

by Rebecca Wittrig, Ph.D., HPLC Product Marketing Manager



If the columns in the kits listed below don't appear to meet your needs, please contact our Technical Service group or your Restek distributor for information about custom kits.

Bulk Silica Available!



High Performance Silica Products

(lit. cat. # 59901)
Tight production specifications ensure highly consistent lot-to-lot performance from Restek's proprietary silica materials. This 6-page publication characterizes Pinnacle II™ and Pinnacle™ DB stock

bulk products—bare silica and silica with popular bonded phases—and illustrates typical results achieved by using them. Custom materials can be designed from a broad range of particle sizes, pore sizes, and phases.



HPLC Method Development Course

Many analysts anticipate developing a new HPLC method with apprehension. To help de-mystify this process, Restek, in cooperation with ChromVision, offers a dynamic, thorough two-day course on the subject, presented in a logical and systematic manner by an expert on the effects of adsorbent chemistry and structure on HPLC retention. It provides the knowledge and tools necessary for understanding why a particular stationary phase would be chosen for separating various analytes, and how to improve selectivity by choosing the proper eluent. Eight lectures cover all aspects of method development and are complemented and reinforced by four workshops. The course is especially useful to analysts working with pharmaceutical or biological/biochemical analytes. For more information about this and other Restek seminars, visit our seminars web page: www.restekcorp.com/seminar

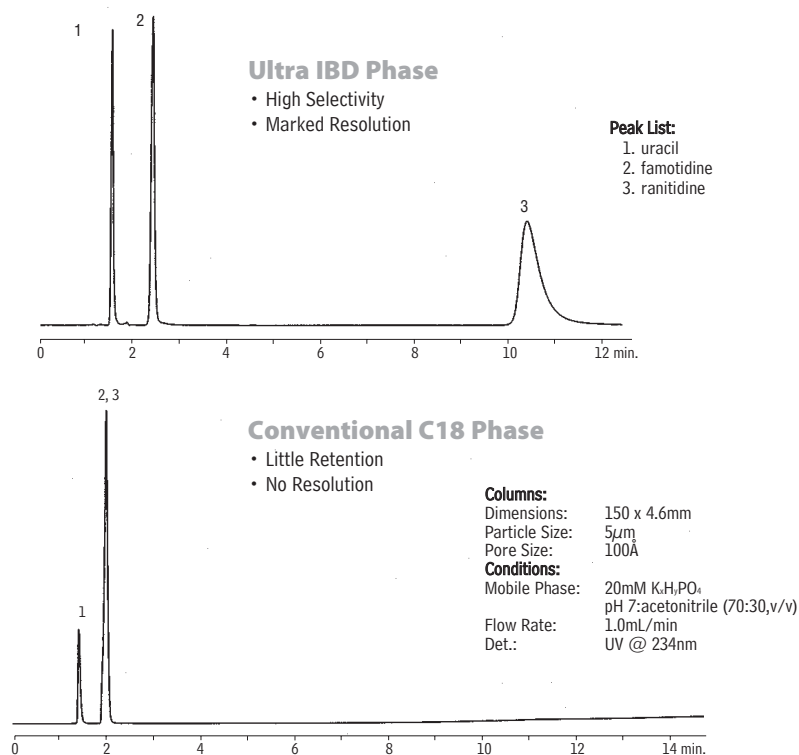
- ✓ Multiple stationary phases, for quick optimization of selectivity.
- ✓ Specific kits for MS or UV detection—both include columns specifically for basic analytes.
- ✓ Fast LC kits use economical cartridge design.

When developing a new HPLC assay, method development chemists often start with a C18 or C8 stationary phase, because these phases have proven useful for analyzing a wide range of organic compounds. Many analysts have learned, however, that a C18 or C8 stationary phase is not the best choice for every separation. A cyano-, pentafluorophenyl, or amino-containing stationary phase, a phase with embedded polar groups, or a phase designed for compatibility with highly aqueous mobile phases might provide superior resolution of target compounds (Figure 1).

To help analysts efficiently select the optimum stationary phase, we have assembled kits of columns for use in HPLC method development. The four columns in each kit incorporate a range of stationary phase types, are configured for rapid analyses, and are optimized for the detector type: 50 x 4.6mm ID columns containing 5µm packings for use with UV detection, 30 x 2.1mm ID columns containing 3µm packings for LC/MS. The Fast LC method development kits include four 30 x 2.1mm ID or four 30 x 4.0mm ID cartridges containing 3µm packings, and a cartridge holder.

Figure 1 Better chromatography for basic molecules, using an Ultra IBD column.

The base-deactivated column has a unique blend of hydrophobic and polar character for better resolution of closely related compounds.



HPLC and LC/MS Column Kits

Description	qty.	cat.#	price
LC/MS (1 Allure™ C18 (USP L1), 1 Allure™ PFP Propyl, 1 Allure™ Basix (USP L10), 1 Ultra Aqueous C18 (USP L1))	four 30 x 2.1mm, 3µm columns	25136	
LC/UV (1 Pinnacle™ DB C18 (USP L1), 1 Allure™ PFP Propyl, 1 Ultra Aqueous C18 (USP L1), 1 Ultra IBD)	four 50 x 4.6mm, 5µm columns	25137	

Fast LC Method Development Kit

Each kit includes four Fast LC Cartridges (Ultra C18 (USP L1), Ultra Aqueous C18 (USP L1), Ultra Cyano (USP L10), Ultra PFP (USP L43)) and a Fast LC cartridge holder.

Description	qty.	cat.#	price
Fast LC Development Kit	four 30 x 2.1mm columns	25296	
Fast LC Development Kit	four 30 x 4.0mm columns	25297	