

EZ No-Vent™ GC Column-MS Connector

Change Columns in Minutes Without Venting

by Donna Lidgett, GC Accessories Product Marketing Manager

new!

Now available for Varian 2000 Series MSs

- Save hours of downtime—100µm transfer line throttles vacuum and prevents MS pump-down.
- Easy to install and maintain—no special tools or plumbing required.
- Gold-plated body for inertness.
- Deactivated transfer line keeps analytes focused; high-temperature polyimide ferrules eliminate leaks at the problematic transfer line fitting.
- Lower cost than other “no-vent” fittings.
- Available for Agilent GCs with 5971/5972 or 5973 GC/MS, Varian Saturn 2000 Series MSs.

We designed the EZ No-Vent™ connector to be simple and easy to use. A critical orifice in the EZ No-Vent™ connector minimizes the amount of oxygen allowed into the MS source, eliminating the need for purge gas and enabling you to skip the lengthy vent and pump-down cycle otherwise required when you make a column change. This can save nearly a day of downtime with each column change. The EZ No-Vent™ connector easily attaches to the MS source without special tools or extra plumbing.

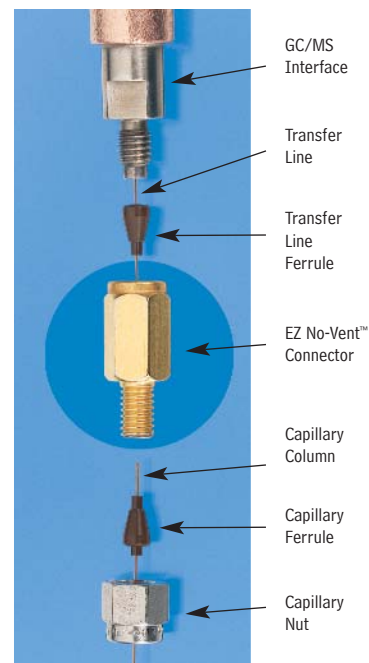
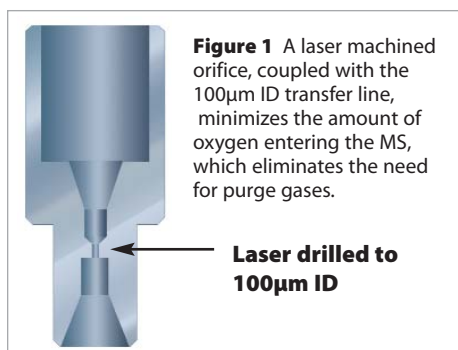
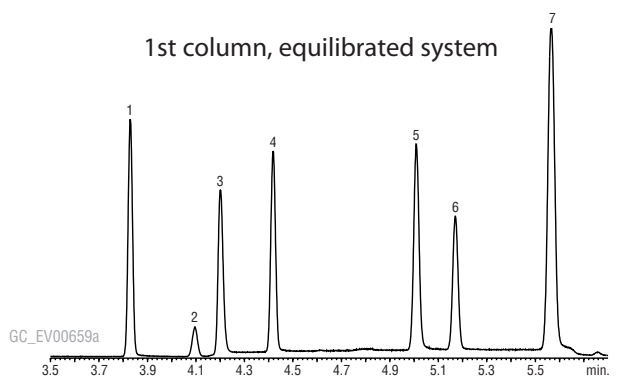
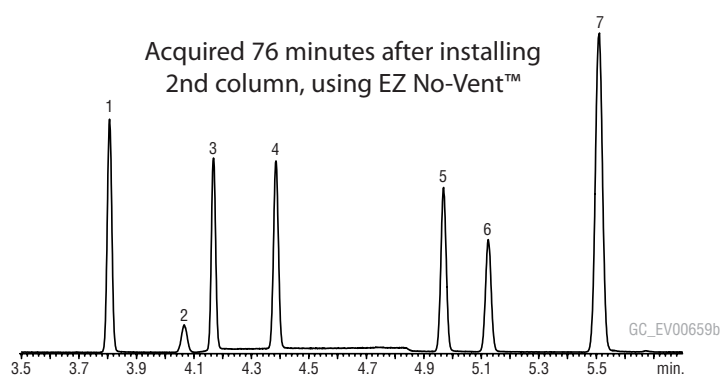


Figure 2 Sharp, symmetric peaks for gases show the EZ No-Vent™ connector does not add dead volume and allows rapid column changes.



502.2 Calibration Mix#1 (gases) cat# 30042

- | | |
|---|---------------------------|
| 1. dichlorodifluoromethane | 5. bromomethane |
| 2. 1,2-dichlorotetrafluoroethene (Freon® 114) | 6. chloroethane |
| 3. chloromethane | 7. trichlorofluoromethane |
| 4. vinyl chloride | |



Column: Rtx®-624 60m, 0.25mm ID, 1.4µm (cat# 10969)

- | | |
|--------------|-----------------------|
| Inj.: | purge & trap |
| GC | Agilent 6890 |
| Inj. temp.: | 300°C |
| Carrier gas: | helium, constant flow |
| Flow rate: | 1.0mL/min. |

- | | |
|----------------------|--------------------|
| Oven temp.: | 60°C |
| Det.: | Agilent 5973 GC/MS |
| Transfer line temp.: | 280°C |
| Scan range: | 35-550 amu |
| Tune | BFB |
| Ionization: | EI |

Description	qty.	cat.#
EZ No-Vent™ Connector Kit for Agilent 5971/5972 and 5973 GC/MS	kit	21323
EZ No-Vent™ Connector Kit for Varian Saturn 2000 Series MSs new!	kit	22423
Replacement ferrules for connecting capillary column to EZ No-Vent™:		
0.4mm ID	2-pk.	21015
0.5mm ID	2-pk.	21016
Replacement ferrules for connecting transfer line to EZ No-Vent™: 0.4mm ID		
	2-pk.	21043
Replacement 100µm deactivated transfer line	3 ft.	21018
Replacement EZ No-Vent™ Column Nut	5-pk.	21900
Replacement EZ No-Vent™ Plug	2-pk.	21915
Open-End Wrenches (1/4" x 5/16")	2-pk.	20110

Each kit includes: EZ No-Vent™ Connector, two 0.4mm ID ferrules for capillary column, two 0.4mm ID ferrules for transfer line, 100µm deactivated transfer line (3 ft.), column plug, column nut.

did you know?

Restek offers many innovative tools and supplies for your MS. Refer to our catalog or website.