

Genuine Restek HPLC Parts and Accessories

The parts and tools you need to keep your HPLC systems running smoothly

By Becky Wittrig, Ph.D., HPLC Products Marketing Manager

- Restek quality and reliability.
- Renowned Restek Plus 1™ service.



Genuine Restek Replacement Parts for ThermoSeparation Products HPLC Systems

Restek offers replacement parts for Agilent, Beckman, Hitachi, PerkinElmer, Shimadzu, Waters, and ThermoSeparation Products HPLC systems—all designed to equal or exceed the performance of original equipment manufacturers' parts. We've listed parts for ThermoSeparation Products HPLC Systems here. For parts for other systems, refer to our catalog, or visit our website. Use Genuine Restek Replacement Parts to keep your system in peak condition!

Description	Model #	Similar to SP/TSP part #	qty.	cat.#
Inlet Check Valve Assembly	SP8800 & P-Series Pumps	A3495-010	ea.	25474
Outlet Check Valve Assembly	SP8800 Series Pumps	A3490-010	ea.	25475
Piston	SP8800 & P-Series Pumps	A3102-010	ea.	25476
Back-up Seal	SP8800 & P-Series Pumps	A2963-010	ea.	25477
Plunger Seal, Gold Superseal	SP8800 & P-Series Pumps	A2962-010	ea.	25478
Check Valve and Transducer Assembly	P-Series Pumps	A3990-010	ea.	25479
Kel-F® Washer	P-Series Pumps	A2973-010	ea.	25480
Rotor Seal Assembly, Rheodyne® 7010	TSP AS100, 300, 1000, 3000, 3500, 8875, and 8880 Autosamplers	7010-039	ea.	25481
Syringe Assembly, 250µL	TSP AS100, 300, 1000, 3000, 3500, 8875, and 8880 Autosamplers	A3588-020	ea.	25482
Syringe, 500µL	TSP AS100, 300, 1000, 3000, 3500, 8875, and 8880 Autosamplers	A3588-010	ea.	25483
Lamp, UV	Linear UV-200, 203, 204, 205, 206, and UV 100, 150, 1000, and 2000 Detectors	9551-0023	ea.	25484

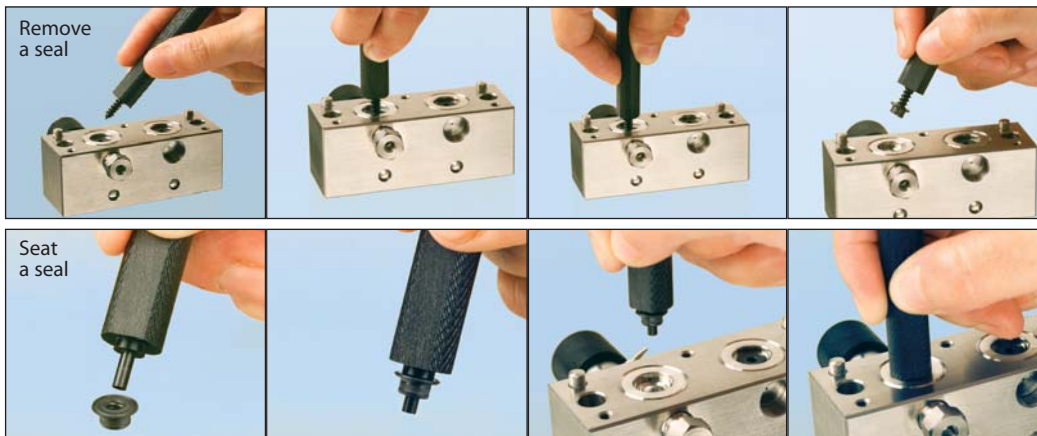
Description	Model #	Similar to TSP part #	qty.	cat.#
Check Valve Cartridge	LDC Constametric Pumps	900946	ea.	25485
Sapphire Plunger	LDC Constametric Pumps	801306	ea.	25486
Plunger Seal Kit, Gold	LDC Constametric Pumps	31-36-00754	ea.	25487
Plunger Seal, Black	LDC Constametric Pumps	206129001	ea.	25488
Plunger Seal, Gold	LDC Constametric Pumps	206156001	ea.	25489
Lamp, Deuterium	LDC SM-I, II, III, 3000, 3100, 3100X, and 4000 Detectors	108035	ea.	25490
Lamp, Deuterium Pre-aligned	LDC 3200 and 4100 Detectors	900918001	ea.	25491

HPLC Piston Seal Insertion Tool

Simplify pump maintenance: use one end to remove your old seal, then simply slip your new seal on the other end and push it flush into position. The tool cannot mar the surrounding metal surface of the pump housing.



Use the flat side of the Piston Seal Insertion Tool to seat a Waters face seal.



Description	qty.	cat.#
HPLC Piston Seal Insertion Tool	ea.	21356

PEEK® Unions, Connectors, and Tubing

Restek offers a wide range of PEEK® and stainless steel unions, connectors, and tubing, for installing and maintaining your HPLC systems. For complete listings, see our current catalog, or visit our website.

PEEK® Union Connector

Allows you to quickly and reliably connect two pieces of 1/16-inch tubing. End fittings included.

Description	qty.	cat.#
PEEK® Union Connector 1/16"	2-pk.	25323

Universal 10-32 PEEK® Column Connectors and Plugs

Universal PEEK® Connectors allow easy installation of all 1/16-inch tubing, including stainless steel.

Description	qty.	cat.#
PEEK® Column Connector (beige, round body)	10-pk.	25015
PEEK® Column Plug (black)	10-pk.	25016
PEEK® Fingertight Fittings (blue, flat-sided)	10-pk.	25324

Inert PEEK® Tubing

- Replaces stainless steel, titanium, Teflon® or Tefzel® tubing.
- Less oxygen permeable and more temperature resistant (to 250°C) than Teflon® or Tefzel® tubing.
- Use with PEEK® fingertight or flangeless fittings.
- Use to 7,000psi.

Description	Color Code	qty.	cat.#
PEEK® Tubing, 1/16" OD x 0.0025" ID x 1m	natural	3-pk.	25320
PEEK® Tubing, 1/16" OD x 0.005" ID x 3m	red stripe	ea.	25065
PEEK® Tubing, 1/16" OD x 0.007" ID x 3m	yellow stripe	ea.	25066
PEEK® Tubing, 1/16" OD x 0.010" ID x 3m	blue stripe	ea.	25067
PEEK® Tubing, 1/16" OD x 0.020" ID x 3m	orange stripe	ea.	25068

HPLC 30-Column Storage Cabinet

Tired of stacks of HPLC columns on your lab benches? This easy-to-install cabinet saves space and protects columns; the hinged door is clear to allow quick identification of column labels or tags.

Description	dimensions	qty.	cat.#
30 Column Cabinet	17 7/8 x 15 x 2 1/8"	ea.	25159

*Please note: Columns in photograph are not included.

Teflon® Tubing

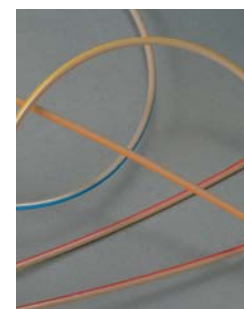
- Ideal for mobile phase inlet lines.
- Chemically inert.
- Use to 500psi and 80°C.

Description	qty.	cat.#
Teflon® Tubing, 1/8" OD x 0.063" ID x 3m (1.6mm ID)	3m	25306
Teflon® Tubing, 1/8" OD x 0.094" ID x 3m (2.4mm ID)	3m	25307

Opti-Cap™ Bottle Top

The most economical way to helium-sparge and deliver HPLC mobile phases. The Opti-Cap™ top fits all standard GL-45 bottles and has two 1/8-inch holes and one 1/16-inch hole for tubing.

Description	qty.	cat.#
Opti-Cap™ (Cap and PEEK® Plug)	ea.	25300
Opti-Cap™ Kit (Opti-Cap™, 3 meters of tubing, sparging filters)	kit	25301
Opti-Cap™ Kit with 1L Bottle	kit	25302
Opti-Cap™ Kit with 2L Bottle	kit	25303
Related items and replacement parts	qty.	cat.#
Mobile Phase Sparge Filter: 2µm, stainless steel	ea.	25311
Mobile Phase Inlet Filter: 10µm	ea.	25312
Teflon® Tubing, 1/8" OD x 0.094" ID x 3m (2.4mm ID)	3m	25307
Teflon® Tubing, 1/8" OD x 0.063" ID x 3m (1.6mm ID)	3m	25306
PEEK® Plug, 1/4"-28 threads	3-pk.	25319
1L Graduated Safety-Coated Bottle – GL-45 threads	ea.	25304
2L Graduated Safety-Coated Bottle – GL-45 threads	ea.	25305



Opti-Cap™ Kit with bottle