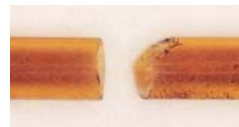


# Cool Tools!

Restek Innovations Save You Time and Money

## A Clean Square Cut...

The key to obtaining a leak-tight seal in a Press-Tight® connector—or in other connecting devices that make a compression seal with the end of the column—is a clean, right angle cut at the end of the column. If you use an unsuitable device to cut your columns, you run the risk of angled cuts or chipped or jagged edges that will not seal effectively, or even crushing the end of the column. We offer a selection of scoring tools that will help you properly cut your columns.



Make a clean, square cut for optimum connector performance. The cut on the right will produce a poor seal.

## Scoring Wafer with Handle

- Ceramic wafer is serrated on one side and straight-edged on the other to cut both fused silica and metal tubing cleanly.
- Unique, ergonomic handle is made of soft, comfortable rubber.



Hold tubing firmly in one hand, allowing about two inches to extend freely. Hold the scoring wafer at a 45° angle to the tubing. Exert just enough pressure to put a slight arc in the tubing. Pull perpendicularly across the tubing.



The tubing should fall off on its own, or it should easily break at the score with a slight tap of the wafer.



Check the cut against the white of the scoring wafer. Look for a clean, square cut.



Make clean, square cuts!

Description	qty.	cat.#
Scoring Wafer with Handle	2-pk.	23015

## Ceramic Scoring Wafers

- Four straight scoring edges for cutting fused silica tubing and four serrated edges for cutting MXT® metal capillary columns.
- Sure-grip handle included.



Exert just enough pressure to put a slight arc in the tubing. The tubing should fall off or break with a slight tap of the wafer.



Check the cut against the white of the scoring wafer. Look for a clean, square cut.



Description	qty.	cat.#
Ceramic Scoring Wafers	5-pk.	20116

## Sapphire Scribe

- Cuts fused silica tubing.
- Produces a clean, square cut.



One quick stroke...



...and tap leaves a clean, square end.



Description	qty.	cat.#
Sapphire Scribe	ea.	20182

## Capillary Column Caps

- Attach to the column in seconds to form an airtight seal.
- Increase column lifetime—prevent moisture and air from entering the column during storage.
- Color-coded for identifying detector and injector ends.
- Not recommended for reuse.

Description	qty.	cat.#
Capillary Column Caps	10-pk.	21044

