

FID Replacement Parts for PerkinElmer Auto SYS™ XL and Clarus 500

- Made of high-quality stainless steel.
- Meet or exceed OEM performance.



Description	Similar to PE part #	qty.	cat.#
FID Jet for PerkinElmer Auto SYS™ XL and Clarus 500	N6100361	ea.	23038
Auto-Ignite FID Replacement Part Kit for PerkinElmer Auto SYS™ XL and Clarus 500	N6103167	kit	23061
	N6103175		
	N6101085		
	N6001204		
Nozzle Insulator for PerkinElmer Auto SYS™ XL and Clarus 500	09912223	ea.	23062
FID Body for PerkinElmer Auto SYS™ XL and Clarus 500	N6101085	ea.	23062
	N6100364	ea.	23063

MLE Capillary Tool Kit for PerkinElmer GCs

Includes:

- 1/8", 3/16", and 1/4" nylon brushes
- 1/4", 3/8", and 3/16" stainless steel wire tube brushes
- stainless steel surface brush
- 6 stainless steel jet reamers (0.25–0.65mm OD)
- 1/4" x 5/16" open end wrench
- 3/8" x 7/16" open end wrench
- 7/16" x 1/2" open end wrench
- 1/2" x 9/16" open end wrench
- rubber-tipped slide-lock tweezers
- scoring wafers with handles
- inlet liner removal tool
- septum puller
- mini wool puller/inserter tool
- 4-inch tapered needle file
- swivel head flashlight
- mini hand drill set
- 15cm compact steel ruler
- pocket magnifier
- high temperature string (1 meter)
- pipe cleaner (12-inch)
- cotton tip swabs (pk. of 25)



Description	qty.	cat.#
MLE Capillary Tool Kit for PerkinElmer GCs	kit	22185

restek
innovation!



Make clean, square cuts!

Scoring Wafer with Handle

- Ceramic wafer is serrated on one side and straight-edged on the other to cut both fused silica and metal tubing cleanly.
- Unique, ergonomic handle is made of soft, comfortable rubber.



Hold tubing firmly in one hand, allowing about two inches to extend freely. Hold the scoring wafer at a 45° angle to the tubing. Exert just enough pressure to put a slight arc in the tubing. Pull perpendicularly across the tubing.



The tubing should fall off on its own, or it should easily break at the score with a slight tap of the wafer.



Check the cut against the white of the scoring wafer. Look for a clean, square cut.

Description	qty.	cat.#
Scoring Wafer with Handle	2-pk.	23015



Ceramic Scoring Wafers

- Four straight scoring edges for cutting fused silica tubing and four serrated edges for cutting MXT® metal capillary columns.
- Sure-grip handle included.



Exert just enough pressure to put a slight arc in the tubing. The tubing should fall off or break with a slight tap of the wafer.



Check the cut against the white of the scoring wafer. Look for a clean, square cut.

Description	qty.	cat.#
Ceramic Scoring Wafers	5-pk.	20116



Sapphire Scribe

- Cuts fused silica tubing.
- Produces a clean, square cut.



One quick stroke...



...and tap leaves a clean, square end.

Description	qty.	cat.#
Sapphire Scribe	ea.	20182



Shortix® Capillary GC Column Cutter

- Consistently make precise, clean, square cuts with a diamond blade.
- Built-in magnifier to verify square cut.
- Use with 0.25mm ID to 0.53mm ID tubing (0.78mm OD maximum).
- Maintenance kit includes diamond cutting wheel, O-rings, and a tool to open the column cutter.



Maintenance Kit for Shortix® Capillary GC Column Cutter

Description	qty.	cat.#
Shortix® Capillary GC Column Cutter	ea.	23026
Maintenance Kit for Shortix® Capillary GC Column Cutter	kit	23027



Capillary Column Caps

- Attach to the column in seconds to form an airtight seal.
- Increase column lifetime—prevent moisture and air from entering the column during storage.
- Color-coded for identifying detector and injector ends.
- Not recommended for reuse.

Description	qty.	cat.#
Capillary Column Caps	10-pk.	21044



Flashlight with Swivel Head

- Ideal for tight spaces—like inside a GC oven.
- Uses two AA batteries (included).

Description	qty.	cat.#
Flashlight with Swivel Head	ea.	22187

Septum Puller

- Keep several on hand in your laboratory—can be used in many different ways.
- Use hooked end for removing septa and O-rings; pointed end works well for removing stuck ferrules or fragments.



Remove septum without damaging an expensive weldment.



Dislodge a stuck ferrule quickly and easily—without scoring the fitting.



Description	qty.	cat.#
Septum Puller	ea.	20117

Slide-Lock Tweezers and 15cm Compact Steel Ruler

- “Lock” capillary columns to the correct insertion distance recommended by the instrument manufacturer during installation.
- Useful for many laboratory tasks.



Description	qty.	cat.#
Slide-Lock Tweezers and 15cm Compact Steel Ruler	set	20101

High-Temperature String

- Withstands temperatures to 400°C.
- Use to restring capillary columns, attach column connectors to column cages, or hold a column in the GC oven.



Description	qty.	cat.#
High-Temperature String	10m	20109
High-Temperature String	450m	20618

Stainless Steel Jet Reamers

A great tool for cleaning detector jets and other small orifices. Serrated design is optimal for removing silica deposits and other contaminants.



Description	qty.	cat.#
Stainless Steel Jet Reamers	6-piece set	20113

Stainless Steel Tube Brushes/Surface Brush

Unlike brass brushes that can leave a metal residue, these stainless steel tube brushes (³/₈-, ³/₁₆-, and ¹/₄-inch) work well for cleaning dirty collectors, injector ports, and detector ports. The surface brush can be used to remove residue that builds up on metal detector jets and electronic contacts.



Description	qty.	cat.#
Stainless Steel Tube Brushes/Surface Brush	4-piece set	20112

Open-End Wrench Set

High-quality ¹/₄" x ⁵/₁₆", ³/₈" x ⁷/₁₆", ⁷/₁₆" x ¹/₂", and ¹/₂" x ⁹/₁₆" wrenches for tightening a wide variety of chromatograph and other fittings.



Description	qty.	cat.#
Open-End Wrench Set	set	20387

Open-End Wrenches

High-quality wrenches for tightening capillary fittings.



Description	qty.	cat.#
Open-End Wrenches (¹ / ₄ " x ⁵ / ₁₆ ")	2-pk.	20110
Open-End Wrenches (³ / ₈ " x ⁷ / ₁₆ ")	2-pk.	22455

Pocket Magnifier

- Small and easy to handle.
- 10X magnification makes it easy to see the column end to verify a square cut.



Description	qty.	cat.#
Pocket Magnifier	ea.	20124

Vespel® Ferrules

- 100% high-temperature polyimide.
- Stable to 350°C.
- Durable, leak-tight.



Vespel® ferrules

Graphite Ferrules

- Pre-conditioned to eliminate out-gassing.
- High-purity, high-density graphite.
- Smoother surface and cleaner edges than conventional graphite ferrules.
- Contain no binders that can off-gas or adsorb analytes.
- Stable to 450°C.

Vespel®/Graphite Ferrules

- 60%/40% Vespel®/graphite blend, offering the best combination of sealing and ease of workability.
- Seal with minimal torque, reusable, and preferred for vacuum and high-pressure uses.
- Stable to 400°C.
- Recommended for mass spec transfer lines.

Capillary Ferrules—For 1/16-Inch Compression-Type Fittings

Ferrule ID	Fits Column ID	qty.	Vespel®	Graphite	Vespel®/Graphite
0.3mm	< 0.18mm	10-pk.	22213	20233	20275
0.4mm	0.18/0.25/0.28mm	10-pk.	22214	20200	20211
0.4mm	0.18/0.25/0.28mm	50-pk.	—	20227	20229
0.5mm	0.32mm	10-pk.	22215	20201	20212
0.5mm	0.32mm	50-pk.	—	20228	20231
0.6mm	0.28mm**	10-pk.	—	—	20232
0.8mm	0.45/0.53mm	10-pk.	22216	20202	20213
0.8mm	0.45/0.53mm	50-pk.	—	20224	20230
1.0mm	0.75mm*	10-pk.	22217	21058	24912
1.2mm	0.75mm	10-pk.	22218	—	—
1.6mm	1.00mm*	10-pk.	—	21060	—

*For micropacked columns.
 **For 0.28mm MXT® columns.



Encapsulated Ferrules—For 1/16-Inch Compression Fittings

- Reusable—will not deform and stick in fittings.
- Less torque needed to seal ferrule.
- Restek’s unique blend of graphite minimizes fragmentation and outgassing.



Reusable!

Ferrule ID	Fits Column ID	qty.	cat.#
0.4mm	0.25mm	10-pk.	21036
0.5mm	0.32mm	10-pk.	21037
0.8mm	0.53mm	10-pk.	21038

Standard Ferrules—For 1/16-, 1/8-, and 1/4-Inch Fittings

Fitting Size	Ferrule ID	qty.	Vespel®	Graphite	Vespel®/Graphite
1/4"	3/16"	5-pk.	—	—	20258
1/16"	1/16"	10-pk.	22210	20207	20218
1/8"	1/8"	10-pk.	22211	20208	20219
1/8"	reduce to 1/16"	10-pk.	—	20209	20220
1/4"	1/4"	10-pk.	22212	20210	20221
1/4"	reduce to 1/8"	10-pk.	22219	20225	20222
1/4"	reduce to 1/16"	10-pk.	—	20226	20223



Two-Hole Ferrules—For 1/8-Inch and 1/16-Inch Compression-Type Fittings

Fitting Size	Ferrule ID	Fits Column ID	qty.	Vespel®/Graphite
1/16"	0.4mm	0.25/0.28mm	5-pk.	20241
1/16"	0.5mm	0.32mm	5-pk.	20242
1/8"	0.8mm	0.45/0.53mm	5-pk.	20246



Reducing Ferrules

Fitting Size	Ferrule ID	Fits Column ID	qty.	Graphite	Vespel®/Graphite
1/8"	0.4mm	0.25mm	5-pk.	20205	20254
1/8"	0.5mm	0.32mm	5-pk.	20205	20255
1/8"	0.8mm	0.53mm	5-pk.	20206	20215
1/4"	0.4mm	0.25mm	5-pk.	20203	—
1/4"	0.5mm	0.32mm	5-pk.	20203	20257
1/4"	0.8mm	0.45/0.53mm	5-pk.	20204	20217



Blank Ferrules—For 1/16-Inch Fittings

Fitting Size	Ferrule ID	qty.	Vespel®/Graphite
1/16"	no hole	10-pk.	20240



Alumaseal™ Ferrules*

- No more ferrule fragments in the transfer line; aluminum construction—will not crack or fragment.
- No retightening required after temperature cycles—excellent for GC/MS.
- Eliminate out-gassing, make leak-tight seals, for less detector noise.
- Unique two-piece design permanently locks on fused silica tubing without causing breakage.
- Will not stick in fittings, unlike Vespel® or graphite.
- Stable to 550°C.
- Use with any 1/16" compression-type fitting.

Ferrule ID	Fits Column ID	qty.	cat.#
0.4mm	0.25mm	10-pk.	21472
0.5mm	0.32mm	10-pk.	21473
0.8mm	0.53mm	10-pk.	21474

*Patent pending.



Teflon® Ferrules

- Upper temperature limit 250°C.
- 100% Teflon®; completely inert.
- One-piece design requires no back ferrule.

Fitting Size	Ferrule ID	qty.	cat.#
1/16"	1/16"	10-pk.	21122
1/16"	0.4mm	10-pk.	21123
1/16"	0.5mm	10-pk.	21124
1/16"	0.8mm	10-pk.	21125
1/8"	1/8"	10-pk.	21126
3/16"	3/16"	10-pk.	21127
1/4"	1/4"	10-pk.	21128



tech tip

Choosing the Right Ferrule

Although graphite and Vespel®/graphite ferrules each have advantages and disadvantages, the choice of ferrule composition is largely a personal preference.

Graphite ferrules are soft, easy to seal, stable to 450°C, and contain no binders that might off-gas.

Vespel®/graphite ferrules work better for vacuum and high-pressure applications (e.g., GC/MS) because they will not fragment or allow oxygen to permeate into the system, whereas graphite ferrules will. Because Vespel®/graphite ferrules are made from a harder material, they might require retightening after several temperature cycles.

Alumaseal™ ferrules are ideal for GC/MS. They will not crack or fragment and require no retightening after temperature cycles.

Vu2 Union™ Column Connectors



Patent pending.

Secure, reliable column-to-column connections!

Vu2 Union™ Connectors

- Connect a guard column to an analytical column.
- Connect a column to a transfer line.
- Connect two columns in series.
- Repair a broken column.

Restek's Vu2 Union™ connector combines the simplicity of a Press-Tight® union with the strength of a metal union. The Vu2 Union™ connector reliably couples one analytical column to another, or to a transfer line or guard column. The columns cannot unexpectedly disconnect, even at temperatures as high as 400°C.

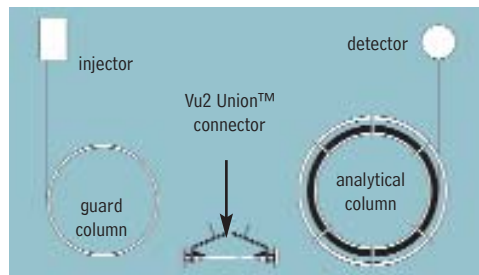
How does a Vu2 Union™ connector work?

A Press-Tight® union in the Vu2 Union™ connector joins the fused silica ends together; the ferrule and knurled nut at each end of the connector hold the tubing in place via a secondary seal between the ferrule and the Press-Tight® union. Each knurled nut applies independent pressure to each ferrule, to make a leak-tight seal with the column end. These ultra-strong connections will not unexpectedly disconnect under temperature changes, vibrations, or other stresses normally encountered in GC analyses. The open design allows visual confirmation of the seal between the column and the Press-Tight® union, to ensure confidence in the connection. Hang the connector from the column cage, to minimize stress on the connections.

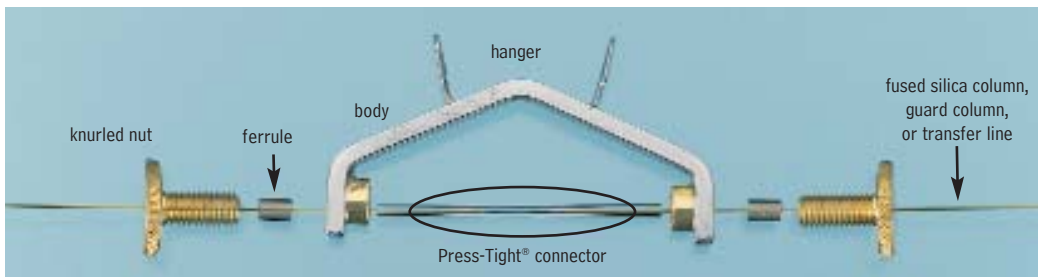
Who will benefit from using Vu2 Union™ connectors?

Any analyst using guard columns, transfer lines, or restrictor tubing, performing a dual-column analysis with columns connected in series, or seeking to repair a broken column will find Vu2 Union™ connectors the simple, reliable, easy-to-use solution to their connection needs.

A guard column connected to an analytical column by a Vu2 Union™ connector.



The Vu2 Union™ connector's open design allows visual confirmation of the seal; secondary seals ensure a leak-tight connection.



NOTE: Not recommended for GC column-to-MS connections—use the Vacuum Vu-Union® (see our general catalog or website).

Kits include: Vu2 Union™ body, 2 knurled nuts, 2 Press-Tight® unions, and 4 ferrules

Description	Ferrules Fit Column ID	qty.	cat.#
Vu2 Union™ Connector Kit	0.10/0.15mm	kit	22220
Vu2 Union™ Connector Kit	0.18/0.28mm	kit	21105
Vu2 Union™ Connector Kit	0.32mm	kit	21106
Vu2 Union™ Connector Kit	0.45/0.53mm	kit	21107
Knurled nut		2-pk.	21108



Universal Press-Tight® Connectors

Description	5-pk.	25-pk.	100-pk.
Universal Press-Tight® Connectors	20400	20401	20402
Deactivated, Universal Press-Tight® Connectors	20429	20430	20431
Siltek® Treated Universal Press-Tight® Connectors	20480	20449	20481

Graphite Ferrules for Vu2 Union™ Connectors

- High-purity, high-density graphite.
- Stable to 450°C.
- No binders that can off-gas or adsorb analytes.
- Smooth surface and clean edges.



Ferrule ID	Fits Column ID	Graphite 2-pk.	Graphite 10-pk.
0.3mm	0.10/0.15mm	22221	22222
0.4mm	0.18/0.28mm	20280	20281
0.5mm	0.32mm	20282	20283
0.8mm	0.45/0.53mm	20284	20285

restek
innovation!

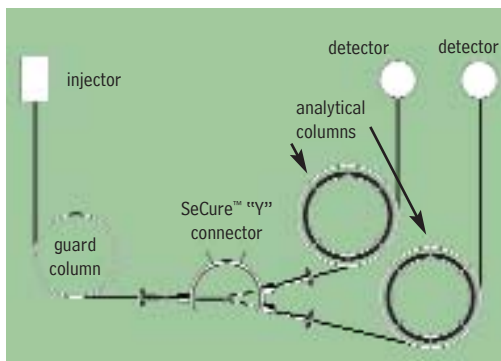
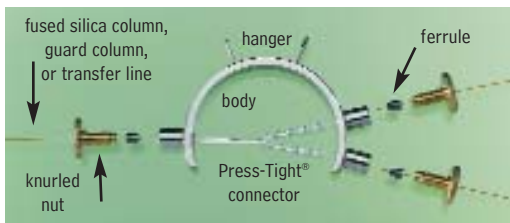
SeCure™ "Y" Connector Kits

- Connect two analytical columns to a transfer line or guard column.
- Use standard "Y" Press-Tight® connectors and 1/16" graphite ferrules.
- Reliable seal integrity, will not unexpectedly disconnect during temperature-programmed analyses.
- Open design allows visual confirmation of the seal for added confidence in the connection.

Combine the simplicity of a "Y" Press-Tight® connector with the strength of a metal union. The ferrules and knurled nuts hold the fused silica tubing in place, which prevents the tubing from unexpectedly disconnecting, even at temperatures as high as 400°C.

The SeCure™ "Y" Connector's open design allows visual confirmation of the seal.

Dual-column confirmational analysis with a single injection—one of the SeCure™ "Y" connector's many uses.



Patent pending.

Secure, reliable column-to-column connections!

a plus 1 story

"Restek is a great corp. that keeps us operating on a daily basis with your GC supplies. We really love the new SeCure™ "Y" Connector. It has worked wonders for us."

Eric A. Lorge, Project Manager, Major Equipment Manufacturer, Environmental Lab

Kits include: SeCure™ "Y" connector body, 3 knurled nuts, "Y" Universal Press-Tight® union, 3 ferrules.

Description	Ferrules Fit Column ID	qty.	cat.#
SeCure™ "Y" Connector Kit	0.18/0.25/0.28mm	kit	20276
SeCure™ "Y" Connector Kit	0.32mm	kit	20277
SeCure™ "Y" Connector Kit	0.45/0.53mm	kit	20278
Knurled nut		3-pk.	20279

Universal "Y" Press-Tight® Connectors

- Split sample flow onto two columns.
- Split a single column flow to two detectors—perform confirmation analysis with a single injection.
- Deactivated Press-Tight® connectors assure better recovery of polar and non-polar compounds.
- Siltek® treated connectors are ideal for organochlorine pesticides analysis.
- Fit column ODs from 0.33–0.74mm (Restek 0.1mm–0.53mm ID).

Description	ea.	3-pk.
Universal "Y" Press-Tight® Connector	20405	20406
Deactivated Universal "Y" Press-Tight® Connector	20405-261	20406-261
Siltek® Treated Universal "Y" Press-Tight® Connector	20485	20486

Graphite Ferrules for SeCure™ "Y" Connectors

- Preconditioned to minimize out-gassing.
- High-purity, high-density graphite.
- Stable to 450°C.
- No binders that can off-gas or adsorb analytes.
- Smooth surface and clean edges.

Ferrule ID	Fits Column ID	Graphite 10-pk.	Graphite 50-pk.
0.4mm	0.18/0.25/0.28mm	20200	20227
0.5mm	0.32mm	20201	20228
0.8mm	0.45/0.53mm	20202	20224





Universal Press-Tight® Connectors

- Connect a guard column to an analytical column.
- Repair a broken column.
- Connect a column outlet to a transfer line.
- Deactivated Press-Tight® connectors assure better recovery of polar and non-polar compounds.
- Siltek® treated connectors are ideal for organochlorine pesticides analysis.
- Fit column ODs from 0.33–0.74mm (Restek 0.1mm–0.53mm ID).

Description	5-pk.	25-pk.	100-pk.
Universal Press-Tight® Connectors	20400	20401	20402
Deactivated, Universal Press-Tight® Connectors	20429	20430	20431
Siltek® Treated Universal Press-Tight® Connectors	20480	20449	20481

Universal Angled Press-Tight® Connectors

- Ideal for connecting a guard column to an analytical column.
- Made from inert fused silica.
- Angle approximates the curvature of a capillary column, reduces strain on column-end connections.
- Deactivated Press-Tight® connectors assure better recovery of polar and non-polar compounds.
- Siltek® treated connectors are ideal for organochlorine pesticides analysis.
- Fit column ODs from 0.33–0.74mm (Restek 0.1mm–0.53mm ID).



Description	5-pk.	25-pk.	100-pk.
Universal Angled Press-Tight® Connectors	20446	20447	20448
Deactivated Universal Angled Press-Tight® Connectors	20446-261	20447-261	20448-261
Siltek® Treated Universal Angled Press-Tight® Connectors	20482	20483	20484

Universal “Y” Press-Tight® Connectors

An alternative method of performing dual-column confirmational analyses!

- Split sample flow onto two columns.
- Split a single column flow to two detectors—perform confirmation analysis with a single injection.
- Deactivated Press-Tight® connectors assure better recovery of polar and non-polar compounds.
- Siltek® treated connectors are ideal for organochlorine pesticides analysis.
- Fit column ODs from 0.33–0.74mm (Restek 0.1mm–0.53mm ID).



Description	ea.	3-pk.
Universal “Y” Press-Tight® Connector	20405	20406
Deactivated Universal “Y” Press-Tight® Connector	20405-261	20406-261
Siltek® Treated Universal “Y” Press-Tight® Connector	20485	20486

Universal Angled “Y” Press-Tight® Connectors

- Perform confirmation analysis with a single injection.
- Made from inert fused silica.
- Inlet and outlet ends conform to the column curvature—alleviates column-end connection strain.
- Deactivated Press-Tight® connectors assure better recovery of polar and non-polar compounds.
- Siltek® treated connectors are ideal for organochlorine pesticides analysis.
- Fit column ODs from 0.33–0.74mm (Restek 0.1mm–0.53mm ID).



Description	ea.	3-pk.
Universal Angled “Y” Press-Tight® Connector	20403	20404
Deactivated Universal Angled “Y” Press-Tight® Connector	20403-261	20404-261
Siltek® Treated Universal Angled “Y” Press-Tight® Connector	20487	20469

Universal “X” Press-Tight® Connectors

- Connect a column to three detectors.
- Connect a column to two detectors and a sniffer port.
- Split sample flow onto three columns.
- Deactivated Press-Tight® connectors assure better recovery of polar and non-polar compounds.
- Fit column ODs from 0.33–0.74mm (Restek 0.1mm–0.53mm ID).



Description	ea.	3-pk.
Universal “X” Press-Tight® Connector	20407	20408
Deactivated Universal “X” Press-Tight® Connector	20407-261	20408-261
Siltek® Treated Universal “X” Press-Tight® Connector	20407-266	20408-266



Polyimide Resin

- Permanently connects a Press-Tight® connector to a fused silica column.

Description	Max. Temp.	qty.	cat.#
Polyimide Resin	350°C	5 grams	20445

MXT™-Union Connector Kits for Fused Silica Columns

- Low-dead-volume, leak-tight connection.
- Reusable.
- Siltek® treatment ensures maximum inertness.
- Ideal for connecting a guard column or transfer line to an analytical column.
- Use to oven temperatures of 350°C.
- Available in union and “Y” configurations.

These MXT™ connectors can be used with fused silica tubing, because of a Valcon polyimide 1/32-inch one-piece fused silica adaptor. This unique graphite-reinforced composite allows a capillary column to slide into the adaptor and be locked in place simply by loosening and tightening the fitting.

MXT™-Union Connector Kits for Fused Silica Columns

Each kit contains the MXT™ union, two 1/32-inch nuts and two one-piece fused silica adaptors.

Description	qty.	cat.#
For 0.25mm ID Fused Silica Columns	kit	21386
For 0.32mm ID Fused Silica Columns	kit	21385
For 0.53mm ID Fused Silica Columns	kit	21384



MXT™ “Y”-Union Connector Kits for Fused Silica Columns

Each kit contains the MXT™ union, three 1/32-inch nuts and three one-piece fused silica adaptors.

Description	qty.	cat.#
For 0.25mm ID Fused Silica Columns	kit	21389
For 0.32mm ID Fused Silica Columns	kit	21388
For 0.53mm ID Fused Silica Columns	kit	21387



1/32-Inch Replacement Nut

Description	qty.	cat.#
1/32" Replacement Nut	5-pk.	20389



Valco® Connectors—One-Piece Valcon Polyimide Adaptor Ferrule for Fused Silica

We recommend a one-piece adaptor ferrule for use in fittings in which the ferrule will not be removed. Connections are made or broken by tightening or loosening the fitting nut and sliding the tubing in or out. Fused silica adaptor ferrules are Valcon polyimide, a unique graphite-reinforced composite, specially prepared to maximize mechanical stability at temperatures to 350°C. The determining factor for selecting adaptor ferrule size is the fused silica tubing OD.

1/32-Inch Adaptor Ferrule (Valcon Polyimide)

Tubing OD	Tubing ID	Valco® #	qty.	cat.#
0.25 ≤ 0.40mm	0.25mm	FS.4-5	5-pk.	20137
0.40 ≤ 0.50mm	0.32mm	FS.5-5	5-pk.	20140
0.50 ≤ 0.80mm	0.53mm	ZF.5V-5	5-pk.	20141
1/32" Replacement Nut			5-pk.	20389



Ferrule Removal Kit

The tapered tools in this kit have teeth designed to grip and remove fused silica adaptor ferrules that have become stuck in the fitting detail. Each kit has two tools: one for removing 1/32-inch adaptor ferrules and one for removing 1/16-inch adaptor ferrules.



Description	Valco® #	qty.	cat.#
Ferrule Removal Kit	FRK1	kit	20146



Super-Clean™ Gas Filters

- High-purity output ensures 99.9999% pure gas.
- “Quick connect” fittings for easy, leak-tight cartridge changes.
- Glass inside to prevent diffusion; plastic outside for safety.

Designed for fast, simple cartridge changing

Cartridge systems make changing gas filters quick and easy, and Super-Clean™ gas filters are the latest in cartridge-style gas filtration. A baseplate allows cartridges to be exchanged without introducing oxygen. Spring-loaded check valves seal when a filter is removed and open only when a new filter has been locked in place. There is no longer a need for loosening and tightening fittings every time a trap is changed, and your system will not become contaminated during the process.

With available 2- or 3-position baseplates, you can purify all GC gas streams at one location. Figure 1 shows some possible filter cartridge combinations using these baseplates. Any combination is possible because any Restek Super-Clean™ filter cartridge can be used with any Restek baseplate.

High-purity output for improved sensitivity (Table I)

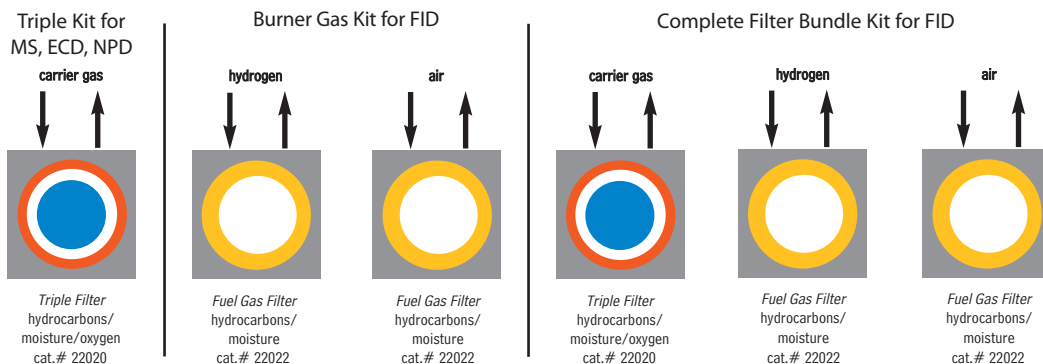
The Triple Filter cartridge (cat.# 22020) is ideal for purifying carrier gas. This trap contains oxygen, moisture, and hydrocarbon scrubbers in one cartridge. The purity of your carrier gas after flowing through the Triple Filter is better than six-9s (99.9999% pure), which is ideal for sensitive mass spectrometry (MS) or ECD analyses, and for protecting your analytical columns against damage from contaminated carrier gas.

The Fuel Gas Filter cartridge (cat.# 22022) is perfect for purifying flame ionization detector (FID) fuel gases, removing both moisture and hydrocarbons. Using the Fuel Gas Filter for FID hydrogen and air will produce a stable baseline, improving overall reproducibility and sensitivity.

did you know?

All Super-Clean™ filter cartridges (except hydrocarbon filter cat.# 22030) feature easy-to-read indicators. The indicator code is shown on every trap so there is no confusion about when to replace it.

Figure 1 Filter cartridges can be configured for different applications.



tech tip

Oxygen and Moisture Traps

We highly recommend oxygen and moisture traps for make-up gas when operating sensitive detectors such as electron capture detectors (ECD). The hydrogen reaction gas for sensitive electrolytic conductivity detectors (ELCD) also requires a hydrocarbon trap, to remove trace impurities.

Table I Each Super-Clean™ filter provides high-purity outlet gas.

Type of Filter	Outlet Gas Quality (%)	Maximum Pressure/ Maximum Flow Rates	Use for:	Indicator Color Change	Capacity			Estimated Lifetime (years)
					H ₂ O (g)	O ₂ (mL)	Hydrocarbons (g)	
Moisture cat.# 22028	>99.9999	11 bar 159psi/ 7 L/min.	Inert carrier gas Air Hydrogen	Yellow to clear	7.2	—	—	>2
Oxygen cat.# 22029	>99.9999	11 bar 159psi/ 7 L/min.	Inert carrier gas	Green to grey	NA	1000	—	>2
Hydrocarbons cat.# 22030	>99.9999	11 bar 159psi/ 7L/min.	Inert carrier gas Air Hydrogen	No indicator	NA	—	12 ³	>2
Fuel Gas ¹ cat.# 22022	>99.9999	11 bar 159psi/ 7L/min.	Inert carrier gas Air Hydrogen	Yellow to clear	3.5	—	24 ³	>1.5
Triple ² cat.# 22020	>99.9999	11 bar 159psi/ 7L/min.	Inert carrier gas	Yellow to clear Green to grey	1.8	500	4 ³	>1
Helium Specific ² cat.# 21982	>99.9999	11 bar 159psi/ 7L/min.	Helium	Yellow to clear Green to grey	1.8	500	—	>1

¹Removes hydrocarbons, moisture.

²Removes hydrocarbons, moisture, oxygen.

³As *n*-butane.