

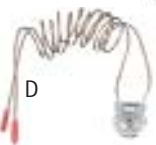
B



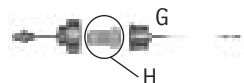
C



D



E



I



Direct Replacement and Siltek® Treated Split/Splitless Injection Ports for Agilent GCs

Would you like better performance from your injector? Our Siltek® treated split/splitless injector is a direct replacement for Agilent 5890 and 6890/6850 GCs, but Siltek® treatment passivates the metal surface to ensure an inert pathway for the sample, delivering increased performance. The injector is manufactured from high-quality stainless steel and meets or exceeds Agilent original equipment performance.

Direct Replacement and Siltek® Treated Split/Splitless Injection Port for Agilent 5890 GCs

Description	Similar to		
	Agilent part #	qty.	cat.#
A) Replacement Weldment*	19251-60575	ea.	20265
Siltek® Weldment**	19251-60575	ea.	20267
B) Replacement Shell Weldment	19251-80570	ea.	20266
Siltek® Shell Weldment**	19251-80570	ea.	20268
O-rings for Agilent Trap Fittings	5180-4181	25-pk.	22064

Direct Replacement and Siltek® Treated Split/Splitless Injection Port for Agilent 6890/6850 GCs

Description	Similar to		
	Agilent part #	qty.	cat.#
C) Replacement Weldment with EPC	G1544-60575	ea.	22674
Siltek® Weldment with EPC**	G1544-60575	ea.	22672
D) Replacement Weldment*	19251-60575	ea.	20265
Siltek® Weldment**	19251-60575	ea.	20267
E) Replacement Shell Weldment	G1544-80570	ea.	22673
Siltek® Shell Weldment**	G1544-80570	ea.	22671
F) Optional Split/Splitless Weldment (for use with large canister type filter)	G1544-60585	ea.	22686
Siltek® Optional Split/Splitless Weldment** (for use with large canister type filter)	G1544-60585	ea.	22670

*For use with manual flow or EPC on Agilent 5890 GCs. For use with manual flow only on Agilent 6890/6850 GCs.

**Treated with Restek's exclusive Siltek® treatment for increased inertness.

Replacement Chemical Traps for Agilent GCs

- Easy to install.
- Attach to same fittings as original equipment.
- Built-in frits retain fine particles; adsorbents remove both moisture and hydrocarbons.

Description	Similar to		
	Agilent part #	qty.	cat.#
G) Optional Split Vent Trap Assembly for Agilent 6890/6850 GCs	G1544-60610	kit	23031
H) Replacement Traps (2) and O-rings (4)	G1544-80530	kit	23032

Injection Port Weldments for Agilent GCs for use with Purge and Trap Systems

Easily attach your purge and trap with pre-installed low dead volume fittings.

For Agilent GCs with Tekmar Purge and Trap Systems

Description	qty.	cat.#
I) Weldment for Agilent 6890 GCs	ea.	22664
Weldment for Agilent 6890 GCs with optional canister filter	ea.	22668
Weldment for Agilent 5890 GCs	ea.	22666

For Agilent GCs with OI Purge and Trap Systems

Description	qty.	cat.#
J) Weldment for Agilent 6890 GCs	ea.	22665
Weldment for Agilent 6890 GCs with optional canister filter	ea.	22669
Weldment for Agilent 5890 GCs	ea.	22667

tech tip

Installing a New Weldment

To eliminate possible leaks and damage to the weldment, always replace the split vent line, nut, and ferrule when installing a new shell weldment.

EPC Test Kit for Agilent 6890 GCs

- Kit includes 3 O-rings, 2 plugs, 1 mounting screw and 1 test block.

Description	Similar to Agilent part #	qty.	cat.#
EPC Test Kit for Agilent 6890 GCs	G1530-60960*	kit	24323

*Similar to, but not exact equivalent. Kits differ in parts.



Heater Cartridge & PRT Sensor for Agilent 5890 GCs

- Use with 5890 FID and split/splitless weldments.
- Meets or exceeds OEM performance.

Description	Similar to Agilent part #	qty.	cat.#
A + B) Injector/FID Heater + Injector/FID PRT Sensor	05890-61140	ea.	22068
A) Injector/FID Heater	19231-60620	ea.	22069
B) Injector/FID PRT Sensor	19231-60660	ea.	23035



Heat Sink for Agilent 5890 GC Split/Splitless Injector

- Meets or exceeds OEM performance.

Description	Similar to Agilent part #	qty.	cat.#
Heat Sink for Agilent 5890 GCs	18740-20940	ea.	20409



Heater Block Retaining Nuts for Agilent GC Split/Splitless Injectors

- Aluminum construction.
- Meet or exceed OEM performance.

Description	Similar to Agilent part #	qty.	cat.#
Heater Block Retaining Nut for Agilent 5890 GCs	19251-20620	ea.	22080
Heater Block Retaining Nut for Agilent 6890/6850 GCs	G1544-20590	ea.	23042



Oven Temp Sensor Assembly

Description	Similar to Agilent part #	qty.	cat.#
A) Oven Temp Sensor for Agilent 5890 GC	05890-61030	ea.	23040
B) Oven Temp Sensor for Agilent 6890 GC	G1530-61030	ea.	23039



60psig Backpressure Regulator Kit

Increase the versatility of your Agilent 5890/6890 GC by replacing the existing 30psig backpressure regulator and gauge with our 60psig regulator. Enables you to use longer 60m and 105m columns as well as shorter 10-meter columns. Includes complete instructions.

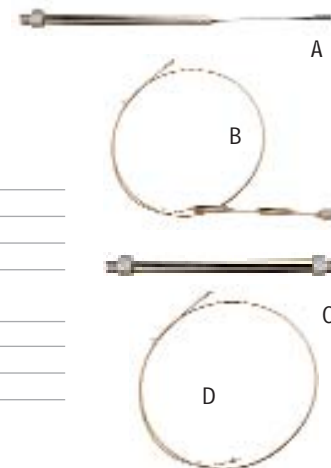
Description	Similar to Agilent part #	qty.	cat.#
Backpressure Regulator Kit	19246-60630	kit	20634



Replacement Chemical Traps for Agilent GCs

- Easy to install.
- Attach to same fittings as original equipment.
- Built-in frits retain fine particles; adsorbents remove both moisture and hydrocarbons.

Description	Similar to Agilent part #	qty.	cat.#
A) Replacement Chemical Trap for Agilent 6890/6850 GCs	G1544-80550	ea.	22820
B) Replacement Chemical Trap for Agilent 5890 GCs	05890-61260	ea.	21610
C) Replacement Chemical Trap for Agilent 5880 GCs	19362-60500	ea.	21158
D) Split Vent Line for Agilent GCs (32-inch) (Includes all installation hardware.)	19251-80525 G1544-20620	2-pk.	22800
E) O-rings for Agilent Trap Fittings	5180-4181	25-pk.	22064
F) Optional Split Vent Trap Assembly for Agilent 6890/6850 GCs	G1544-60610	kit	23031
G) Replacement Traps (2) and O-rings (4)	G1544-80530	kit	23032





Dual-Column *mini-Lam*™ Direct Injection Tee

(for 1/4-inch packed column inlets)

The inverted cup design offers complete sample vaporization and permits larger sample volumes. It incorporates a Press-Tight® taper in each outlet leg, to make a perfect, dead-volume-free connection to each analytical column (ODs ranging from 0.4 to 0.8mm). Allows visual confirmation of the column connection. The open-top design makes it easy to pack with glass wool, keeping sample residue from contaminating the cup.

Description	qty.	cat.#
<i>mini-Lam</i> ™ DI Tee Kit (Includes all fittings and ferrules)	kit	20436
Replacement 4mm <i>mini-Lam</i> ™ DI Tee	ea.	20435

Low-Volume Injector for Agilent Split/Splitless Injectors

- Attaches to the GC inlet without cutting existing injection port lines.
- Allows injections from a syringe onto the column for purge & trap troubleshooting or calibration.
- Siltek® treatment eliminates adsorption of active compounds.

Our low-volume injector can be installed in a matter of minutes. Remove the septum nut or splitless weldment and insert the Restek low-volume injector through the split injector. Tighten the base nut and you're ready! Includes a 1/16-inch nut, a 1/16-inch ferrule, a base nut and 1/4-inch Vespel®/graphite ferrule, a 1/16-inch capillary nut, a 5-pack of low-bleed plug septa, and a low-mass septum nut. Order appropriate capillary ferrules separately.



Description	qty.	cat.#
Low-Volume Injector for Agilent Split/Splitless Injectors	kit	21692

Siltek® Septum Packed Purge Port Weldment for Agilent 5890 GCs

Siltek® treatment eliminates adsorption of sensitive compounds (e.g., DDT and endrin). Order Viton® O-rings (below) and appropriate septa (page 9) separately.



Description	Similar to Agilent part #	qty.	cat.#
Siltek® Septum Packed Purge Port Weldment for Agilent 5890 GCs	19243-80570	ea.	21691
Viton® Replacement O-rings	5080-8898	10-pk.	21685

tech tip

Minimizing Injector Discrimination

When an injected sample is not completely vaporized, lower percentages of compounds that are less volatile (i.e., compounds with high boiling points or high molecular weights) are transferred into the analytical column. As a result, these later-eluting compounds will have progressively decreased peak areas. You can minimize injector discrimination by reducing injector flows, increasing the injector temperature, using pressure pulse injection or a fast autosampler, or using an injector liner that aids in vaporization (e.g., a laminar cup splitter or a liner packed with wool).

Direct Injection (DI) Inserts and Liner Adaptor for 1/4-Inch Packed Column Injection Ports (for 0.25, 0.32, & 0.53mm ID columns)

DI Glass Inserts for Agilent 5890 Packed Column GC

- Tolerances closely controlled.
- Can be removed from the septum nut weldment.



Description	Similar to Agilent part #	qty.	cat.#
DI Glass Inserts for Agilent 5890 Packed Column GC (1.7mm ID x 3.0mm OD x 93mm)	5181-3382 5080-8732	5-pk.	20967

All liners are
100%
deactivated

All liners are shipped
intermediate polarity (IP)
deactivated unless otherwise
requested.

SILTEK[®]
version available.

DI Uniliner[®] Liners for Agilent 5890 Packed Column GC

- Press-Tight[®] taper forms dead-volume-free connection to column.
- Minimizes solvent and peak tailing.
- Use with 0.25, 0.32, and 0.53mm ID capillary columns.
- Can be removed from the septum nut weldment.



Description	Fits same liner adaptor as Agilent part #	qty.	cat.#
DI Uniliner [®] Liner for Agilent 5890 Packed Column GC (1.7mm ID x 3.0mm OD x 93mm)	5181-3382 5080-8732	ea.	20964
DI Uniliner [®] Liners for Agilent 5890 Packed Column GC (1.7mm ID x 3.0mm OD x 93mm)	5181-3382 5080-8732	5-pk.	20965
DI Uniliner [®] Liners for Agilent 5890 Packed Column GC (1.7mm ID x 3.0mm OD x 93mm)	5181-3382 5080-8732	25-pk.	20966

DI Liner Adaptor for Agilent 5890 Packed Column GC

- Uses standard 1/16-inch capillary nut and ferrules.
- Convenient wrench pad at base.
- Includes 1/4-inch graphite ferrule and stainless steel nut.
- Use with Agilent or Restek DI glass inserts or Restek DI Uniliner[®] liners for an Agilent 5890 packed column GC.

Description	Similar to Agilent part #	qty.	cat.#
DI Liner Adaptor for Agilent 5890 Packed Column GC	19244-80540	ea.	21303





For use with 0.25/0.32mm ID columns.

1/16-Inch Capillary Inlet Adaptor Fitting Kit
(Split/splitless fitting for 0.25 or 0.32mm ID capillary columns)

We have specially engineered a high-precision, 1/16-inch split/splitless fitting that accepts standard, two-hole capillary ferrules. Our design makes it easier to install capillary columns because the nut protrudes farther from the insulated injection port chamber. The column insertion depth is the same as the original equipment.

Kit includes adaptor fitting, capillary nut, stainless steel inlet seal, washer, and one 0.4mm ID ferrule.

Description	qty.	cat.#
1/16-Inch Capillary Inlet Adaptor Fitting Kit	kit	20633
Replacement Inlet Seal (1.2mm hole)	2-pk.	20390
Replacement Inlet Seal (1.2mm hole)	10-pk.	20391



For use with 0.53mm ID columns.

1/8-Inch Capillary Inlet Adaptor Fitting Kit
(Split/splitless fitting for 0.53mm ID capillary columns)

Our specially engineered high-precision, 1/8-inch split/splitless fitting accepts standard two-hole capillary ferrules and a standard 1/8-inch nut. This design makes column installation easy because the nut protrudes farther from the insulated injection port chamber. The column insertion depth is the same as the original equipment.

Kit includes adaptor fitting, capillary nut, stainless steel inlet seal, washer, and one 0.8mm ID two-hole ferrule.

Description	qty.	cat.#
1/8-Inch Capillary Inlet Adaptor Fitting Kit	kit	20645
0.53mm ID Dual-Column Installation (1/16-inch opening)	2-pk.	20392
0.53mm ID Dual-Column Installation (1/8-inch opening)	10-pk.	20393



Direct Replacement Reducing Nut

- Made from high-quality stainless steel.
- Meets original equipment performance.

Description	Similar to Agilent part #	qty.	cat.#
Reducing Nut	18740-20800	ea.	22078



Replacement Ferrules for Dual-Column Confirmational Analysis

Use 1/16-inch, two-hole ferrules with the 1/16-Inch Capillary Inlet Adaptor Fitting Kit (cat.# 20633); and 1/8-inch, two-hole ferrules with the 1/8-Inch Capillary Inlet Adaptor Fitting Kit (cat.# 20645).

Two-Hole Ferrule Size	Fits Nut	Fits Column ID	qty.	VespeI®/Graphite cat.#
0.4mm (1/16")	1/16"	0.25/0.28mm	5-pk.	20241
0.5mm (1/16")	1/16"	0.32mm	5-pk.	20242
0.8mm (1/8")	1/8"	0.45/0.53mm	5-pk.	20246



Dual-Column Direct Injection Tee
(for 1/4-inch packed column inlets)

The tee is designed with a glass spiral to promote sample vaporization and to provide even sample distribution to the two columns. The glass spiral also traps sample residue and minimizes the need for guard columns. A Press-Tight® taper in each outlet leg facilitates a perfect dead-volume-free connection to each analytical column (OD 0.4 to 0.8mm) and allows visual confirmation of the column connection.

Description	qty.	cat.#
DI Tee Kit (includes all fittings/ferrules)	kit	20412
Replacement Tee	ea.	20411

Air Diverters for Agilent GCs

- Divert GC exhaust heat away from the lab bench.
- Meet OEM performance.
- Easy to install—no tools required.

Description	Similar to Agilent part #	qty.	cat.#
Air Diverter for Agilent 5890/6890 GCs	19247-60510	ea.	22076
Air Diverter for Agilent 6850 GCs	G2630-60710	ea.	20926

**MLE Capillary Tool Kit for Agilent GCs**

Includes:

- capillary installation gauge for Agilent GCs
- injector wrench for Agilent GCs
- septum nut removal tool
- 1/8", 3/16", and 1/4" nylon brushes
- 1/4", 3/8", and 3/16" stainless steel wire tube brushes
- stainless steel surface brush
- 6 stainless steel jet reamers (0.25–0.65mm OD)
- 1/4" x 3/16" open end wrench
- 3/8" x 7/16" open end wrench
- 7/16" x 1/2" open end wrench
- 1/2" x 9/16" open end wrench
- rubber-tipped slide-lock tweezers
- scoring wafers with handles
- inlet liner removal tool
- septum puller
- mini wool puller/insertor tool
- 4-inch tapered needle file
- swivel head flashlight
- mini hand drill set
- 15cm compact steel ruler
- pocket magnifier
- high temperature string (1 meter)
- pipe cleaner (12-inch)
- cotton tip swabs (pk. of 25)



new!

Description	qty.	cat.#
MLE Capillary Tool Kit for Agilent GCs	kit	22186

Cool Tools



Injector Wrench for Agilent 5890/6890/6850 GCs

- Use to remove the septum nut and weldments during GC maintenance.
- High-quality stainless steel construction.
- Meets original equipment performance.



Use the smaller end to remove the septum nut.



Use the larger end to tighten the split/splitless weldment nut.

Description	Similar to Agilent part #	qty.	cat.#
Injector Wrench for Agilent 5890/6890/6850 GCs	19251-00100	ea.	22065



Make your injection port threads like new!

Rethreading Tool

- Repair worn or damaged threads in injection ports, fittings, etc.
- Built-in guide to prevent cross-threading.



- 1) Worn & damaged threads can allow oxygen into the system—compromising analytical results and destroying columns.
- 2) Screw the tool completely onto the injection port in a clockwise direction. Unscrew the tool and inspect the threads, repeat as necessary. When done, wipe threads with methanol to remove any debris.

Description	qty.	cat.#
Rethreading Tool for 1/4" compression fittings (Agilent split/splitless injection ports)	ea.	23018

Use Restek's Cleaning Kit with ANY injection port!

FID/Injector Cleaning Kit

The FID/Injector Cleaning Kit includes:

- Nylon tube brushes (1/8", 3/16", 1/4").
- Pipe cleaner.
- Stainless steel tube brushes (3/8", 3/16", 1/4").
- Stainless steel surface brush.
- Stainless steel jet reamers.
- Emery cloth.



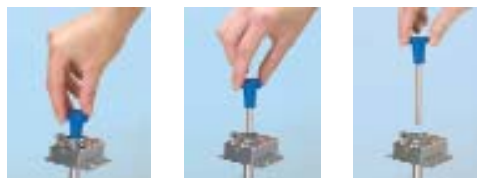
Description	qty.	cat.#
FID/Injector Cleaning Kit	kit	20120



No more burned fingers!

Inlet Liner Removal Tool

- Easily remove liner from injector—no more burned fingers.
- Made from high-temperature silicone.
- Won't chip or crack the liner.



Description	qty.	cat.#
Inlet Liner Removal Tool	3-pk.	20181

new! Flashlight with Swivel Head

- Ideal for tight spaces—like inside a GC oven.
- Uses two AA batteries (included).



Description	qty.	cat.#
Flashlight with Swivel Head	ea.	22187



Injection Port Split/Splitless Weldment Retaining Ring Pliers

- Easily removes snap ring on split/splitless weldment assemblies.
- Use with Agilent 5890/6890/6850 GCs.

Description	qty.	cat.#
Injection Port Split/Splitless Weldment Retaining Ring Pliers	ea.	26186

EZ No-Vent™ GC Column-Mass Spectrometer Connector

- Change GC/MS columns in minutes without venting—100µm transfer line throttles vacuum and prevents venting.
- Easy to install and maintain—no special tools or plumbing required.
- Gold-plated body for inertness.
- Deactivated transfer line keeps analytes focused; high-temperature polyimide ferrules eliminate leaks at the problematic transfer line fitting.
- Lower cost than other “no-vent” fittings.
- Available for Agilent GCs with 5971/5972 or 5973 GC/MS.

We designed the EZ No-Vent™ GC column-mass spectrometer connector to be simple and easy to use. A critical orifice in the EZ No-Vent™ connector minimizes the amount of oxygen allowed into the MS source, eliminating the need for purge gas and enabling you to skip the lengthy vent and pump-down cycle otherwise required when you make a column change. This can save nearly a day of downtime with each column change. The EZ No-Vent™ connector easily attaches to the MS source without special tools or extra plumbing. Figure 1 shows the internal structure of the connector.

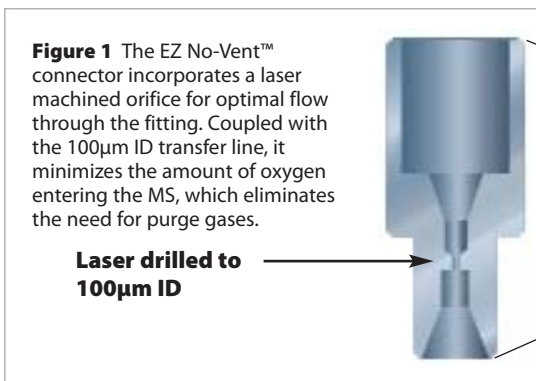
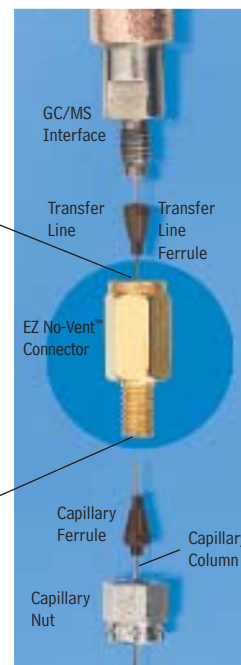
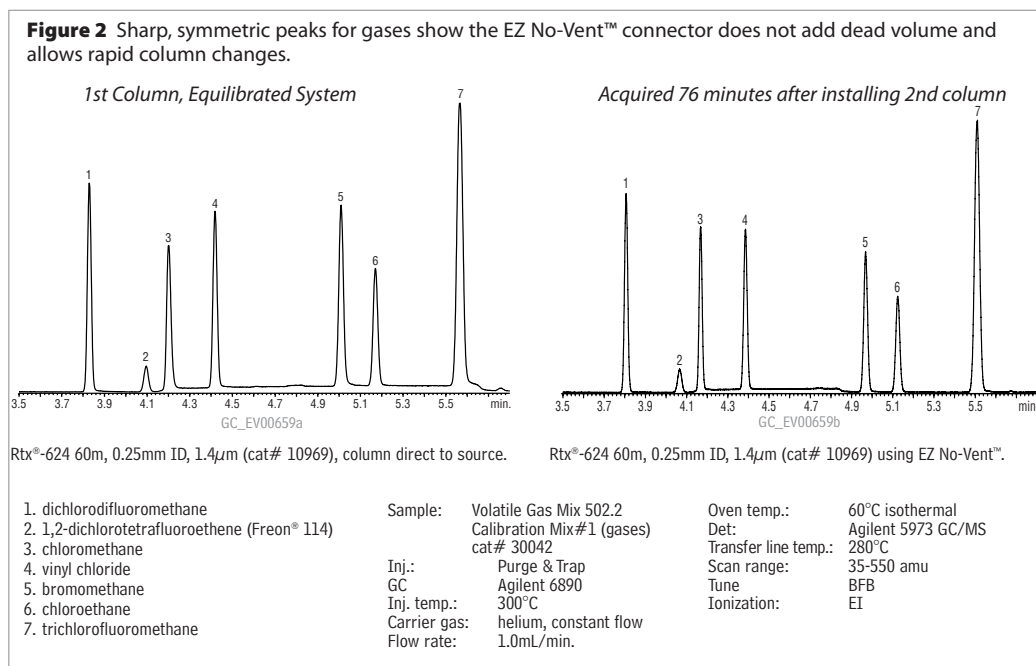


Figure 1 The EZ No-Vent™ connector incorporates a laser machined orifice for optimal flow through the fitting. Coupled with the 100µm ID transfer line, it minimizes the amount of oxygen entering the MS, which eliminates the need for purge gases.



Change columns in minutes—without venting!

Kit installs easily, without special tools or plumbing.



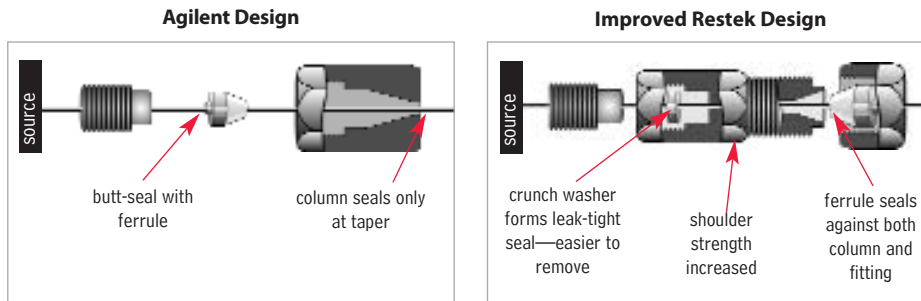
Description	qty.	cat.#
EZ No-Vent™ Connector Kit for Agilent 5971/5972 and 5973 GC/MS Kit includes: EZ No-Vent™ Connector, two 0.4mm ID ferrules for capillary column, two 0.4mm ID ferrules for transfer line, 100µm deactivated transfer line (3 ft.), column plug, column nut.	kit	21323
Replacement ferrules for connecting capillary column to EZ No-Vent™ Connector: 0.4mm ID (Polyimide)	2-pk.	21015
0.5mm ID (Polyimide)	2-pk.	21016
Replacement ferrules for connecting transfer line to EZ No-Vent™ Connector: 0.4mm ID	2-pk.	21043
Replacement 100µm deactivated transfer line	3 ft.	21018
Replacement EZ No-Vent™ Column Nut	5-pk.	21900
Replacement EZ No-Vent™ Plug	2-pk.	21915
Open-End Wrenches (1/4" x 5/16")	2-pk.	20110



Agilent's MSD interface uses a butt-seal to simultaneously seal the MSD source to the capillary column. This system is prone to leakage. Restek's MSD conversion fitting is designed with two separate seals to reduce the chance of leaks: a crunch washer seals the MSD conversion fitting to the source; a ferrule seals the capillary tubing to the conversion fitting.

MSD Conversion Fitting

- A flat, soft aluminum sealing ring deforms and butt-seals against the MSD interface.
- A standard Vespel® ferrule seals the column and 1/16-inch stainless steel nut.
- Fitting is constructed of nickel-plated brass for longevity and softness.
- Use any standard Vespel® or Vespel®/graphite 1/16-inch ferrule.
- Includes a 1/16-inch stainless steel nut and two replacement sealing rings. Order ferrules separately.



Description	qty.	cat.#
MSD Conversion Fitting	ea.	21314
Replacement Ring Seal for MSD Conversion Fitting	2-pk.	21313



MSD Source Nut

- 1.2mm nut bore permits easy removal of ferrules with a standard tapered-needle file (cat.# 20106).
- Made of brass to prevent thread-stripping on the transfer line.
- Improved design enhances ease of threading onto the transfer line and improves overall lifetime.

Description	Similar to Agilent part #	qty.	cat.#
(Detector) MSD Source Nut	05988-20066	2-pk.	20643

Capillary Installation Gauge for Agilent 5973/5975 MS

- Seats ferrules onto column for consistent installations.
- Made from high-quality stainless steel.



Install the nut and ferrule onto the column, then insert the column through the installation tool, exposing several centimeters at the exit end. Tighten the nut.



Score and remove the exposed end of the column, then loosen the nut.



The ferrule will be properly seated and should remain in place when light force is applied. Install the column into the GC/MS interface.

Description	Similar to Agilent part #	qty.	cat.#
Capillary Installation Gauge for Agilent 5973/5975 MS	G1099-20030	ea.	21894



Gold Tip Transfer Line

- For use with Agilent 5971/5972 MS Systems.
- Gold-plated for inertness.
- Meets or exceeds OEM performance.

Description	Similar to Agilent part #	qty.	cat.#
Gold Tip Transfer Line	05971-20305	ea.	24699

Replacement Interface with Bellows for Agilent 5971/5972 MS

- Meets or exceeds OEM performance.
- Made of high-quality stainless steel.

Description	Similar to Agilent part #	qty.	cat.#
Replacement Interface with Bellows for Agilent 5971/5972 MS	05971-60302	ea.	22659

**Replacement Interface Guide Tube for Agilent 5971/5972 MS**

- Meets or exceeds OEM performance.
- Made of high-quality stainless steel.

Description	Similar to Agilent part #	qty.	cat.#
Replacement Interface Guide Tube for Agilent 5971/5972 MS	05971-20307	ea.	22660

**Replacement Cold Sensor for Agilent 5971/5972 MS Diffusion Pump**

- Meets or exceeds OEM performance.
- Made of high-quality stainless steel.

Description	Similar to Agilent part #	qty.	cat.#
Replacement Cold Sensor for Agilent 5971/5972 MS Diffusion Pump	3103-0145	ea.	22661

**Replacement Diffusion Pump Fan Assemblies for Agilent 5971/5972 MS**

- 110/120 VAC

Description	Similar to Agilent part #	qty.	cat.#
Replacement Diffusion Pump Fan Assembly for Agilent 5971 MS	05971-60540	ea.	22662
Replacement Diffusion Pump Fan Assembly for Agilent 5972 MS	05972-60540	ea.	22663

**Rough Pump Oil #19 for MSD Pumps, Oil Vacuum Pump**

- Formulated from crude oil stocks known for their durability and line lubricating qualities.
- Use in Agilent 5973/5972/5971 and GCD mass spec systems, or in other manufacturers' MSD systems that require rough pump oil.
- Under average use, the oil in the foreline rough pump should be replaced every six months.

Description	Similar to Agilent part #	qty.	cat.#
Rough Pump Oil for MSD Pumps	6040-0834	1 liter	22687

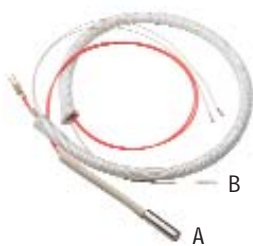
**Ion Source Cleaning Powder**

- Use this aluminium oxide powder to clean surfaces that contact the sample or ion beam when you encounter poor sensitivity and inadequate abundances at high masses.

Description	Similar to Agilent part #	qty.	cat.#
Ion Source Cleaning Powder	8660-0791	1 kg.	22685



Detector Supplies



Heater Cartridge & PRT Sensor for Agilent 5890 GCs

- Use with 5890 FID and split/splitless weldments.
- Meets or exceeds OEM performance.

Description	Similar to Agilent part #	qty.	cat.#
A + B) Injector/FID Heater + Injector/FID PRT Sensor	05890-61140	ea.	22068
A) Injector/FID Heater	19231-60620	ea.	22069
B) Injector/FID PRT Sensor	19231-60660	ea.	23035



FID Collector Housing Kits for Agilent GCs

- Meets or exceeds OEM performance.

Description	Similar to Agilent part #	qty.	cat.#
FID Collector Housing Kit for Agilent 5890 GCs (includes collector body, spanner nut, and silicone washer—order mount separately)	19231-20920	kit	23037
FID Collector Housing Kit for Agilent 6890 GCs (includes collector body, silicone washer, nut, and mount)	G1531-20550	kit	23045
FID Collector Housing for Agilent 6890 GCs	G1531-20740	ea.	23044
Replacement Silicone Washers for FID Collector Housing for Agilent 5890/6890 GCs	5180-4165	12-pk.	23064



FID Collector Mount for Agilent GCs

- Meets or exceeds OEM performance.

Description	Similar to Agilent part #	qty.	cat.#
A) FID Collector Mount for Agilent 5890 GCs	19231-20930	ea.	23036
B) FID Collector Mount for Agilent 6890 GCs	G1531-20550	ea.	23043



FID Base Weldment for Agilent GCs

- Meets or exceeds OEM performance.
- Includes brass nut.

Description	Similar to Agilent part #	qty.	cat.#
A) FID Base Weldment for Agilent 5890 GCs	19231-80580	ea.	23041
B) FID Base Weldment, Pack Column FID, for Agilent 6850/6890 GCs	G1531-80580	ea.	23052
C) FID Base Weldment, Capillary Column FID, for Agilent 6850/6890 GCs	G1531-80630	ea.	23053



Spanner Wrench for Agilent 5890/6890/6850 FID Collector Assemblies

- Easily remove the nut from the FID collector without damaging the nut.
- Unique, ergonomic handle—easy to grip.



Remove FID ignitor castle.



Easily loosen the nut by aligning the two pins on the bottom of the wrench with the two open slots on the nut...



...then turn counterclockwise...



...and remove.

Description	Similar to Agilent part #	qty.	cat.#
Spanner Wrench for Agilent 5890/6890/6850 FID Collector Assembly	19231-00130	ea.	22329

Direct Replacement FID Collector Assembly for Agilent 5890 GCs

- Constructed of high-quality stainless steel.
- Meets or exceeds OEM performance.

Description	Similar to Agilent part #	qty.	cat.#
FID Collector Assembly (includes insulators)	19231-60690	kit	23010
FID Collector Assembly w/Siltek® Ignitor Castle	—	kit	21131

Replacement FID Parts for Agilent 5890 GCs

- Meets or exceeds OEM performance.

Description	Similar to Agilent part #	qty.	cat.#
A) FID Collector (includes insulators)	19231-20970 19231-20960 19231-20950 19231-20940	ea.	21138
B) FID Collector Nut and Washer	5181-3311	set	21136
C) FID Ignitor*	19231-60680	ea.	21001
D) FID Ignitor Castle	19231-20910	ea.	21137
Siltek® FID Ignitor Castle	—	ea.	21135

*Also fits OI Analytical 4410 detector (similar to OI part # 191833).



SILTEK®
versions available.

Direct Replacement FID Collector Assembly for Agilent 6890/6850 GCs

- Constructed of high-quality stainless steel.
- Meets or exceeds OEM performance.

Description	Similar to Agilent part #	qty.	cat.#
FID Collector Assembly (includes insulator)	G1531-60690	kit	21699
FID Collector Assembly w/Siltek® Ignitor Castle	—	kit	21132

Replacement FID Parts for Agilent 6890/6850 GCs

- Meets or exceeds OEM performance.

Description	Similar to Agilent part #	qty.	cat.#
A) FID Collector (includes insulators)	G1531-20690 G1531-20700	ea.	21139
B) FID Collector Nut and Washer	19231-20940 5181-3311	set	21136
C) FID Ignitor*	19231-60680	ea.	21001
D) FID Ignitor Castle	19231-20910	ea.	21137
Siltek® FID Ignitor Castle	—	ea.	21135

*Also fits OI Analytical 4410 detector (similar to OI part # 191833).



Direct Replacement FID Flow Measuring Adaptor for Agilent 5890/6890/6850 GCs

- Makes setting flows easy.
- Meets or exceeds OEM performance.

Description	Similar to Agilent part #	qty.	cat.#
FID Flow Measuring Adaptor	19301-60660	ea.	21000



Detector Supplies

Replacement Jets

Standard Version

- Engineered with a fluted tip to guide the capillary column into the jet.
- Threads specially coated for easy installation and removal.
- Special processing ensures the highest degree of cleanliness.

High-Performance Version

- Similar to the standard version, but Siltek® treated.
- Extremely inert, use with active compounds.



Capillary Adaptable FID Replacement Jet for Agilent 5890/6890/6850 GCs (0.011-inch ID tip)

Description	Similar to		cat.#	qty.	cat.#
	Agilent part #	qty.			
Standard	19244-80560	ea.	20670	3-pk.	20671
High-Performance Siltek® Treated	19244-80560	ea.	20672	3-pk.	20673

Capillary Dedicated FID Replacement Jet for Agilent 6890/6850 GCs

0.011-Inch ID	Similar to		cat.#	qty.	cat.#
	Agilent part #	qty.			
Standard	G1531-80560	ea.	21621	3-pk.	21682
High-Performance Siltek® Treated	G1531-80560	ea.	21620	3-pk.	21683

Packed Column Replacement Jets for Agilent 5890/6890/6850 GCs

0.018-Inch ID	Similar to		cat.#	qty.	cat.#
	Agilent part #	qty.			
Standard	18710-20119	ea.	21694	3-pk.	21695
High-Performance Siltek® Treated	18710-20119	ea.	21696	3-pk.	21697

0.030-Inch ID	Similar to		cat.#	qty.	cat.#
	Agilent part #	qty.			
Standard	18789-80070	ea.	21688	3-pk.	21689
High-Performance Siltek® Treated	18789-80070	ea.	21686	3-pk.	21687

tech tip

Which FID Jet Should I Use?

There are two FID jet configurations for Agilent GCs. The longer “adaptable” jet fits both 5890 and 6890 GCs, and can be used with capillary or packed columns. The shorter “dedicated” jet is for the FID in the 6890 GC that is designed only for use with capillary columns.

restek
innovation!

FID Jet Removal Tool for Agilent 5890/6890/6850 FIDs

- Securely grips jet in socket for easy removal or installation.
- Unique, ergonomic handle—easy to hold.



Slip tool
over FID
jet...



...loosen
jet...



...and
remove.



Description	qty.	cat.#
FID Jet Removal Tool for Agilent 5890/6890/6850 FIDs	ea.	22328



Torx® Screwdriver Set

- Set includes TR-10, TR-15, and TR-20.
- Ideal for performing routine maintenance on Agilent 6890 GCs.

Description	qty.	cat.#
Torx® Screwdriver Set	set	23034

Detector Plug Nut

Use Restek's detector plug nut to cap off a detector for thermal cleaning, to check detector or make-up gas flow rates, or to prevent hydrogen from accidentally diffusing into the oven from an unused detector base.

Description	Similar to Agilent part #	qty.	cat. #
Detector Plug Nut	5020-8294	2-pk.	21883



FID/NPD Adaptor Fitting

- Easy to use, sturdy, compact stainless steel fitting.
- 1/16-inch nut uses standard graphite or Vespel®/graphite ferrules.
- Wrench pad won't turn when installing a capillary column.
- Includes 1/4- and 1/16-inch stainless steel nuts, and 1/4-inch Vespel® and 0.4mm ID graphite ferrules.

Description	qty.	cat. #
FID/NPD Adaptor Fitting	kit	20884



FID/NPD Capillary Adaptor Fitting for Agilent 5890/6890/6850 GCs

- High-quality stainless steel construction.
- Meets or exceeds OEM performance.

Description	Similar to Agilent part #	qty.	cat. #
FID/NPD Capillary Adaptor Fitting	19244-80610	ea.	22077



TCD Adaptor Fitting

Description	Similar to Agilent part #	qty.	cat. #
TCD Adaptor Fitting	19302-80020 G1532-80540	ea.	20269



ECD/FID Dual-Purpose Make-Up Gas Kit

Incorporates a better make-up gas flow profile and a straight section of inert Siltek® tubing as the capillary guide. To add make-up gas to an FID, remove the tubing guide and insert an FID jet tail. A direct replacement fitting with a special end connector is available for GCs factory-equipped with make-up gas. A complete kit is available for plumbing GCs that are not factory-equipped with make-up gas. Complete kit includes make-up gas fitting, Siltek® treated guide, 1/4" nut and ferrules, 1/16" nut, 0.4mm ID graphite ferrule, and fine metering valve.

Description	qty.	cat. #
ECD/FID Dual-Purpose Make-Up Gas Kit	kit	21300
ECD/FID Replacement Fitting for Restek Make-up Gas Kit	ea.	21324
Replacement ECD/FID Siltek® Guide	2-pk.	21302
ECD/FID Direct Replacement Fitting (includes 1/4" nut, Vespel®/graphite ferrule, 1/16" nut, 0.4mm ID graphite ferrule)	ea.	21301



Rugged design!

FID Gauge Pack for Agilent 5890 GCs

Pressure regulators and gauges for air & hydrogen. The 1/8-inch bulkhead allows easy hookup to instrument. Rated for inlet pressures to 250psi, outlet pressures of 0 to 60psi.

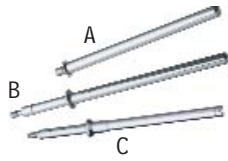
Description	qty.	cat. #
FID Gauge Pack for Agilent 5890 GCs	ea.	22071



Autosampler Parts

Replacement Parts for Agilent Autosamplers

- All parts meet or exceed OEM performance.



Injector Mounting Posts for Agilent Autosamplers

Description	Similar to Agilent part #	qty.	cat.#
A) Injector Mounting Post for Agilent 7673 Series Autosamplers for use with 5890 GCs	18597-60805	ea.	21236
B) Injector Mounting Post for Agilent 7673 Series Autosamplers for use with 6890 GCs	07673-21140	ea.	21237
C) Injector Mounting Post for Agilent 7683 Series Autosamplers	G2613-20500	ea.	21172



Turret Tray Assembly for Agilent 5890/6890 GC

- Holds sample, waste and solvent vials.

Description	qty.	cat.#
Turret Tray Assembly for Agilent 5890/6890 GC	ea.	22855



Autosampler Plunger Carrier Belt

Description	Similar to Agilent part #	qty.	cat.#
Autosampler Plunger Carrier Belt for Agilent 7673A and 7673B	07673-61275	ea.	22695



Carriage Motor Belt

Description	Similar to Agilent part #	qty.	cat.#
Carriage Motor Belt for Agilent 7673A and 7673B	1500-0676	ea.	22692

new!



Z-Belt for Agilent 7673B Autosampler

Description	Similar to Agilent part #	qty.	cat.#
Z-Belt for Agilent 7673B Autosampler	1500-0803	ea.	22332



Carriage Motor

Description	Similar to Agilent part #	qty.	cat.#
Carriage Motor for Agilent 7673A and 7673B	07673-60890	ea.	22693



Injector Turret Motor for Agilent 7673A & 7673B Injectors

Description	Similar to Agilent part #	qty.	cat.#
Injector Turret Motor for Agilent 7673A & 7673B Injectors	07673-60810	ea.	22337