

Replacement Cables

(for Agilent GCs, Integrators, & Autosamplers)

- Priced less than original equipment.
- Instructions and wiring diagrams included.
- Manufactured with only the highest-quality components.

did you **know?**

Restek provides pin schematics.

Connect an Agilent 5890 GC to an Agilent integrator (for second Inet integrator).

Description	Similar to Agilent part #	length	qty.	cat.#
Replacement Cable	35900-60610	6 ft.	ea.	20650
Replacement Cables	35900-60610	6 ft.	2-pk.	20651



Connect an Agilent 5890 GC to an Agilent 3396 integrator to enable remote starts (non-Inet connection from GC to integrator).

Description	Similar to Agilent part #	length	qty.	cat.#
Replacement Cable	03394-60560	6 ft.	ea.	20654



Connect an Agilent 3396 integrator to remote-start another piece of equipment or to start the Agilent 3396 integrator from that other piece of equipment.

Description	Similar to Agilent part #	length	qty.	cat.#
Replacement Cable	03394-60540	6 ft.	ea.	20655
Replacement Cables	03394-60540	6 ft.	2-pk.	20656



Connect an Agilent 5890 GC to a non-Agilent integrator or standard strip chart recorder.

Description	Similar to Agilent part #	length	qty.	cat.#
Replacement Cable	05890-60800	6 ft.	ea.	20652
Replacement Cables	05890-60800	6 ft.	2-pk.	20653



Connect an Agilent 5890 GC to remote-start another piece of equipment or to start the Agilent 5890 GC from that piece of equipment.

Description	Similar to Agilent part #	length	qty.	cat.#
Replacement Cable	05890-61080	6 ft.	ea.	20657



Connect an Agilent 3396 integrator to a non-Agilent GC.

Description	Similar to Agilent part #	length	qty.	cat.#
Replacement Cable	35900-60630	6 ft.	ea.	20658
Replacement Cables	35900-60630	6 ft.	2-pk.	20659



Connect an Agilent 5890 GC to an Agilent 35900C Interface or to an Agilent 7673A Autosampler to enable remote starts.

Description	Similar to Agilent part #	length	qty.	cat.#
Replacement Cable	35900-60700	6 ft.	ea.	20660
Replacement Cables	35900-60700	6 ft.	2-pk.	20661



Automatic liquid sampler stop/start cable for Agilent GCs.

Description	Similar to Agilent part #	length	qty.	cat.#
Replacement Cable	G1530-60930	7 ft.	ea.	20929



Connect an Agilent 6890 GC to a PC 9F/9F (RS232).

Description	Similar to Agilent part #	length	qty.	cat.#
Replacement Cable	G1530-60600	6 ft.	ea.	22694





GC Racer by Zip Scientific

- Saves time and money by increasing throughput.
- Makes fast GC possible with any capillary GC column.
- Easy to operate and install—truly a “plug and use” accessory.

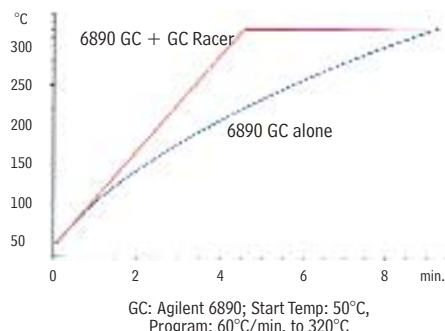
Fast gas chromatographic temperature programs can speed up elution of high boiling point compounds and late eluters, but often are not used to maximum advantage. The Agilent 5890 has a maximum temperature program rate of 70°C/min., but the factory heating elements in the 5890 only allow this maximum rate to be maintained up to a temperature of 100°C. The Agilent 6890 allows a maximum ramp rate of 75°C/min. at starting temperatures of 50–70°C and 20°C/min. at starting temperatures of 300–450°C.* For analysts trying to push temperature ramps as fast as possible, these restricted program rates can lead to longer analysis time and broader peaks.

The GC Racer system will maintain a temperature program rate of 70°C/min. up to 350°C or 60°C/min. to temperatures as high as 450°C in an Agilent 5890 or a rate of 70°C/min. up to 400°C in an Agilent 6890.

Restek and Zip Scientific have teamed up to bring you the GC Racer temperature programmer, a system that enhances conventional ovens with an auxiliary heater that is controlled by the GC. The GC Racer consists of a control unit and a resistive heating element that is placed on the floor of the GC oven. The heating element is connected to the controller, which is plugged into the main PC board of the GC and into a 120V standard grounded wall outlet. When the GC Racer controller detects that the factory heating elements are not keeping up with the programmed heating rate, the GC Racer heater is brought into the circuit to augment the heat being supplied to the oven.

The auxiliary heater design is similar to that of the original GC heater. At no time during the installation of the GC Racer system is the column removed from the oven, or disconnected from the detector or injection port.

Figure 1 Faster temperature programs increase sample throughput.



a plus 1 story

“We tried a GC Racer Temperature Programmer from Restek and now we want more! With the GC Racer, we can perform high

speed temperature programming to get the results we need, and we can use conventional columns and fittings. This is a great time and cost savings for us. Not only that, but, with this system, we don’t experience any leaks at the fittings, so we can use it with our mass spectrometer. All this for an economical price.”

Josh Hildabrand, Chemist, and **William Mock**, Lab Manager, Environmental Science Corporation

The simplicity of its components and installation make the Zip Scientific GC Racer system a valuable tool in the quest for high-speed GC, and a must-have add-on accessory for every 5890 or 6890 GC. The speed of analysis that can be achieved and the ease of installation will lead to direct savings of time and money by decreasing run time and increasing sample throughput.

for more info

GC Racer brochure
(lit. cat.# 59297) and
Applications Note
(lit. cat.# 59457)

Download your free printable pdfs from our website.



Description	voltage	qty.	cat.#
GC Racer for Agilent 5890 Series II (only) GC	120 volt	ea.	23024
GC Racer for Agilent 5890A (only) GC	120 volt	ea.	23025
GC Racer for Agilent 6890 (only) GC	120 volt	ea.	23028

*Use of higher voltage and amperage or a special insert purchased with the GC will allow slightly higher ramp rates.

Vespel® Ferrules

- 100% high-temperature polyimide.
- Stable to 350°C.
- Durable, leak-tight.

Graphite Ferrules

- Pre-conditioned to eliminate out-gassing.
- High-purity, high-density graphite.
- Smoother surface and cleaner edges than conventional graphite ferrules.
- Contain no binders that can off-gas or adsorb analytes.
- Stable to 450°C.

Vespel®/Graphite Ferrules

- 60%/40% Vespel®/graphite blend, offering the best combination of sealing and ease of workability.
- Seal with minimal torque, reusable, and preferred for vacuum and high-pressure uses.
- Stable to 400°C.
- Recommended for mass spec transfer lines.



Vespel® ferrules

Capillary Ferrules—For 1/16-Inch Compression-Type Fittings

Ferrule ID	Fits Column ID	qty.	Vespel®	Graphite	Vespel®/Graphite
0.3mm	< 0.18mm	10-pk.	22213	20233	20275
0.4mm	0.18/0.25/0.28mm	10-pk.	22214	20200	20211
0.4mm	0.18/0.25/0.28mm	50-pk.	—	20227	20229
0.5mm	0.32mm	10-pk.	22215	20201	20212
0.5mm	0.32mm	50-pk.	—	20228	20231
0.6mm	0.28mm**	10-pk.	—	—	20232
0.8mm	0.45/0.53mm	10-pk.	22216	20202	20213
0.8mm	0.45/0.53mm	50-pk.	—	20224	20230
1.0mm	0.75mm*	10-pk.	22217	21058	24912
1.2mm	0.75mm	10-pk.	22218	—	—
1.6mm	1.00mm*	10-pk.	—	21060	—



Encapsulated Ferrules—For 1/16-Inch Compression Fittings

- Reusable—will not deform and stick in fittings.
- Less torque needed to seal ferrule.
- Restek’s unique blend of graphite minimizes fragmentation and outgassing.

Ferrule ID	Fits Column ID	qty.	cat.#
0.4mm	0.25mm	10-pk.	21036
0.5mm	0.32mm	10-pk.	21037
0.8mm	0.53mm	10-pk.	21038



Reusable!

Compact Ferrules—For Agilent 5890/6890/6850 GCs

Ferrule ID	Fits Column ID	qty.	Graphite	Vespel®/Graphite
0.4mm	0.25/0.28mm	10-pk.	20250	20238
0.4mm	0.25/0.28mm	50-pk.	20251	20239
0.5mm	0.32mm	10-pk.	21007	20248
0.5mm	0.32mm	50-pk.	21008	20249
0.8mm	0.45/0.53mm	10-pk.	20252	20263
0.8mm	0.45/0.53mm	50-pk.	20253	20264
1.0mm	0.75mm*	10-pk.	21059	21056
1.6mm	1.00mm*	10-pk.	21061	21057



*For micropacked columns.
 **For 0.28mm MXT® columns.

Ferrules



Standard Ferrules—For 1/16-, 1/8-, and 1/4-Inch Fittings

Fitting Size	Ferrule ID	qty.	Vespel®	Graphite	Vespel®/Graphite
1/4"	3/16"	5-pk.	—	—	20258
1/16"	1/16"	10-pk.	22210	20207	20218
1/8"	1/8"	10-pk.	22211	20208	20219
1/8"	reduce to 1/16"	10-pk.	—	20209	20220
1/4"	1/4"	10-pk.	22212	20210	20221
1/4"	reduce to 1/8"	10-pk.	22219	20225	20222
1/4"	reduce to 1/16"	10-pk.	—	20226	20223



Two-Hole Ferrules—For 1/8-Inch and 1/16-Inch Compression-Type Fittings

Fitting Size	Ferrule ID	Fits Column ID	qty.	Vespel®/Graphite
1/16"	0.4mm	0.25/0.28mm	5-pk.	20241
1/16"	0.5mm	0.32mm	5-pk.	20242
1/8"	0.8mm	0.45/0.53mm	5-pk.	20246



Reducing Ferrules

Fitting Size	Ferrule ID	Fits Column ID	qty.	Graphite	Vespel®/Graphite
1/8"	0.4mm	0.25mm	5-pk.	20205	20254
1/8"	0.5mm	0.32mm	5-pk.	20205	20255
1/8"	0.8mm	0.53mm	5-pk.	20206	20215
1/4"	0.4mm	0.25mm	5-pk.	20203	—
1/4"	0.5mm	0.32mm	5-pk.	20203	20257
1/4"	0.8mm	0.45/0.53mm	5-pk.	20204	20217



Blank Ferrules—For 1/16-Inch Fittings

Fitting Size	Ferrule ID	qty.	Vespel®/Graphite
1/16"	no hole	10-pk.	20240



Alumaseal™ Ferrules*

- No more ferrule fragments in the transfer line; aluminum construction—will not crack or fragment.
- No retightening required after temperature cycles—excellent for GC/MS.
- Eliminate out-gassing, make leak-tight seals, for less detector noise.
- Unique two-piece design permanently locks on fused silica tubing without causing breakage.
- Will not stick in fittings, unlike Vespel® or graphite.
- Stable to 550°C.
- Use with any 1/16" compression-type fitting.

Ferrule ID	Fits Column ID	qty.	cat.#
0.4mm	0.25mm	10-pk.	21472
0.5mm	0.32mm	10-pk.	21473
0.8mm	0.53mm	10-pk.	21474

*Patent pending.



tech tip

Choosing the Right Ferrule

Although graphite and Vespel®/graphite ferrules each have advantages and disadvantages, the choice of ferrule composition is largely a personal preference. Graphite ferrules are soft, easy to seal, stable to 450°C, and contain no binders that might off-gas. Vespel®/graphite ferrules work better for vacuum and high-pressure applications (e.g., GC/MS) because they will not fragment or allow oxygen to permeate into the system, whereas graphite ferrules will. Because Vespel®/graphite ferrules are made from a harder material, they might require retightening after several temperature cycles. Alumaseal™ ferrules are ideal for GC/MS. They will not crack or fragment and require no retightening after temperature cycles.

Universal Press-Tight® Connectors

- Connect a guard column to an analytical column.
- Repair a broken column.
- Connect a column outlet to a transfer line.
- Deactivated Press-Tight® connectors assure better recovery of polar and non-polar compounds.
- Siltek® treated connectors are ideal for organochlorine pesticides analysis.
- Fit column ODs from 0.33–0.74mm (Restek 0.1mm–0.53mm ID).

Description	5-pk.	25-pk.	100-pk.
Universal Press-Tight® Connectors	20400	20401	20402
Deactivated, Universal Press-Tight® Connectors	20429	20430	20431
Siltek® Treated Universal Press-Tight® Connectors	20480	20449	20481

**Universal Angled Press-Tight® Connectors**

- Ideal for connecting a guard column to an analytical column.
- Made from inert fused silica.
- Angle approximates the curvature of a capillary column, reduces strain on column-end connections.
- Deactivated Press-Tight® connectors assure better recovery of polar and non-polar compounds.
- Siltek® treated connectors are ideal for organochlorine pesticides analysis.
- Fit column ODs from 0.33–0.74mm (Restek 0.1mm–0.53mm ID).

Description	5-pk.	25-pk.	100-pk.
Universal Angled Press-Tight® Connectors	20446	20447	20448
Deactivated Universal Angled Press-Tight® Connectors	20446-261	20447-261	20448-261
Siltek® Treated Universal Angled Press-Tight® Connectors	20482	20483	20484

**Universal “Y” Press-Tight® Connectors**

An alternative method of performing dual-column confirmational analyses!

- Split sample flow onto two columns.
- Split a single column flow to two detectors—perform confirmation analysis with a single injection.
- Deactivated Press-Tight® connectors assure better recovery of polar and non-polar compounds.
- Siltek® treated connectors are ideal for organochlorine pesticides analysis.
- Fit column ODs from 0.33–0.74mm (Restek 0.1mm–0.53mm ID).

Description	ea.	3-pk.
Universal “Y” Press-Tight® Connector	20405	20406
Deactivated Universal “Y” Press-Tight® Connector	20405-261	20406-261
Siltek® Treated Universal “Y” Press-Tight® Connector	20485	20486

**Universal Angled “Y” Press-Tight® Connectors**

- Perform confirmation analysis with a single injection.
- Made from inert fused silica.
- Inlet and outlet ends conform to the column curvature—alleviates column-end connection strain.
- Deactivated Press-Tight® connectors assure better recovery of polar and non-polar compounds.
- Siltek® treated connectors are ideal for organochlorine pesticides analysis.
- Fit column ODs from 0.33–0.74mm (Restek 0.1mm–0.53mm ID).

Description	ea.	3-pk.
Universal Angled “Y” Press-Tight® Connector	20403	20404
Deactivated Universal Angled “Y” Press-Tight® Connector	20403-261	20404-261
Siltek® Treated Universal Angled “Y” Press-Tight® Connector	20487	20469

**Universal “X” Press-Tight® Connectors**

- Connect a column to three detectors.
- Connect a column to two detectors and a sniffer port.
- Split sample flow onto three columns.
- Deactivated Press-Tight® connectors assure better recovery of polar and non-polar compounds.
- Fit column ODs from 0.33–0.74mm (Restek 0.1mm–0.53mm ID).

Description	ea.	3-pk.
Universal “X” Press-Tight® Connector	20407	20408
Deactivated Universal “X” Press-Tight® Connector	20407-261	20408-261
Siltek® Treated Universal “X” Press-Tight® Connector	20407-266	20408-266

**Polyimide Resin**

- Permanently connects a Press-Tight® connector to a fused silica column.

Description	Max. Temp.	qty.	cat.#
Polyimide Resin	350°C	5 grams	20445



Connectors



Patent pending.

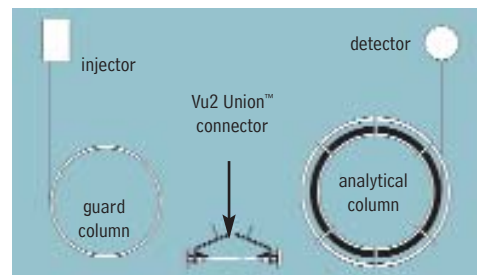
Secure, reliable
column-to-column
connections!

Vu2 Union™ Connectors

- Connect a guard column to an analytical column.
- Connect a column to a transfer line.
- Connect two columns in series.
- Repair a broken column.

Restek's Vu2 Union™ connector combines the simplicity of a Press-Tight® union with the strength of a metal union. The Vu2 Union™ connector reliably couples one analytical column to another, or to a transfer line or guard column. The columns cannot unexpectedly disconnect, even at temperatures as high as 400°C.

A guard column connected to an analytical column by a Vu2 Union™ connector.



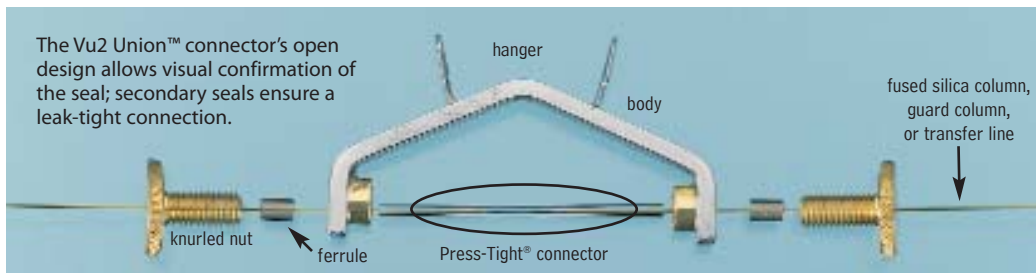
How does a Vu2 Union™ connector work?

A Press-Tight® union in the Vu2 Union™ connector joins the fused silica ends together; the ferrule and knurled nut at each end of the connector hold the tubing in place via a secondary seal between the ferrule and the Press-Tight® union. Each knurled nut applies independent pressure to each ferrule, to make a leak-tight seal with the column end. These ultra-strong connections will not unexpectedly disconnect under temperature changes, vibrations, or other stresses normally encountered in GC analyses. The open design allows visual confirmation of the seal between the column and the Press-Tight® union, to ensure confidence in the connection. Hang the connector from the column cage, to minimize stress on the connections.

Who will benefit from using Vu2 Union™ connectors?

Any analyst using guard columns, transfer lines, or restrictor tubing, performing a dual-column analysis with columns connected in series, or seeking to repair a broken column will find Vu2 Union™ connectors the simple, reliable, easy-to-use solution to their connection needs.

NOTE: Not recommended for GC column-to-MS connections—use the Vacuum Vu-Union® (see our general catalog or our website).



Kits include: Vu2 Union™ body, 2 knurled nuts, 2 Press-Tight® unions, and 4 ferrules

Description	Ferrules Fit Column ID	qty.	cat.#
Vu2 Union™ Connector Kit	0.10/0.15mm	kit	22220
Vu2 Union™ Connector Kit	0.18/0.28mm	kit	21105
Vu2 Union™ Connector Kit	0.32mm	kit	21106
Vu2 Union™ Connector Kit	0.45/0.53mm	kit	21107
Knurled nut		2-pk.	21108

Universal Press-Tight® Connectors



Description	5-pk.	25-pk.	100-pk.
Universal Press-Tight® Connectors	20400	20401	20402
Deactivated, Universal Press-Tight® Connectors	20429	20430	20431
Siltek® Treated Universal Press-Tight® Connectors	20480	20449	20481

Graphite Ferrules for Vu2 Union™ Connectors

- High-purity, high-density graphite.
- Stable to 450°C.
- No binders that can off-gas or adsorb analytes.
- Smooth surface and clean edges.



Ferrule ID	Fits Column ID	Graphite 2-pk.	Graphite 10-pk.
0.3mm	0.10/0.15mm	22221	22222
0.4mm	0.18/0.28mm	20280	20281
0.5mm	0.32mm	20282	20283
0.8mm	0.45/0.53mm	20284	20285

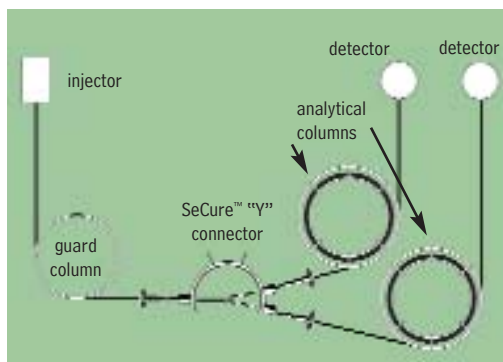
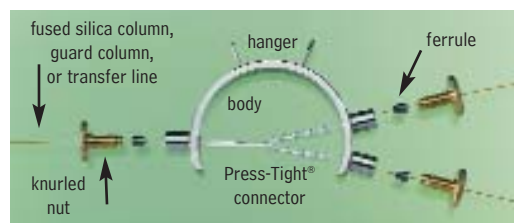
SeCure™ “Y” Connector Kits

- Connect two analytical columns to a transfer line or guard column.
- Use standard “Y” Press-Tight® connectors and 1/16" graphite ferrules.
- Reliable seal integrity, will not unexpectedly disconnect during temperature-programmed analyses.
- Open design allows visual confirmation of the seal for added confidence in the connection.

Combine the simplicity of a “Y” Press-Tight® connector with the strength of a metal union. The ferrules and knurled nuts hold the fused silica tubing in place, which prevents the tubing from unexpectedly disconnecting, even at temperatures as high as 400°C.

The SeCure™ “Y” Connector’s open design allows visual confirmation of the seal; secondary seals ensure a leak-tight connection.

Dual-column confirmational analysis with a single injection—one of the SeCure™ “Y” connector’s many uses.



Patent pending.

Secure, reliable
column-to-column
connections!

Kits include: SeCure™ “Y” connector body, 3 knurled nuts, “Y” Universal Press-Tight® union, 3 ferrules.

Description	Ferrules Fit Column ID	qty.	cat.#
SeCure™ “Y” Connector Kit	0.25/0.28mm	kit	20276
SeCure™ “Y” Connector Kit	0.32mm	kit	20277
SeCure™ “Y” Connector Kit	0.45/0.53mm	kit	20278
Knurled nut		3-pk.	20279

a plus 1 story

“Restek is a great corp. that keeps us operating on a daily basis with your GC supplies. We really love the new SeCure™ “Y” Connector. It has worked wonders for us.”

Eric A. Lorge, Project Manager,
Major Equipment Manufacturer,
Environmental Lab

Universal “Y” Press-Tight® Connectors

- Split sample flow onto two columns.
- Split a single column flow to two detectors—perform confirmation analysis with a single injection.
- Deactivated Press-Tight® connectors assure better recovery of polar and non-polar compounds.
- Siltek® treated connectors are ideal for organochlorine pesticides analysis.
- Fit column ODs from 0.33–0.74mm (Restek 0.1mm–0.53mm ID).

Description	ea.	3-pk.
Universal “Y” Press-Tight® Connector	20405	20406
Deactivated Universal “Y” Press-Tight® Connector	20405-261	20406-261
Siltek® Treated Universal “Y” Press-Tight® Connector	20485	20486

**Graphite Ferrules for SeCure™ “Y” Connectors**

- Preconditioned to minimize out-gassing.
- High-purity, high-density graphite.
- Stable to 450°C.
- No binders that can off-gas or adsorb analytes.
- Smooth surface and clean edges.

Ferrule ID	Fits Column ID	Graphite 10-pk.	Graphite 50-pk.
0.4mm	0.18/0.25/0.28mm	20200	20227
0.5mm	0.32mm	20201	20228
0.8mm	0.45/0.53mm	20202	20224



please note

Use for fused silica-to-fused silica or fused silica-to-metal connections.

MXT™ Low-Dead-Volume Connector Kits for Metal Columns are also available.

See our general catalog or our website.

MXT™-Union Connector Kits for Fused Silica Columns

- Low-dead-volume, leak-tight connection.
- Reusable.
- Siltek® treatment ensures maximum inertness.
- Ideal for connecting a guard column or transfer line to an analytical column.
- Use to oven temperatures of 350°C.
- Available in union and “Y” configurations.

These MXT™ connectors can be used with fused silica tubing, because of a Valcon polyimide 1/32-inch one-piece fused silica adaptor. This unique graphite-reinforced composite allows a capillary column to slide into the adaptor and be locked in place simply by loosening and tightening the fitting.



MXT™-Union Connector Kits for Fused Silica Columns

Each kit contains the MXT™ union, two 1/32-inch nuts and two one-piece fused silica adaptors.

Description	qty.	cat.#
For 0.25mm ID Fused Silica Columns	kit	21386
For 0.32mm ID Fused Silica Columns	kit	21385
For 0.53mm ID Fused Silica Columns	kit	21384



MXT™ “Y”-Union Connector Kits for Fused Silica Columns

Each kit contains the MXT™ union, three 1/32-inch nuts and three one-piece fused silica adaptors.

Description	qty.	cat.#
For 0.25mm ID Fused Silica Columns	kit	21389
For 0.32mm ID Fused Silica Columns	kit	21388
For 0.53mm ID Fused Silica Columns	kit	21387



1/32-Inch Replacement Nut

Description	qty.	cat.#
1/32" Replacement Nut	5-pk.	20389

Valco® Connectors—One-Piece Valcon Polyimide Adaptor Ferrule for Fused Silica

We recommend a one-piece adaptor ferrule for use in fittings in which the ferrule will not be removed. Connections are made or broken by tightening or loosening the fitting nut and sliding the tubing in or out. Fused silica adaptor ferrules are Valcon polyimide, a unique graphite-reinforced composite, specially prepared to maximize mechanical stability at temperatures to 350°C. The determining factor for selecting adaptor ferrule size is the fused silica tubing OD.



1/32-Inch Adaptor Ferrule (Valcon Polyimide)

Tubing OD	Tubing ID	Valco® #	qty.	cat.#
0.25 ≤ 0.40mm	0.25mm	FS.4-5	5-pk.	20137
0.40 ≤ 0.50mm	0.32mm	FS.5-5	5-pk.	20140
0.50 ≤ 0.80mm	0.53mm	ZF.5V-5	5-pk.	20141
1/32" Replacement Nut			5-pk.	20389



1/4-Inch–3/16-Inch Open-End Wrenches

High-quality miniature wrenches to use with MXT™ low-dead-volume connectors.

Description	qty.	cat.#
1/4"-3/16" Open-End Wrenches	2-piece set	20388

tech tip

Coupling GC Columns

An MXT™ connector is a good alternative to a glass connector when coupling GC columns. This connector is constructed from stainless steel and will not break; it uses ferrules for sealing. The design ensures low dead volume, and Siltek® treatment ensures the MXT™ connector is inert—both features help minimize peak tailing. MXT™ connectors can be used to connect metal to metal, metal to fused silica, or fused silica to fused silica tubing. When connecting metal tubing, use 1/32-inch stainless steel ferrules (see our general catalog or visit www.restek.com); for fused silica tubing, use Valcon polyimide adaptor ferrules (see above).

Thermal Gas Purifier*

- Removes oxygen, water, carbon monoxide, carbon dioxide, hydrocarbons (except methane) to ppb levels—pure enough for MS.
- Packed with reactor-grade, pure getter material for maximum efficiency and no contamination.
- Welded end-fittings on getter tubes eliminate leaks.
- Each tube has 12L oxygen and 35L water vapor capacity.
- Maximum flow: 1 liter/minute.

The getter material in Restek’s re-engineered line of thermal gas purifiers reacts chemically with impurities in the carrier gas stream. Because the reaction is non-reversible, there is no possibility of contaminants breaking through the thermal gas purifier.

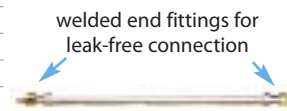
Gas purification is very economical when you use a thermal gas purifier. Getter tubes normally require changing only once per year; heavy use or very impure feed gas may require more frequent getter tube replacement.



Single-Tube Model



Dual-Tube Model



welded end fittings for leak-free connection

Dimensions: 13" x 1/2"
(33 x 1.3 cm)

Restek Single-Tube Thermal Gas Purifier, 110 Volt (1 tube included)**	qty.	cat.#
1/8" Fittings	ea.	21496
1/4" Fittings	ea.	21497
Restek Dual-Tube Thermal Gas Purifier, 110 Volt (2 tubes included)**	qty.	cat.#
1/8" Fittings	ea.	21498
1/4" Fittings	ea.	21499
Replacement Getter Tube	qty.	cat.#
1/8" Fittings (Similar to Supelco part# 2-2396)	ea.	21661
1/4" Fittings (Similar to Supelco part# 2-2398)	ea.	21660

*Use with helium or nitrogen carrier gas only. Do not use with hydrogen, oxygen, or air—a violent reaction and/or fire will occur.
**Single-tube model dimensions: 15" x 7" x 6" (38 x 17.8 x 15.2 cm). Dual-tube model dimensions: 15" x 10" x 6" (38 x 25.4 x 15.2 cm).

Pressure Gauge Kit

- Use an in-line pressure gauge to indicate when the Thermal Gas Purifier getter tube should be replaced.
- Includes 1/8" tee and 0–100 psi gauge.



Always know the status of the Thermal Gas Purifier getter tube: change tube when pressure drops below 10psi.

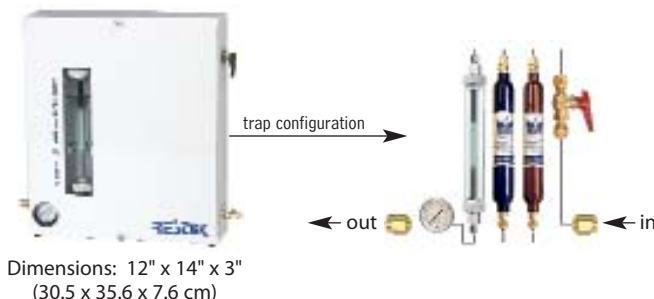
Description	qty.	cat.#
In-line Pressure Gauge Kit for Thermal Gas Purifiers	kit	21657

Restek Gas Management System

- Removes moisture, hydrocarbons, and oxygen from carrier gas, extending column lifetime.
- Produces high-purity carrier gas for most applications.
- Includes one each: moisture, hydrocarbon, and indicating oxygen trap.
- Replacing traps is safe and easy.
- Maximum flow: 1 liter/minute.

did you know?

The Restek Gas Management System removes water vapor (to 10ppb), hydrocarbons (to 0.1ppm), and oxygen (to less than 0.1ppm) with three traps housed in one unit.



Description	qty.	cat.#
Restek Gas Management System (includes fittings for 1/8" and 1/4" gas line)	ea.	21999
Replacement Traps	qty.	cat.#
High-Capacity Moisture Trap, 1/8" Fittings	ea.	21997
Capillary-Grade Hydrocarbon Trap, 1/8" Fittings	ea.	21991
Indicating Oxygen Trap, 1/8" Fittings	ea.	22010



did you know?

All Super-Clean™ filter cartridges (except hydrocarbon filter cat.# 22030) feature easy-to-read indicators. The indicator code is shown on every trap so there is no confusion about when to replace it.

tech tip

Oxygen and Moisture Traps

We highly recommend oxygen and moisture traps for make-up gas when operating sensitive detectors such as electron capture detectors (ECD). The hydrogen reaction gas for sensitive electrolytic conductivity detectors (ELCD) also requires a hydrocarbon trap, to remove trace impurities.

Super-Clean™ Gas Filters

- High-purity output ensures 99.9999% pure gas.
- “Quick connect” fittings for easy, leak-tight cartridge changes.
- Glass inside to prevent diffusion; plastic outside for safety.

Designed for fast, simple cartridge changing

Cartridge systems make changing gas filters quick and easy, and Super-Clean™ gas filters are the latest in cartridge-style gas filtration. A baseplate allows cartridges to be exchanged without introducing oxygen. Spring-loaded check valves seal when a filter is removed and open only when a new filter has been locked in place. There is no longer a need for loosening and tightening fittings every time a trap is changed, and your system will not become contaminated during the process.

With available 2- or 3-position baseplates, you can purify all GC gas streams at one location. Figure 1 shows some possible filter cartridge combinations using these baseplates. Any combination is possible because any Restek Super-Clean™ filter cartridge can be used with any Restek baseplate.

High-purity output for improved sensitivity (Table I)

The Triple Filter cartridge (cat.# 22020) is ideal for purifying carrier gas. This trap contains oxygen, moisture, and hydrocarbon scrubbers in one cartridge. The purity of your carrier gas after flowing through the Triple Filter is better than six-9s (99.9999% pure), which is ideal for sensitive mass spectrometry (MS) or ECD analyses, and for protecting your analytical columns against damage from contaminated carrier gas.

The Fuel Gas Filter cartridge (cat.# 22022) is perfect for purifying flame ionization detector (FID) fuel gases, removing both moisture and hydrocarbons. Using the Fuel Gas Filter for FID hydrogen and air will produce a stable baseline, improving overall reproducibility and sensitivity.

Figure 1 Filter cartridges can be configured for different applications.

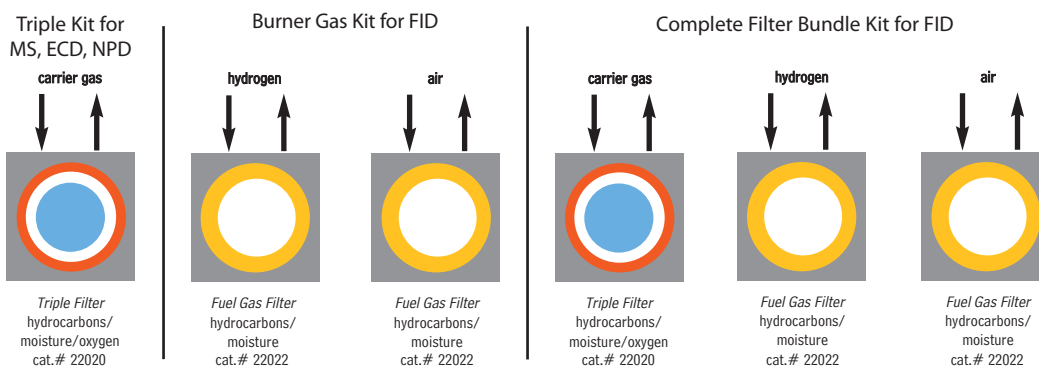


Table I Each Super-Clean™ filter provides high-purity outlet gas.

Type of Filter	Outlet Gas Quality (%)	Maximum Pressure/Maximum Flow Rates	Use for:	Indicator Color Change	Capacity			Estimated Lifetime (years)
					H ₂ O (g)	O ₂ (mL)	Hydrocarbons (g)	
Moisture cat.# 22028	>99.9999	11 bar 159psi/ 7 L/min.	Inert carrier gas Air Hydrogen	Yellow to clear	7.2	—	—	>2
Oxygen cat.# 22029	>99.9999	11 bar 159psi/ 7 L/min.	Inert carrier gas	Green to grey	NA	1000	—	>2
Hydrocarbons cat.# 22030	>99.9999	11 bar 159psi/ 7L/min.	Inert carrier gas Air Hydrogen	No indicator	NA	—	12 ³	>2
Fuel Gas ¹ cat.# 22022	>99.9999	11 bar 159psi/ 7L/min.	Inert carrier gas Air Hydrogen	Yellow to clear	3.5	—	24 ³	>1.5
Triple ² cat.# 22020	>99.9999	11 bar 159psi/ 7L/min.	Inert carrier gas	Yellow to clear Green to grey	1.8	500	4 ³	>1
Helium Specific ² cat.# 21982	>99.9999	11 bar 159psi/ 7L/min.	Helium	Yellow to clear Green to grey	1.8	500	—	>1

¹Removes hydrocarbons, moisture.

²Removes hydrocarbons, moisture, oxygen.

³As *n*-butane.

Super-Clean™ Filter and Baseplate Kits

Description	qty.	cat.#
Carrier Gas Cleaning Kit (includes mounting baseplate, 1/8" inlet/outlet fittings, and oxygen/moisture/hydrocarbon Triple Filter)	kit	22019
Fuel Gas Purification Kit (includes mounting baseplate, 1/8" inlet/outlet fittings, and hydrocarbon/moisture Fuel Gas Filter)	kit	22021



All traps measure: 10³/₈" x 1³/₄"
(27 x 4.4 cm)
Each baseplate unit measures:
4" x 4" x 1⁷/₈"
(10.2 x 10.2 x 4.8 cm)

Replacement Filters

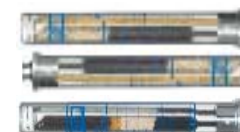
Description	qty.	cat.#
Replacement Triple Filter (removes oxygen, moisture and hydrocarbons)	ea.	22020
Replacement Fuel Gas Filter (removes moisture and hydrocarbons)	ea.	22022



Filter Bundle Kit

- Kit includes two Fuel Gas Filters for FID fuel gases and one Triple Filter for carrier gas.

Description	qty.	cat.#
Filter Bundle Kit	kit	22031



Super-Clean™ Ultra-High Capacity Filters

Description	qty.	cat.#
Ultra-High Capacity Hydrocarbon Filter	ea.	22030
Ultra-High Capacity Moisture Filter	ea.	22028
Ultra-High Capacity Oxygen Filter	ea.	22029



Helium-Specific Super-Clean™ Filter and Kit

- Specifically designed for purification of helium in GC/MS systems.
- Traps are packed and conditioned using helium.
- Uses standard single-position baseplate.

Description	qty.	cat.#
Helium-Specific Carrier Gas Cleaning Kit (includes mounting baseplate, 1/8" inlet/outlet fittings, and oxygen/moisture/hydrocarbon Helium-Specific Filter)	kit	21983
Replacement Helium-Specific Filter (removes oxygen, moisture and hydrocarbons)	ea.	21982



Baseplates

- Standard baseplate fittings are 1/8". To adapt to 1/4", order 1/8" to 1/4" tube-end unions (cat. # 21833, below).

Description	qty.	cat.#
Single-Position Baseplate	ea.	22025
2-Position Baseplate	ea.	22026
3-Position Baseplate	ea.	22027



Wall Mounting Bracket

- Baseplates can be mounted by using screws and the mounting holes on the baseplate, or by using this optional wall mounting bracket.

Description	qty.	cat.#
Wall Mounting Bracket for Super-Clean™ Baseplates	ea.	21984



Replacement O-Rings for Cartridge Baseplates

- Pack includes 10 large O-rings and 10 small O-rings.

Description	qty.	cat.#
Replacement O-Rings for Cartridge Baseplates	20-pk.	22023



1/8-Inch to 1/4-Inch Tube-End Unions

- To adapt 1/8" Super-Clean™ baseplate fittings to 1/4", use 1/8" to 1/4" tube-end unions.

Description	qty.	cat.#
1/8" to 1/4" Tube-End Unions	5-pk.	21833





Kelli Steindl
GC Accessories Associate
Product Marketing
Manager
2+ years of service!

Click-On Inline Super-Clean™ Traps

- High-purity output ensures 99.9999% pure gas.
- Click-On fittings for easy, leak-tight cartridge changes; brass or stainless steel, 1/4" or 1/8".
- Helium-Specific Triple Trap is ideal for GC/MS.

Using the same features and benefits as the Super-Clean™ base-plates and filters (page 39), Click-On adaptor connectors allow cartridges to be exchanged without introducing oxygen. Spring-loaded check valves seal when a filter is removed and open only when a new filter has been locked in place. There is no need for loosening and tightening fittings every time a trap is changed, and your system will not become contaminated during the process.

The Triple Trap is ideal for purifying carrier gas—it contains oxygen, moisture, and hydrocarbon scrubbers in one cartridge.

The Fuel Gas Trap is ideal for purifying flame ionization detector (FID) fuel gases, removing both moisture and hydrocarbons.

The Helium-Specific Triple Trap is ideal for purifying helium in GC/MS systems. This trap is packed and purged under helium and contains oxygen, moisture, and hydrocarbon scrubbers in one cartridge.

Trap replacement depends on the quality of the incoming gas. Use the double connector and install an indicating cartridge after a trap to indicate when the trap should be replaced.



Filter Type	Gas Quality at Outlet	Maximum Pressure	Maximum Flow (L/min.)	Use For	H ₂ O (g)	Capacity O ₂ (mL)	Hydrocarbons (g)	Estimated Lifetime (years)
Moisture cat.#22467	>99.9999	11 bar 160psi	25	Inert carrier gas, helium, air, H ₂	21	NA	NA	>3
Oxygen cat.#22468	>99.9999	11 bar 160psi	25	Inert carrier gas	NA	3000	NA	>3
Hydrocarbon cat.#22466	>99.9999	11 bar 160psi	25	Inert carrier gas, helium, air, H ₂	NA	NA	36 ³	>3
Fuel Gas ¹ cat.#22465	>99.9999	11 bar 160psi	25	Inert carrier gas, helium, air, H ₂	10	NA	18 ³	>2
Triple ² cat.#22464	>99.9999	11 bar 160psi	25	Inert carrier gas	6	1000	12 ³	>2

¹Removes hydrocarbons, moisture.

²Removes hydrocarbons, moisture, oxygen.

³As *n*-butane.

NOTE: Super-Clean™ Gas Filters are recommended for purifying non corrosive gases with low concentrations of contaminants. The maximum concentration of oxygen in the incoming gas stream for oxygen purifiers is 0.5%.

Click-On Inline Super-Clean™ Traps and Connector Kits



Description	qty.	cat.#
Carrier Gas Purification Kit, 1/8" Stainless Steel		
Includes (2) 1/8" SS connectors and (1) oxygen/moisture/hydrocarbon triple trap	kit	22456
Carrier Gas Purification Kit, 1/8" Brass		
Includes (2) 1/8" brass connectors and (1) oxygen/moisture/hydrocarbon triple trap	kit	22457
Carrier Gas Purification Kit, 1/4" Stainless Steel		
Includes (2) 1/4" SS connectors and (1) oxygen/moisture/hydrocarbon triple trap	kit	22458
Carrier Gas Purification Kit, 1/4" Brass		
Includes (2) 1/4" brass connectors and (1) oxygen/moisture/hydrocarbon triple trap	kit	22459
Fuel Gas Purification Kit, 1/8" Stainless Steel		
Includes (4) 1/8" SS connectors and (2) hydrocarbon/moisture traps	kit	22460
Fuel Gas Purification Kit, 1/8" Brass		
Includes (4) 1/8" brass connectors and (2) hydrocarbon/moisture traps	kit	22461
Fuel Gas Purification Kit, 1/4" Stainless Steel		
Includes (4) 1/4" SS connectors and (2) hydrocarbon/moisture traps	kit	22462
Fuel Gas Purification Kit, 1/4" Brass		
Includes (4) 1/4" brass connectors and (2) hydrocarbon/moisture traps	kit	22463

Click-On Inline Super-Clean™ Replacement Traps

Description	qty.	cat.#
Click-On Super-Clean™ Replacement Triple Trap (removes oxygen, moisture and hydrocarbons)	ea.	22464
Click-On Super-Clean™ Replacement Fuel Gas Trap (removes moisture and hydrocarbons)	ea.	22465



Click-On Inline Super-Clean™ Ultra-High Capacity Traps

Description	qty.	cat.#
Ultra-High Capacity Hydrocarbon Trap	ea.	22466
Ultra-High Capacity Moisture Trap	ea.	22467
Ultra-High Capacity Oxygen Trap	ea.	22468



Helium-Specific Click-On Inline Super-Clean™ Trap and Connector Kits

Description	qty.	cat.#
Kits		
Helium-Specific Carrier Gas Cleaning Kit, 1/8" Stainless Steel Includes (2) 1/8" SS connectors and (1) oxygen/moisture/hydrocarbon helium-specific triple trap	kit	22469
Helium-Specific Carrier Gas Cleaning Kit, 1/8" Brass Includes (2) 1/8" brass connectors and (1) oxygen/moisture/hydrocarbon helium-specific triple trap	kit	22470
Helium-Specific Carrier Gas Cleaning Kit, 1/4" Stainless Steel Includes (2) 1/4" SS connectors and (1) oxygen/moisture/hydrocarbon helium-specific triple trap	kit	22471
Helium-Specific Carrier Gas Cleaning Kit, 1/4" Brass Includes (2) 1/4" brass connectors and (1) oxygen/moisture/hydrocarbon helium-specific triple trap	kit	22472
Replacement Trap		
Helium-Specific Replacement Triple Trap (removes oxygen, moisture and hydrocarbons)	ea.	22473

did you know?

Helium-Specific Click-On Inline Super-Clean™ Trap and Kits are designed specifically for purification of helium in GC/MS systems!



Click-On Inline Super-Clean™ Indicator

- Oxygen: Green to Grey
- Moisture: Beige to Clear

Description	qty.	cat.#
Click-On Inline Super-Clean™ Indicator (oxygen, moisture)	ea.	22474

tech tip

Install an indicator after the Click-On inline filter so there is no confusion about when to replace the traps.



Click-On Inline Super-Clean™ Connectors

- Click-On connectors allow you to change traps quickly, without introducing oxygen into your system.

Description	qty.	cat.#
1/8" Brass Click-On Inline Super-Clean™ Connectors	2-pk.	22475
1/8" Stainless Steel Click-On Inline Super-Clean™ Connectors	2-pk.	22476
1/4" Brass Click-On Inline Super-Clean™ Connectors	2-pk.	22477
1/4" Stainless Steel Click-On Inline Super-Clean™ Connectors	2-pk.	22478



Click-On Inline Super-Clean™ Double Connector

- Connects any Click-On trap to a Click-On indicator.

Description	qty.	cat.#
Click-On Inline Super-Clean™ Double Connector, stainless steel	ea.	22479



Wall-Mounting Clamps for Click-On Inline Super-Clean™ Traps

Description	qty.	cat.#
Wall-Mounting Clamps for Click-On Inline Super-Clean™ Traps	4-pk.	22480



Replacement O-Rings for Click-On Inline Super-Clean™ Connectors

- Pack includes 10 large O-rings and 10 Small O-rings.

Description	qty.	cat.#
Replacement O-Rings for Click-On Inline Super-Clean™ Connectors	20-pk.	22481





Dual-Stage Ultra-High-Purity Brass Regulators

- Oxidation-resistant, chrome-plated.
- Most stable outlet pressure control throughout the life of a high-pressure gas cylinder.
- Secondary pressure regulation not needed.
- Less internal volume than stainless steel regulators.

Outlet pressure: 0 to 100psig
 Outlet gauge: 30" – 0 to 200psig
 Inlet gauge: 0 to 4000psig
 Outlet assembly: diaphragm valve, 1/4" tube fitting

Fitting	qty.	cat.#
CGA 580 (N ₂ , He, Ar)	ea.	21667
CGA 350 (H ₂ , P ₂)	ea.	21668
CGA 590 (Air)	ea.	21669



Single-Stage Ultra-High-Purity Brass Regulators

- Oxidation-resistant, chrome-plated.
- Use when there is secondary pressure regulation downstream.
- Identical gas purity protection as with our dual-stage regulators.

Outlet pressure: 0 to 100psig
 Outlet gauge: 30" – 0 to 200psig
 Inlet gauge: 0 to 4000psig
 Outlet assembly: diaphragm valve, 1/4" tube fitting

Fitting	qty.	cat.#
CGA 580 (N ₂ , He, Ar)	ea.	20646
CGA 350 (H ₂ , P ₂)	ea.	20647
CGA 590 (Air)	ea.	20648



Model FID-1000 and FID-2500 Gas Stations

- Single unit produces UHP zero air from house compressed air and 99.9995% pure hydrogen from deionized water.
- Ideal for supplying up to 5 - 6 FIDs.
- Eliminates inconvenient and dangerous cylinders.
- Silent operation, minimal operator attention required.

Specifications

Hydrogen Purity:	99.9995%
Zero Air Purity:	FID-1000: < 0.1ppm total hydrocarbons as methane FID-2500: < 0.05ppm total hydrocarbons as methane
Max. Hydrogen Flow Rate:	FID-1000: 90cc/min. FID-2500: 250cc/min.
Max. Zero Air Flow Rate:	FID-1000: 1000cc/min. FID-2500: 2500cc/min.
Power:	120VAC/amp, 60Hz, 400 watts
Hydrogen Outlet Pressure:	60 psig
Zero Air Outlet Pressure:	40-125 psig*
Inlet Connection:	1/4" NPT (female)
Outlet:	1/8" compression
Dimensions:	16.5" h x 10.5" w x 17" d (42cm x 27cm x 43cm)
Weight:	53 lbs. (24kg)

Parker Balston's Gas Stations provide both UHP grade hydrogen fuel gas and zero grade air for flame ionization detectors on gas chromatographs. The system is specifically designed to supply fuel gas to FIDs and to support flame thermionic and flame photometric detectors. The units produce zero air by purifying compressed air to a total hydrocarbon concentration of 0.1ppm or less (measured as methane).

The hydrogen generators produce hydrogen gas from deionized water, using the principle of electrolytic dissociation of water and hydrogen proton conduction through a proton exchange membrane cell.

Description	qty.	cat.#
Model FID-1000 Gas Station (ideal for 1 - 2 FIDs)	ea.	20177
Model FID-2500 Gas Station (ideal for 5 - 6 FIDs)	ea.	24913

Replacement Components for FID Gas Stations

Resin Bed Cartridge for Hydrogen Generators in FID-1000 and FID-2500 Gas Stations	ea.	24914
Replacement Desiccant Cartridge	ea.	21671
FID Gas Station Maintenance Kit (Includes 1 desiccant cartridge, 1 resin bed cartridge, 1 filter cartridge)	ea.	24915

*Zero air inlet requires minimum of 40psig compressed air pressure.

ordering note

For international orders, please add the appropriate power cord suffix from the table below.

free literature

For more information, download a free copy of our *FID Gas Stations Fast Facts* from www.restek.com!

lit. cat.# 580051

International Power Cord Sets

Just add the proper suffix to the catalog number for the gas generator you are ordering.

Location	qty.	cat.# suffix
United Kingdom (230VAC, 50/50Hz)	ea.	-550
European (230VAC, 50/60Hz)	ea.	-551
IEC Connector Only (230VAC, 50/60Hz)	ea.	-552
Japanese (200VAC, 50/60Hz)	ea.	-556
Japanese for Zero Air (100VAC, 50/60Hz)	ea.	-553
Japanese for Hydrogen (100VAC, 50/60Hz)	ea.	-554
Japanese for Nitrogen (100VAC, 50/60Hz)	ea.	-555

Instrument-Grade Welded and Drawn 304 Grade Stainless Steel Tubing

Clean tubing is critical to the delivery of pure gas to your instrument. Restek's Stainless Steel Tubing is specially cleaned for inertness by using the procedure for processing our Silcosteel® and Siltek®-treated products, because scrupulously clean parts are a prerequisite for a quality coating.

Tubing Dimensions		Length (per-foot pricing on 26 feet or more)		
ID (in.)	OD (in.)	25 Feet	26–100 Feet	> 100 Feet*
0.01" ID	1/16" OD	cat.# 21500	cat.# 21501	cat.# 21502
0.02" ID	1/8" OD	21503	21504	21505
0.03" ID	1/16" OD	21506	21507	21508
0.04" ID	1/16" OD	21509	21510	21511
0.085" ID	1/8" OD	21512	21513	21514
0.21" ID	1/4" OD	21515	21516	21517

*The availability of long lengths (continuous lengths up to 500 feet) is subject to inventory constraints. Please inquire before ordering.



ordering note

Required length in meters
x 3.2808 = length in feet.

ordering note

An extra charge is applied for cutting and/or straightening stainless steel and/or copper tubing, calculated from the total number of pieces produced for each line item

Cleaned Copper Tubing

- Adheres to ASTM B-280.
- Chromatographically free of background contamination.
- Use for plumbing GC systems.

ID	OD	Wall	qty.	cat.#
0.065"	1/8"	0.030"	50 ft.	21590
0.190"	1/4"	0.030"	50 ft.	21592

cleaned

All tubing is cleaned and ready to use.

GC Installation Kit

This kit contains the tubing and fittings needed to add an additional GC to your lab bench. Also included are four 1/8-inch tees, so carrier, fuel, and other GC gases can be routed to the new inlet or detector from existing gas lines. Order additional parts, such as purifiers or regulators, separately to customize the GC installation to your specifications. Kit includes: one tubing cutter, one 1/8-inch x 1/4-inch reamer, one 7/16-inch wrench, one 1/2-inch wrench, four 1/8-inch brass tees, ten 1/8-inch brass nuts, ten brass front and back ferrules, and 50 feet (15.2 meters) of our instrument-grade cleaned 1/8-inch copper tubing.

Description	qty.	cat.#
GC Installation Kit	kit	21325



tech tip

Plumbing a GC

It is essential to use clean chromatographic-grade tubing to plumb a GC. Standard-grade tubing contains residual hydrocarbon contaminants from the drawing process. These contaminants migrate into the gas stream, elevating background noise and causing down time.

For the *ultimate* in inertness, use

SILTEK®
tubing.

See our catalog or website.