



110 Benner Circle
Bellefonte, PA 16823-8812
Tel: (800)356-1688
Fax: (814)353-1309

Certificate of Composition

www.restek.com

Mfg. by: Nu-Chek Prep, Inc.

FOR LABORATORY USE ONLY-READ SDS PRIOR TO USE.

This Reference Material is intended for Laboratory Use Only as a standard for the qualitative and/or quantitative determination of the analyte(s) listed.

Catalog No. : 35012 Lot No.: F19-E
Description : FAME #3
Container Size : _____ Pkg Amt: _____
Expiration Date : See Note Storage: 0°C or below

Elution Order	Compound	CAS #	Percent Purity	Grav. Conc. (weight/weight%)
1	Methyl caprylate	111-11-5	99%	20.0 wt/wt%
2	Methyl decanoate	110-42-9	99%	20.0 wt/wt%
3	Methyl dodecanoate	111-82-0	99%	20.0 wt/wt%
4	Methyl myristate	124-10-7	99%	20.0 wt/wt%
5	Methyl palmitate	112-39-0	99%	20.0 wt/wt%
Solvent:	N/A			

Specific Reference Material Notes:

This standard is considered stable indefinitely when sealed in original ampul and stored at 0°C or below. Use immediately upon opening.

Column:
60m x .53mm x 1.5µm
Stabilwax (cat.#10672)

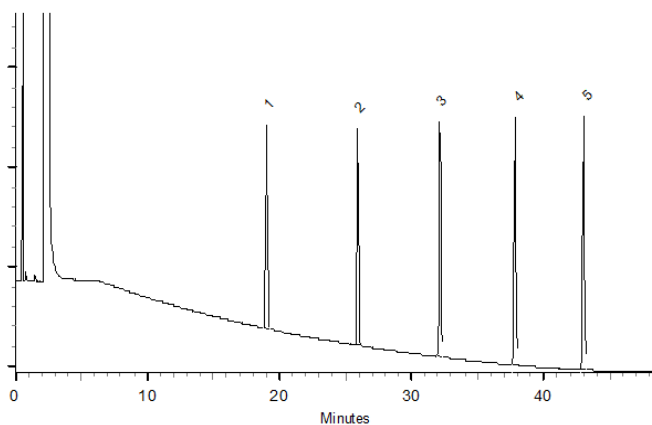
Carrier Gas:
hydrogen-constant pressure 20 psi

Temp. Program:
40°C (hold 6 min.) to 240°C
@ 4°C/min. (hold 10 min.)

Inj. Temp:
200°C

Det. Temp:
250°C

Det. Type:
FID



This chromatogram represents a general set of testing conditions chosen for product acceptance. For optimal results in your lab, conditions should be adjusted for your specific instrument, method, and application.


Justine Albertson - Operations Tech-ARM QC

Date Passed: 24-Feb-2020

REVIEWED
By Jennifer Pollino at 7:22 am, Feb 25, 2020

General Reference Material Notes

Gravimetric Concentration Value Notes:

- These values are not certified.

Handling Notes:

- If any undissolved material is visible inside the ampul, sonicate the unopened ampul until the material is completely dissolved.