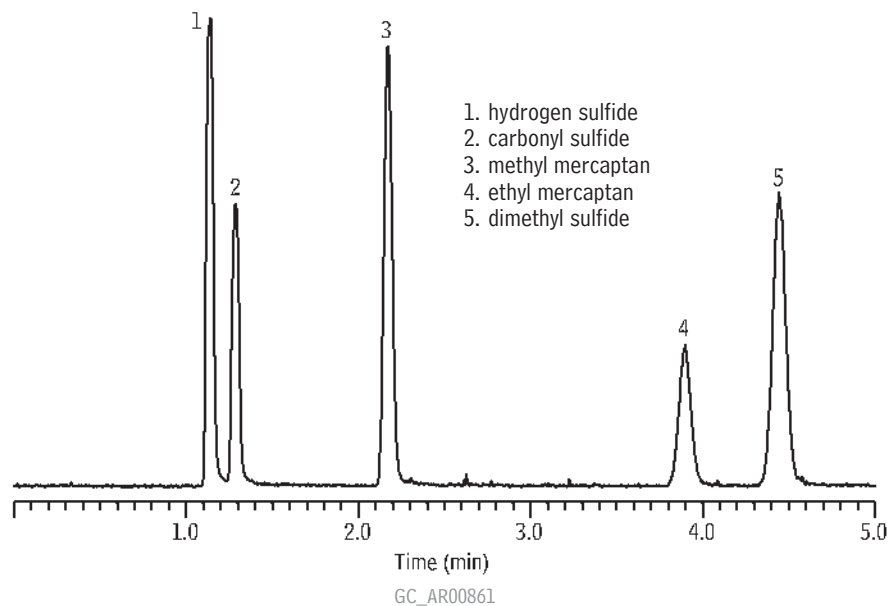


Sulfur Compounds Rxi™-1ms



Column: Rxi™-1ms, 30m, 0.32mm ID, 4.00 μ m (cat.# 13396)
Sample: hydrogen sulfide, carbonyl sulfide, methyl mercaptan,
ethyl mercaptan, dimethyl sulfide, 100 ppbv each in helium
Inj.: 1. mL splitless, direct
Sample loop temp.: 30°C
Carrier gas: helium, constant pressure
Linear velocity: 48cm/sec. @ 30°C
Oven temp.: 30°C
Det.: sulfur chemiluminescence detector
Det. temp.: 800°C

Sample storage & transfer:
SilcoCan™ air monitoring canister with Siltek® treated 1/4" valve (cat.# 24182-650); Sulfinert®
treated gas sample loop, 1cc (cat.# 22848); Sulfinert® treated gas sample loop, 10cc (custom order)