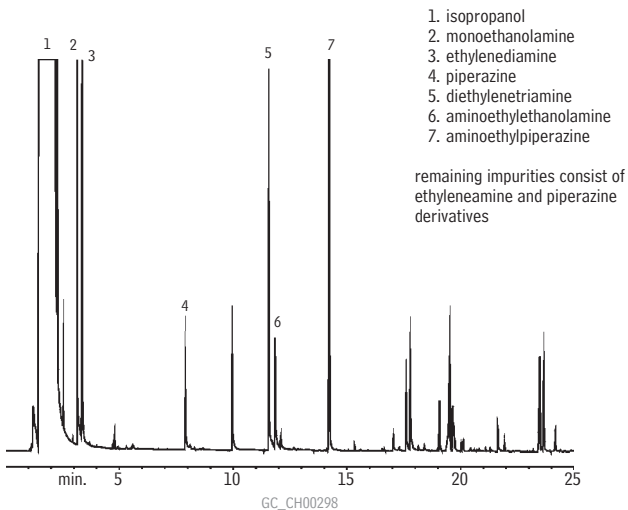


# Ethyleneamines

## Rtx<sup>®</sup>-5 Amine



30m, 0.25mm ID, 0.50 $\mu$ m Rtx<sup>®</sup>-5 Amine (cat.# 12338)  
3.0 $\mu$ L split injection of ethyleneamine industrial sample  
On-column conc.: ~5-80ng

Oven temp.: 40°C (hold 4 min.) to 315°C  
@ 10°C/min. (hold 5 min.)

Inj. & det. temp.: 315°C  
Carrier gas: hydrogen  
Linear velocity: 43cm/sec. set @ 40°C  
FID sensitivity: 6.4 x 10<sup>-11</sup> AFS  
Split ratio: 20:1