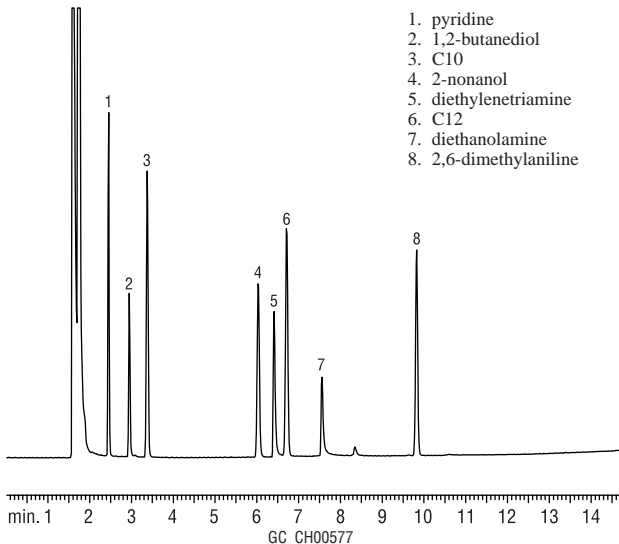


Amine Test Mix

Rtx[®]-35 Amine



Rtx[®]-35Amine 30m, 0.53mm ID, 1.0 μ m (cat.# 11355)
Sample: amine test mix (cat.# 35002), 450–900ppm in
methanol/methylene chloride
Inj.: 1.0 μ L, split (10:1), 4mm base-deactivated
single gooseneck (cat.# 20798-210.1)
Inj. temp.: 250°C
Carrier gas: helium, constant pressure
Linear velocity: 30cm/sec
Oven temp.: 110°C (hold 4 min.) to 200°C @
8°C/min. (hold 5 min.)
Det. FID @ 300°C