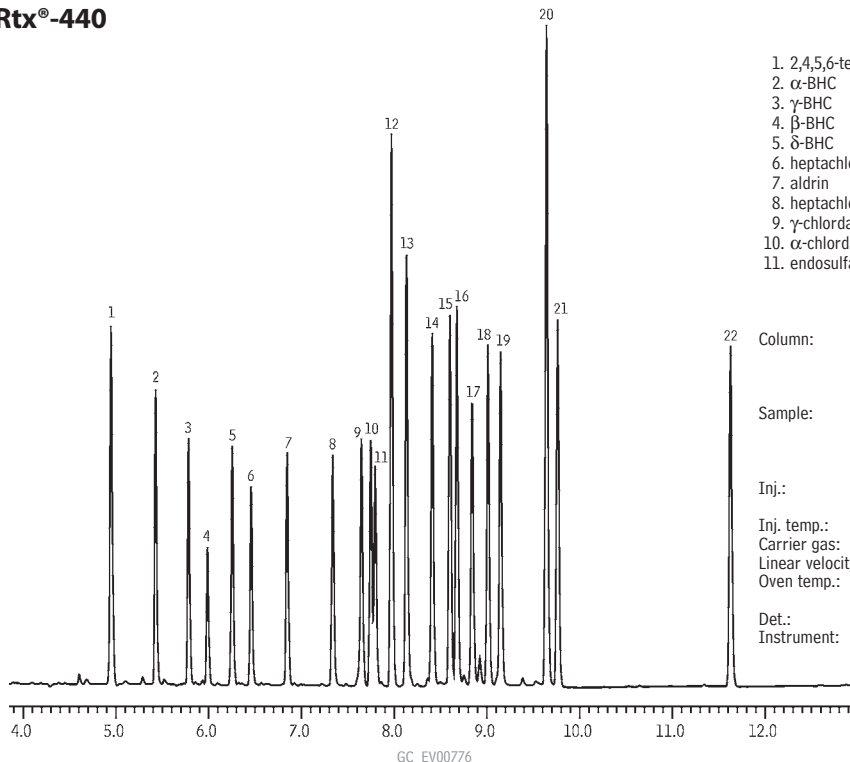


Organochlorine Pesticides

US EPA Method 8081

Rtx[®]-440



- | | |
|---|--------------------------------|
| 1. 2,4,5,6-tetrachloro-m-xylene (surr.) | 12. 4,4'-DDE |
| 2. α -BHC | 13. dieldrin |
| 3. γ -BHC | 14. endrin |
| 4. β -BHC | 15. 4,4'-DDD |
| 5. δ -BHC | 16. endosulfan II |
| 6. heptachlor | 17. endrin aldehyde |
| 7. aldrin | 18. 4,4'-DDT |
| 8. heptachlor epoxide | 19. endosulfan sulfate |
| 9. γ -chlordane | 20. methoxychlor |
| 10. α -chlordane | 21. endrin ketone |
| 11. endosulfan I | 22. decachlorobiphenyl (surr.) |

Column: Rtx[®]-440 30m, 0.32mm ID, 0.50 μ m (cat.# 12939) with 5m x 0.32mm ID Siltek[®] treated guard tubing (cat.# 10027), connected using SeCure[™] "Y" Connector Kit (cat.# 20277) with Universal "Y" Press-Tight[®] Connector

Sample: Organochlorine Pesticide Mix AB #2, 8-80 μ g/mL each component in hexane/toluene (cat.# 32292), Pesticide Surrogate Mix, 200 μ g/mL each component in acetone (cat.# 32000)

Inj.: 0.5 μ L splitless (hold 0.75 min.), 3.5mm Siltek[®] treated single gooseneck inlet liner (cat.# 20961)

Inj. temp.: 250 $^{\circ}$ C

Carrier gas: hydrogen, constant pressure

Linear velocity: 60cm/sec. @ 300 $^{\circ}$ C

Oven temp.: 110 $^{\circ}$ C (hold 0.5 min) to 230 $^{\circ}$ C @ 25 $^{\circ}$ C/min., to 330 $^{\circ}$ C @ 15 $^{\circ}$ C/min. (hold 1 min.)

Det.: ECD @ 330 $^{\circ}$ C

Instrument: Shimadzu GC-2010 FID/ECD with AOC-20i autosampler

Restek Corporation 110 Benner Circle Bellefonte, PA 16823

814-353-1300 • 800-356-1688 • Fax: 814-353-1309 • www.restek.com