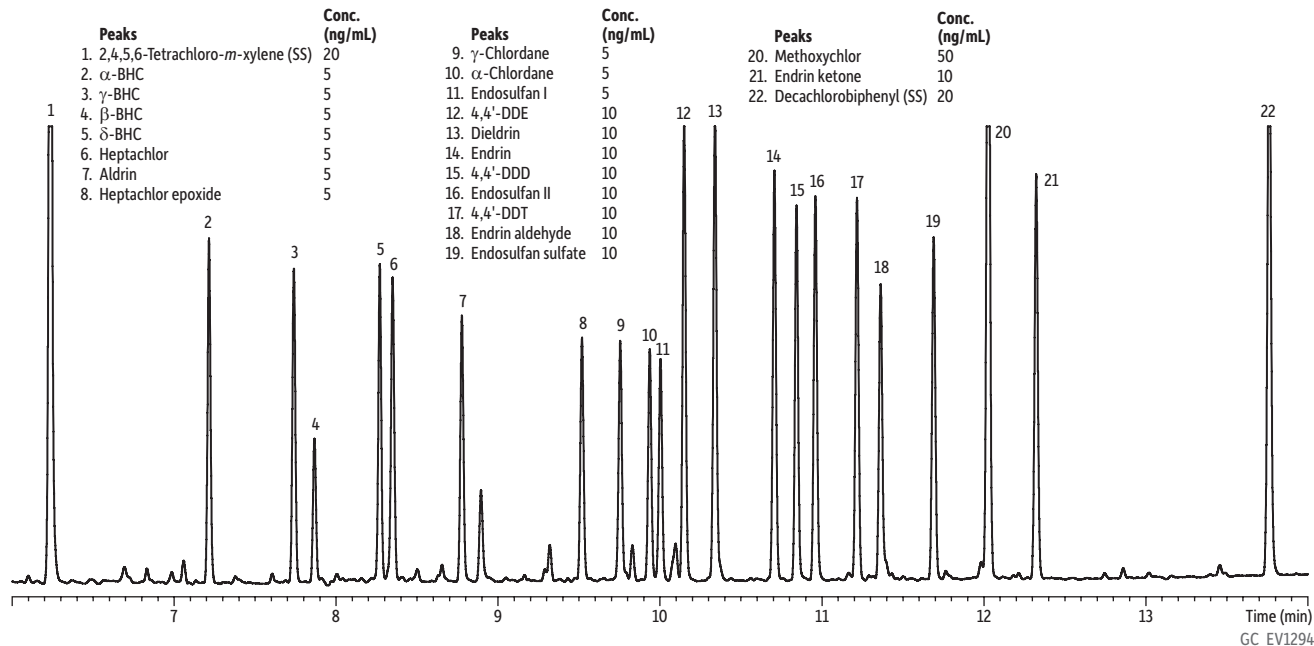


Florisil® SPE Cleanup of EPA 8081 Pesticides on Rtx®-CLPesticides2



Column Rtx®-CLPesticides2, 30 m, 0.32 mm ID, 0.25 μ m (cat.# 11324)
using Rxi® guard column 5 m, 0.32 mm ID (cat.# 10039)
with universal "Y" Press-Tight® connector (cat.# 20406-261)

Sample 2,4,5,6-Tetrachloro-*m*-xylene (cat.# 32027)
Decachlorobiphenyl (BZ #209) (cat.# 32029)
Organochlorine pesticide mix AB #2 (cat.# 32292)

Diluent: Hexane

Injection

Inj. Vol.: 2 μ L splitless (hold 0.75 min)
Liner: Premium 4 mm single taper w/wool (cat.# 23303.5)
Inj. Temp.: 250 °C
Purge Flow: 50 mL/min

Oven

Oven Temp: 110 °C (hold 0.5 min) to 320 °C at 15 °C/min (hold 5 min)

Carrier Gas

Carrier Gas: He, constant flow

Flow Rate:

Flow Rate: 3.5 mL/min

Detector

Make-up Gas

Flow Rate: 50 mL/min

Make-up Gas Type: N₂

Data Rate: 50 Hz

Instrument Notes

Agilent/HP6890 GC
SPE: Condition Florisil® tube (cat.# 24034) with 6 mL hexane.
Elute with hexane:acetone (90:10), collecting 10 mL. Concentrate to 1 mL.