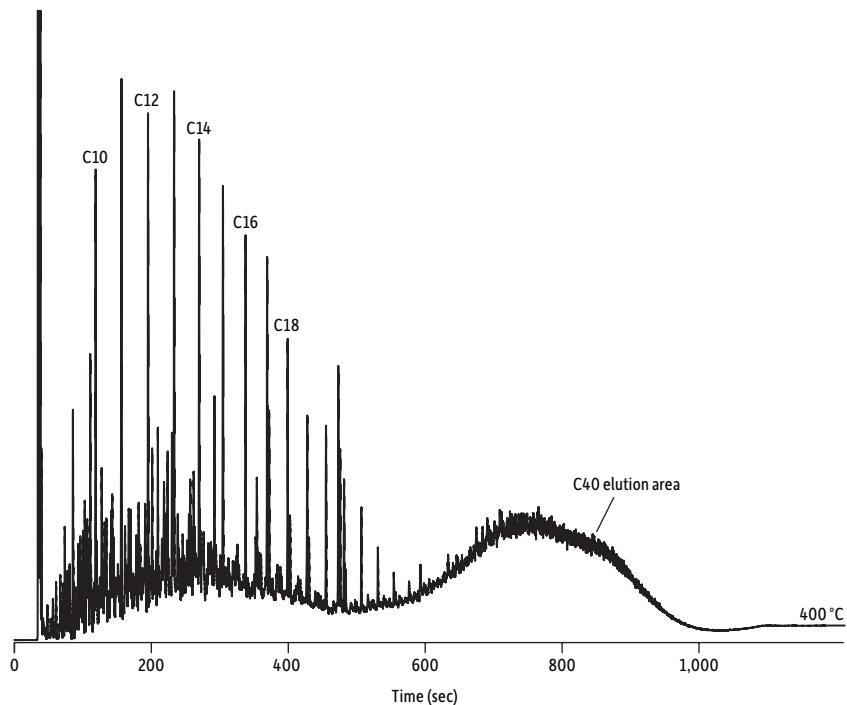


# DRO/ORO Calibration Standard on Rxi®-1HT (15 m x 0.25 mm x 0.10 µm)



GC\_EV1366

Peaks	tR (sec)
1. C10	118.7
2. C12	195.2
3. C14	269.6
4. C16	337.6
5. C18	399.2

**Column** Rxi®-1HT, 15 m, 0.25 mm ID, 0.10 µm (cat.# 13950)  
**Sample** DRO/ORO calibration standard (cat.# 31831)  
**Diluent:** Methylene chloride  
**Conc.:** 25,000 ng/µL  
**Injection**  
**Inj. Vol.:** 1 µL split (split ratio 50:1)  
**Liner:** Premium 4 mm Precision liner w/wool (cat.# 23305.5)  
**Inj. Temp.:** 275 °C  
**Split Vent**  
**Flow Rate:** 87.5 mL/min  
**Oven**  
**Oven Temp.:** 40 °C (hold 0.1 min) to 400 °C at 20 °C/min (hold 1.9 min)  
**Carrier Gas** H<sub>2</sub>, constant flow  
**Flow Rate:** 1.75 mL/min  
**Detector** FID @ 420 °C  
**Constant Column +**  
**Constant Make-up:** 50 mL/min  
**Make-up Gas Type:** N<sub>2</sub>  
**Hydrogen flow:** 40 mL/min  
**Air flow:** 450 mL/min  
**Data Rate:** 20 Hz  
**Instrument** Agilent/HP6890 GC  
**Notes** Actual column length was calculated to be 15.7 m using holdup time and EZGC® flow calculator (<http://www.restek.com/ezgc-mtfc>).