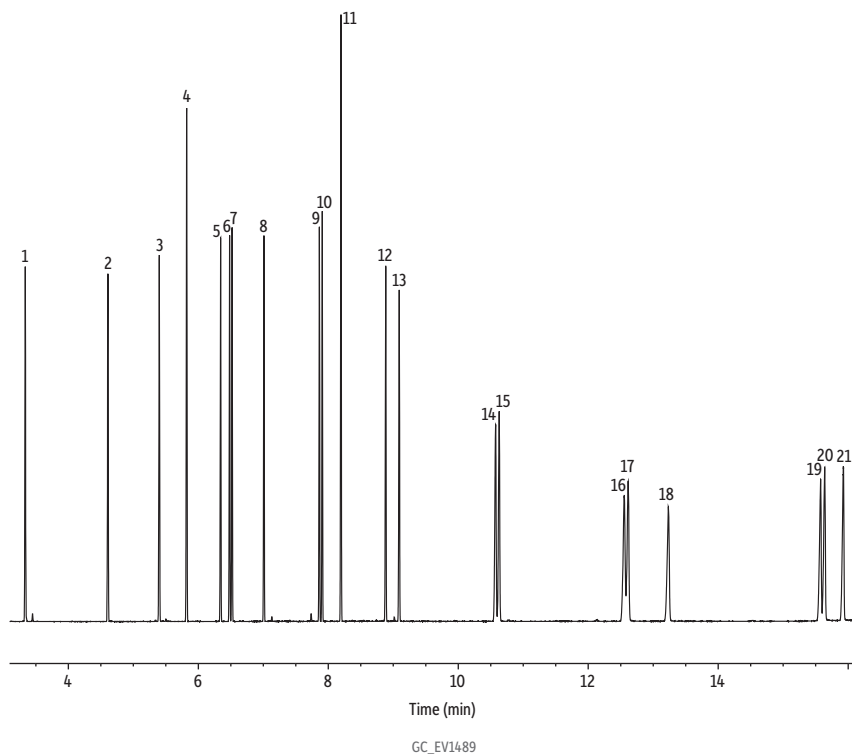


NJ DEP EPH Aromatics on Rxi-5Sil MS by Split Injection

- Fast analysis time.
- Split injection.



Column Rxi-5Sil MS, 30 m, 0.25 mm ID, 0.25 μ m (cat.# 13623)
Sample NJ DEP EPH 10/08 rev. 2 aromatics calibration standard (cat.# 30541)
 MA fractionation surrogate spike mix (cat.# 31480)
 o-Terphenyl (cat.# 31097)
 Methylene chloride

Diluent:
Injection
 Inj. Vol.: 1 μ L split (split ratio 10:1)
 Liner: Topaz 4 mm ID Precision inlet liner w/ wool (cat.# 23305)
 Inj. Temp.: 300 °C

Oven
 Oven Temp.: 55 °C (hold 0.5 min) to 150 °C at 20 °C/min to 250 °C at 30 °C/min to 280 °C at 5 °C/min to 345 °C at 30 °C/min (hold 3 min)

Carrier Gas
 Flow Rate: He, constant flow
 4 mL/min

Detector
 FID @ 340 °C

Make-up Gas
 Flow Rate: 45 mL/min

Make-up Gas
 Type: N₂

Hydrogen flow: 40 mL/min
Air flow: 450 mL/min
Data Rate: 50 Hz

Instrument Agilent 7890A GC

Peaks	tr (min)	Conc. (μ g/mL)
1. 1,2,3-Trimethylbenzene	3.33	125
2. Naphthalene	4.60	125
3. 2-Methylnaphthalene	5.40	125
4. 2-Fluorobiphenyl (SS)	5.82	200
5. Acenaphthylene	6.34	125
6. 2-Bromonaphthalene (SS)	6.48	200
7. Acenaphthene	6.52	125
8. Fluorene	7.01	125
9. Phenanthrene	7.86	125
10. Anthracene	7.90	125
11. o-Terphenyl (SS)	8.19	200
12. Fluoranthene	8.88	125
13. Pyrene	9.09	125
14. Benz[a]anthracene	10.57	125
15. Chrysene	10.63	125
16. Benzo[b]fluoranthene	12.55	125
17. Benzo[k]fluoranthene	12.61	125
18. Benzo[a]pyrene	13.23	125
19. Indeno[1,2,3-cd]pyrene	15.57	125
20. Dibenzo[a,h]anthracene	15.64	125
21. Benzo[ghi]perylene	15.92	125