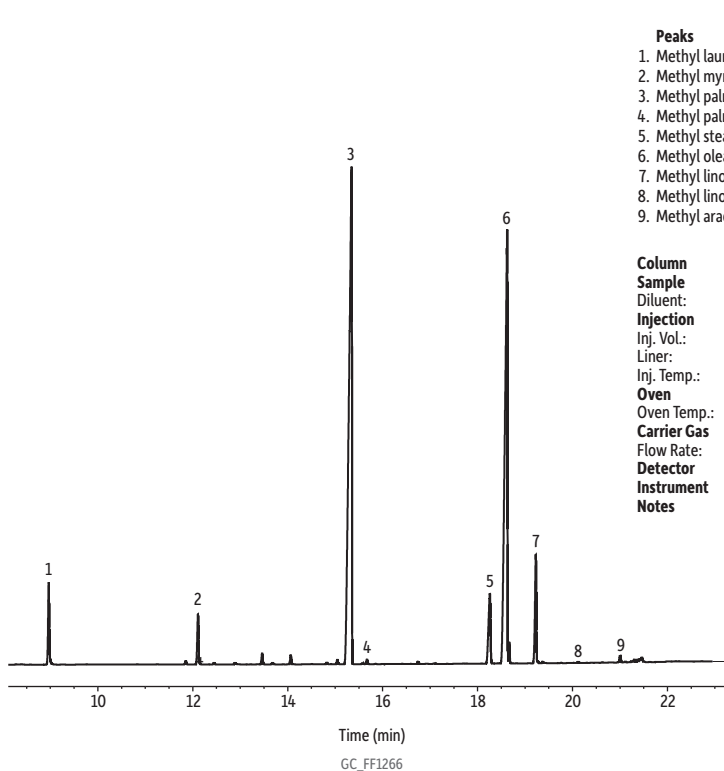


Palm Oil FAMES on Stabilwax



Peaks	tr (min)	Conc. (wt.%)	Structural Nomenclature
1. Methyl laurate	8.963	3.0	C12:0
2. Methyl myristate	12.106	2.0	C14:0
3. Methyl palmitate	15.344	50.2	C16:0
4. Methyl palmitoleate	15.668	1.5	C16:1 (<i>cis</i> -9)
5. Methyl stearate	18.254	4.4	C18:0
6. Methyl oleate	18.620	34.1	C18:1 (<i>cis</i> -9)
7. Methyl linoleate	19.224	4.5	C18:2 (<i>cis</i> -9,12)
8. Methyl linolenate	20.118	0.1	C18:3 (<i>cis</i> -9,12,15)
9. Methyl arachidate	21.001	0.2	C20:0

Column Stabilwax, 60 m, 0.25 mm ID, 0.25 μ m (cat.# 10626)
Sample Palm oil standard (Supelco #46962)
Diluent: Hexane
Injection
 Inj. Vol.: 1 μ L split (split ratio 100:1)
 Liner: Topaz 4 mm ID straight inlet liner w/ wool (cat.# 23300)
 Inj. Temp.: 225 °C
Oven
 Oven Temp.: 120 °C (hold 0.5 min) to 250 °C at 6 °C/min (hold 15 min)
Carrier Gas H₂, constant flow
 Flow Rate: 2 mL/min
Detector FID @ 250 °C
Instrument Agilent 7890A GC
Notes The sample was prepared using methanolic HCl.