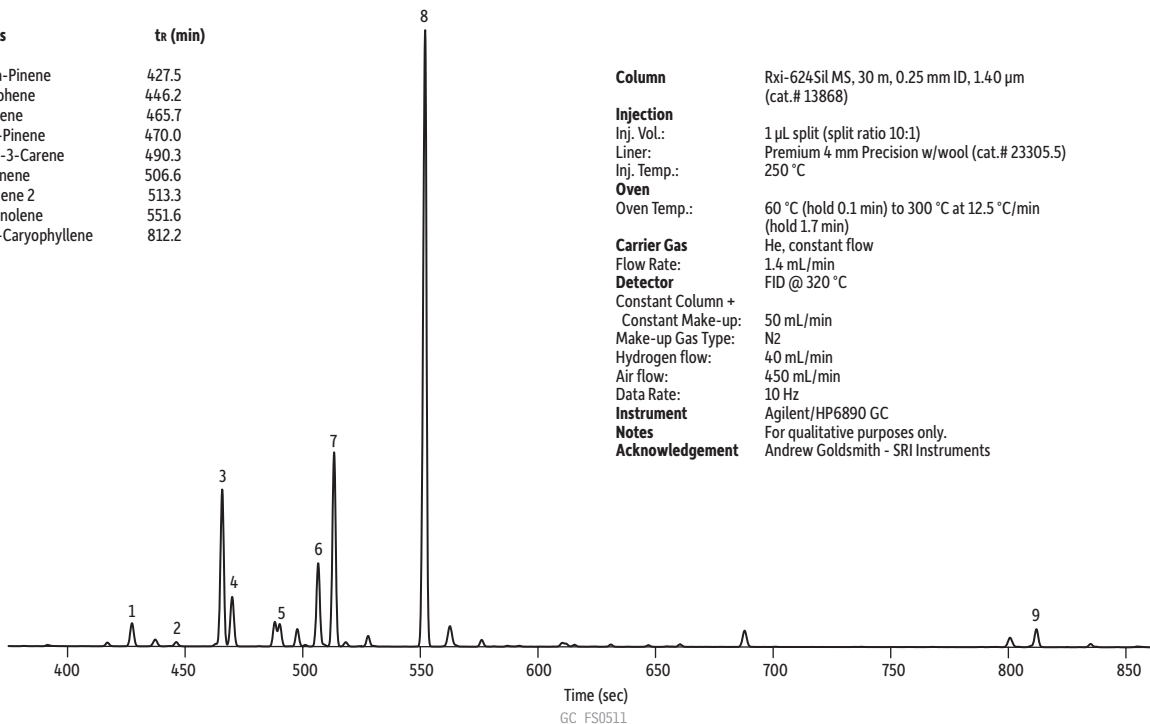


Terpenes in Blueberry Jack Cannabis on Rxi-624Sil MS

Peaks	tr (min)
1. alpha-Pinene	427.5
2. Camphene	446.2
3. Myrcene	465.7
4. beta-Pinene	470.0
5. delta-3-Carene	490.3
6. Limonene	506.6
7. Ocimene 2	513.3
8. Terpinolene	551.6
9. beta-Caryophyllene	812.2



Column Rxi-624Sil MS, 30 m, 0.25 mm ID, 1.40 μ m (cat.# I3868)

Injection
Inj. Vol.: 1 μ L split (split ratio 10:1)
Liner: Premium 4 mm Precision w/wool (cat.# 23305.5)
Inj. Temp.: 250 $^{\circ}$ C

Oven
Oven Temp.: 60 $^{\circ}$ C (hold 0.1 min) to 300 $^{\circ}$ C at 12.5 $^{\circ}$ C/min (hold 1.7 min)

Carrier Gas
Flow Rate: He, constant flow
1.4 mL/min

Detector
Constant Column +
Constant Make-up: 50 mL/min
Make-up Gas Type: N₂
Hydrogen flow: 40 mL/min
Air flow: 450 mL/min
Data Rate: 10 Hz

Instrument
Agilent/HP6890 GC

Notes
For qualitative purposes only.

Acknowledgement
Andrew Goldsmith - SRI Instruments

