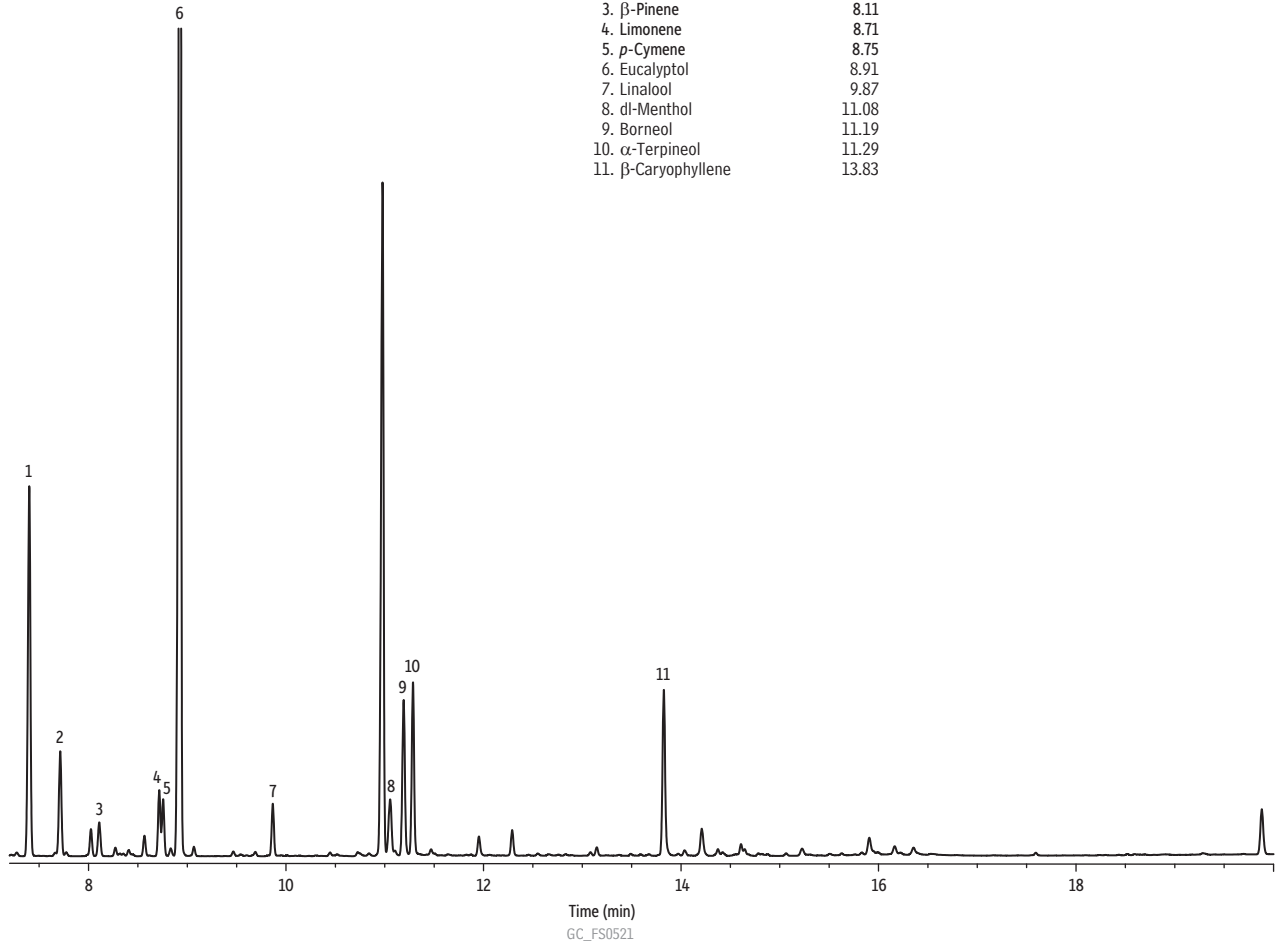


# Terpene Profile of Rosemary on Rxi®-624Sil MS by FET-HS-GC

Peaks	t <sub>R</sub> (min)
1. α-Pinene	7.39
2. Camphene	7.71
3. β-Pinene	8.11
4. Limonene	8.71
5. <i>p</i> -Cymene	8.75
6. Eucalyptol	8.91
7. Linalool	9.87
8. <i>dl</i> -Menthol	11.08
9. Borneol	11.19
10. α-Terpineol	11.29
11. β-Caryophyllene	13.83



**Column** Rxi®-624Sil MS, 30 m, 0.25 mm ID, 1.40 μm (cat.# 13868)  
**Sample**  
**Conc.:** 20 mg of ground rosemary  
**Injection** headspace-loop split (split ratio 10:1)  
**Liner:** Sky® 1.0 mm ID straight inlet liner (cat.# 23333.1)  
**Headspace-Loop**  
**Inj. Port**  
**Temp.:** 250 °C  
**Instrument:** Tekmar HT-3  
**Inj. Time:** 1.0 min  
**Transfer Line**  
**Temp.:** 160 °C  
**Valve Oven**  
**Temp.:** 160 °C  
**Needle Temp.:** 140 °C  
**Sample Temp.:** 140 °C  
**Sample Equil.**  
**Time:** 30.0 min  
**Vial Pressure:** 20 psi  
**Loop Pressure:** 15 psi

**Oven**  
**Oven Temp.:** 60 °C (hold 0.10 min) to 300 °C at 12.50 °C/min (hold 3.0 min)  
**Carrier Gas** He, constant flow  
**Linear Velocity:** 33 cm/sec  
**Detector** FID @ 320 °C  
**Make-up Gas**  
**Flow Rate:** 45 mL/min  
**Make-up Gas**  
**Type:** N<sub>2</sub>  
**Hydrogen flow:** 40 mL/min  
**Air flow:** 450 mL/min  
**Data Rate:** 20 Hz  
**Instrument** Agilent/HP6890 GC