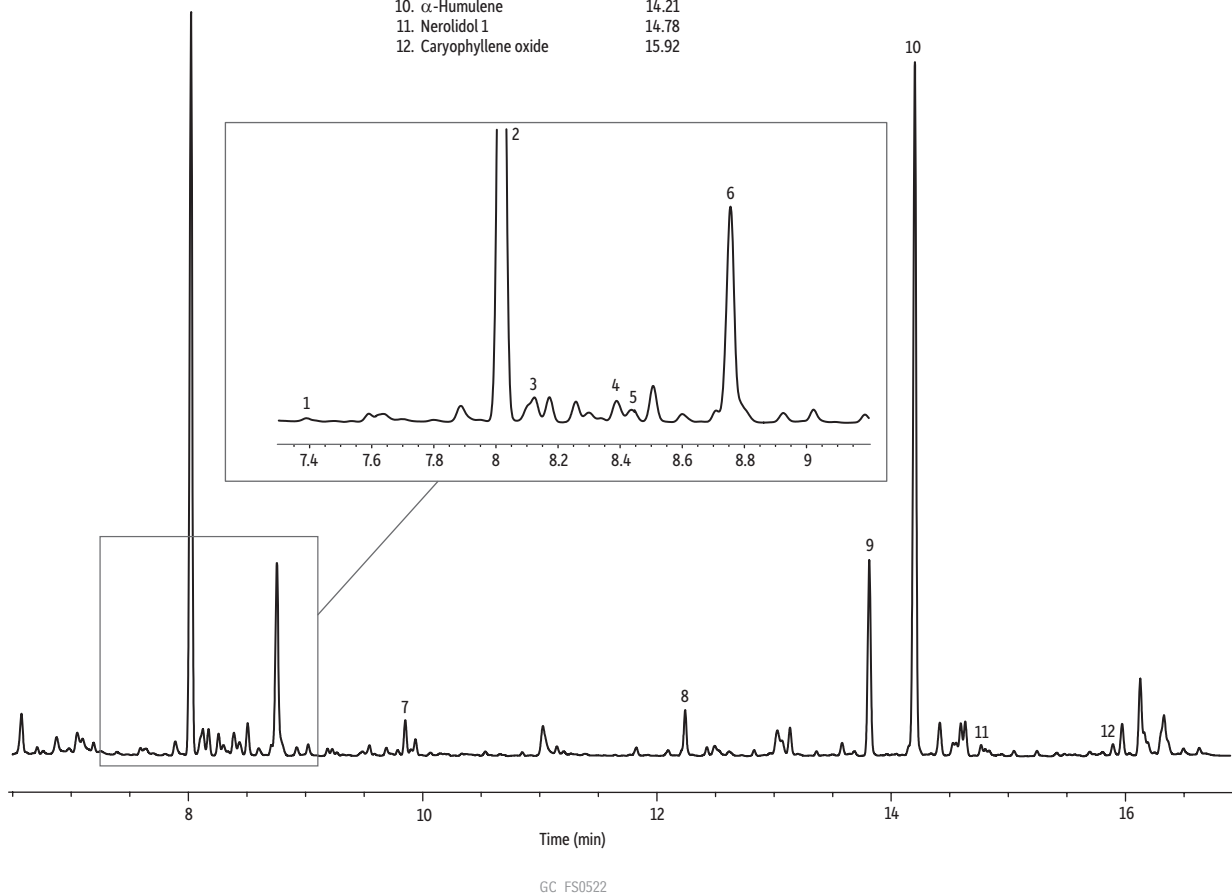


Terpene Profile of UK East Kent Golding Hops on Rxi®-624Sil MS by FET-HS-GC

Peaks	tr (min)
1. α -Pinene	7.39
2. β -Myrcene	8.02
3. β -Pinene	8.11
4. α -Phellandrene	8.40
5. δ 3-Carene	8.44
6. <i>p</i> -Cymene	8.75
7. Linalool	9.87
8. Citral-2	12.24
9. β -Caryophyllene	13.83
10. α -Humulene	14.21
11. Nerolidol 1	14.78
12. Caryophyllene oxide	15.92



Column Rxi®-624Sil MS, 30 m, 0.25 mm ID, 1.40 μ m (cat.# 13868)
Sample Conc.: 10 mg of ground UK East Kent Goldings hops
Injection headspace-loop split (split ratio 10:1)
 Liner: Premium 1.0 mm ID straight inlet liner (cat.# 23333.1)
Headspace-Loop
 Inj. Port Temp.: 250 °C
 Instrument: Tekmar HT-3
 Inj. Time: 1.0 min
 Transfer Line Temp.: 160 °C
 Valve Oven Temp.: 160 °C
 Needle Temp.: 140 °C
 Sample Temp.: 140 °C
 Sample Equil. Time: 30.0 min
 Vial Pressure: 20 psi
 Loop Pressure: 15 psi

Oven Oven Temp.: 60 °C (hold 0.10 min) to 300 °C at 12.50 °C/min (hold 3.0 min)
Carrier Gas He, constant flow
 Linear Velocity: 33 cm/sec
Detector FID @ 320 °C
 Make-up Gas Flow Rate: 45 mL/min
 Make-up Gas Type: N₂
 Hydrogen flow: 40 mL/min
 Air flow: 450 mL/min
 Data Rate: 20 Hz
Instrument Agilent/HP6890 GC