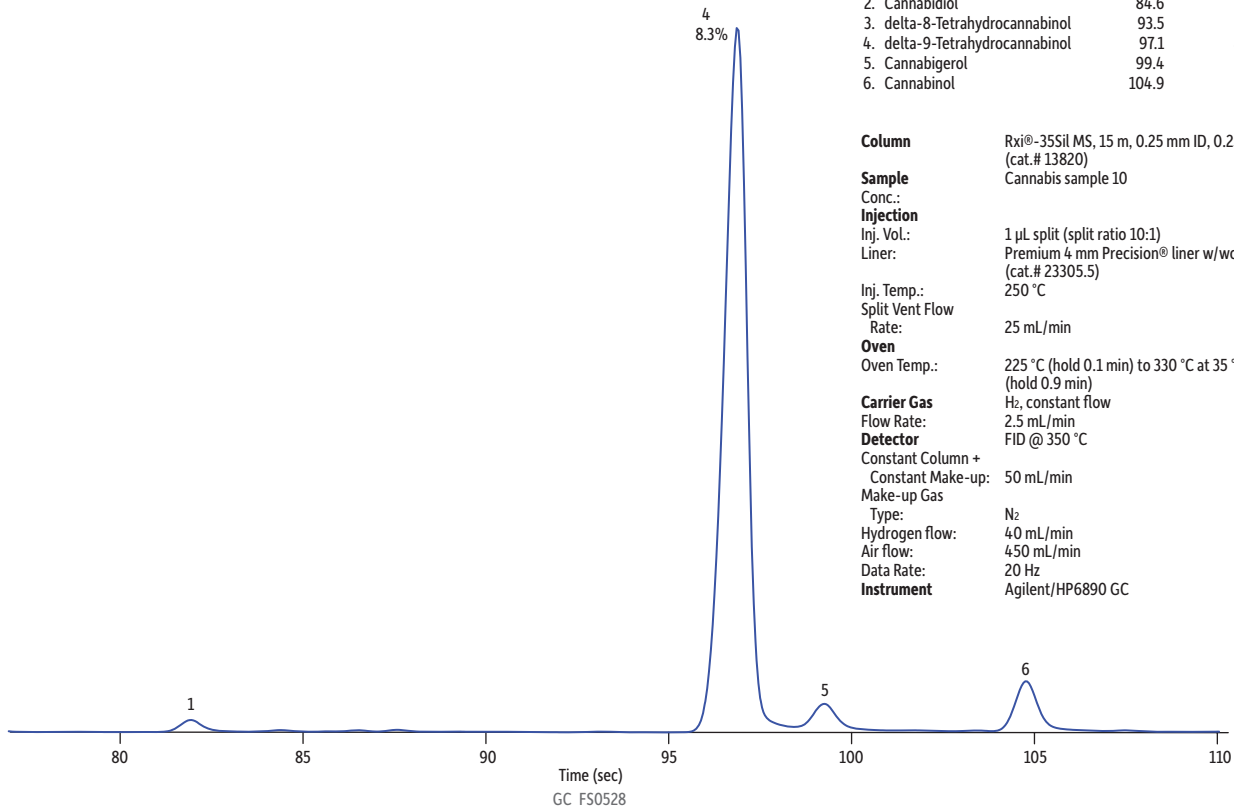


Cannabinoids in Cannabis Sample 10 on Rxi®-35Sil MS



Peaks	tr (sec)	Conc. (%)
1. Cannabichromene	82.0	-
2. Cannabidiol	84.6	-
3. delta-8-Tetrahydrocannabinol	93.5	-
4. delta-9-Tetrahydrocannabinol	97.1	8.3%
5. Cannabigerol	99.4	-
6. Cannabinol	104.9	-

Column Rxi®-35Sil MS, 15 m, 0.25 mm ID, 0.25 µm (cat.# 13820)

Sample Cannabis sample 10

Conc.:

Injection

Inj. Vol.: 1 µL split (split ratio 10:1)

Liner: Premium 4 mm Precision® liner w/wool (cat.# 23305.5)

Inj. Temp.: 250 °C

Split Vent Flow

Rate: 25 mL/min

Oven

Oven Temp.: 225 °C (hold 0.1 min) to 330 °C at 35 °C/min (hold 0.9 min)

Carrier Gas H₂, constant flow

Flow Rate: 2.5 mL/min

Detector FID @ 350 °C

Constant Column +

Constant Make-up: 50 mL/min

Make-up Gas

Type: N₂

Hydrogen flow: 40 mL/min

Air flow: 450 mL/min

Data Rate: 20 Hz

Instrument Agilent/HP6890 GC