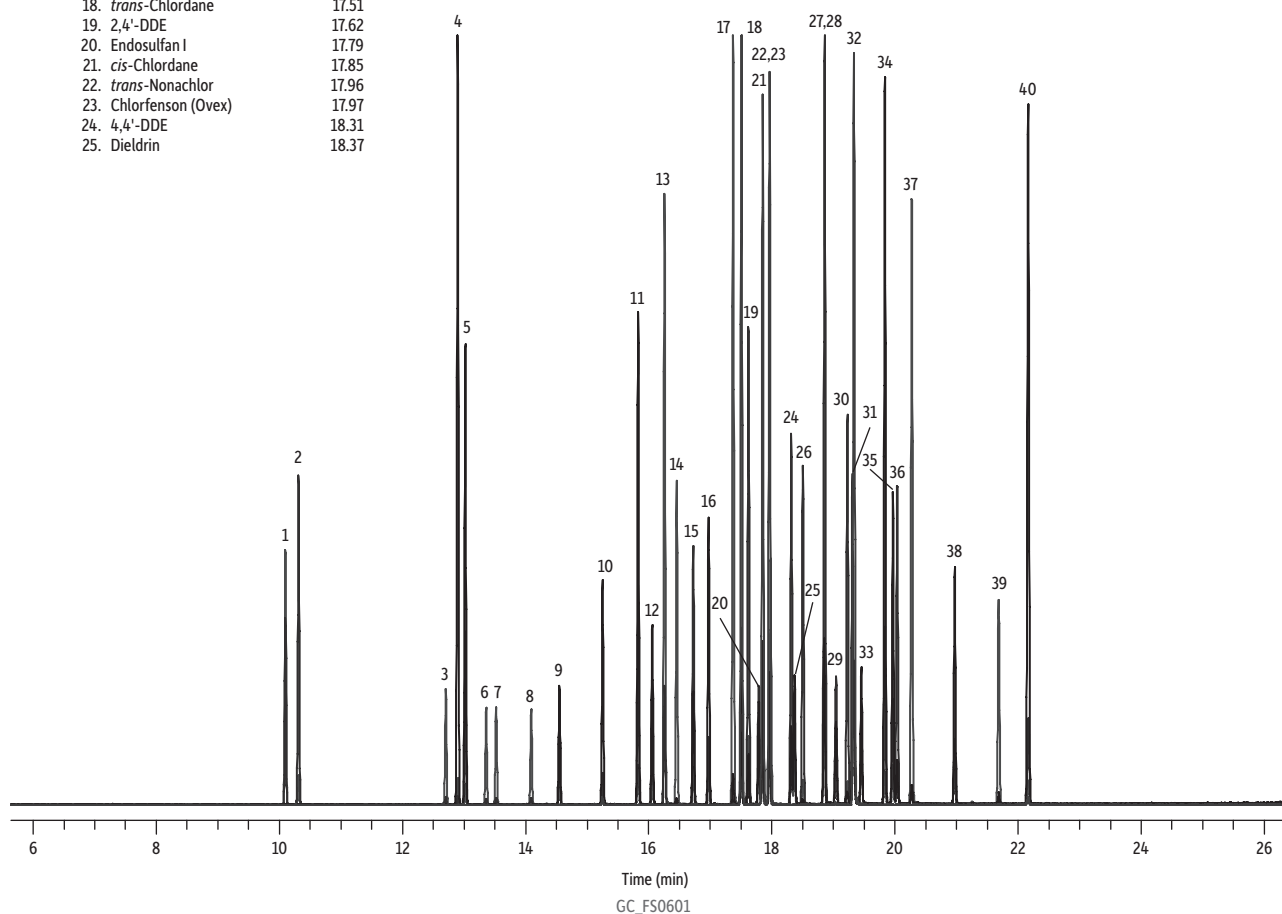


GC Multiresidue Pesticide Standard #2-OCP on Rxi®-5ms by GC-MS

Peaks	tr (min)	Peaks	tr (min)
1. Chloroneb	10.10	26. 2,4'-DDD	18.50
2. Pentachlorobenzene	10.31	27. Endrin	18.85
3. alpha-BHC	12.70	28. Ethylan (Perthane)	18.86
4. Hexachlorobenzene	12.90	29. Endosulfan II	19.04
5. Pentachloroanisole	13.02	30. 4,4'-DDD	19.23
6. beta-BHC	13.36	31. 2,4'-DDT	19.31
7. gamma-BHC (Lindane)	13.52	32. cis-Nonachlor	19.33
8. delta-BHC	14.09	33. Endrin aldehyde	19.45
9. Endosulfan ether	14.55	34. 4,4'-Methoxychlor olefin	19.84
10. Heptachlor	15.25	35. Endosulfan sulfate	19.97
11. Pentachlorothioanisole	15.83	36. 4,4'-DDT	20.04
12. Aldrin	16.06	37. 2,4'-Methoxychlor	20.27
13. 4,4'-Dichlorobenzophenone	16.26	38. Endrin ketone	20.97
14. Fenson	16.45	39. Tetradifon	21.68
15. Isodrin	16.72	40. Mirex	22.16
16. Heptachlor epoxide (Isomer B)	16.97		
17. Chlorbenside	17.37		
18. trans-Chlordane	17.51		
19. 2,4'-DDE	17.62		
20. Endosulfan I	17.79		
21. cis-Chlordane	17.85		
22. trans-Nonachlor	17.96		
23. Chlorfenson (Ovex)	17.97		
24. 4,4'-DDE	18.31		
25. Dieldrin	18.37		



Column Rxi®-5ms, 30 m, 0.25 mm ID, 0.25 µm (cat.# 13423)
Sample GC multiresidue pesticide standard #2-OCP (cat.# 32564)
Diluent: Toluene
Conc.: 100 µg/mL
Injection
Inj. Vol.: 1 µL split (split ratio 50:1)
Liner: Premium 4.0 mm ID Precision® inlet liner w/wool (cat.# 23305.1)
Inj. Temp.: 250 °C
Oven
Oven Temp.: 90 °C (hold 1 min) to 330 °C at 8.5 °C/min (hold 5 min)
Carrier Gas He, constant flow
Flow Rate: 1.4 mL/min
Detector MS
Mode: Scan

Scan Program:

Group	Start Time (min)	Scan Range (amu)	Scan Rate (scans/sec)
1	5	55-550	7

Transfer Line
Temp.: 290 °C
Analyzer Type: Quadrupole
Source Temp.: 325 °C
Electron Energy: 70 eV
Solvent Delay
Time: 5 min
Ionization Mode: EI
Instrument Thermo Scientific TSQ 8000 Triple Quadrupole GC-MS
Notes Reconstructed chromatogram from select ions.