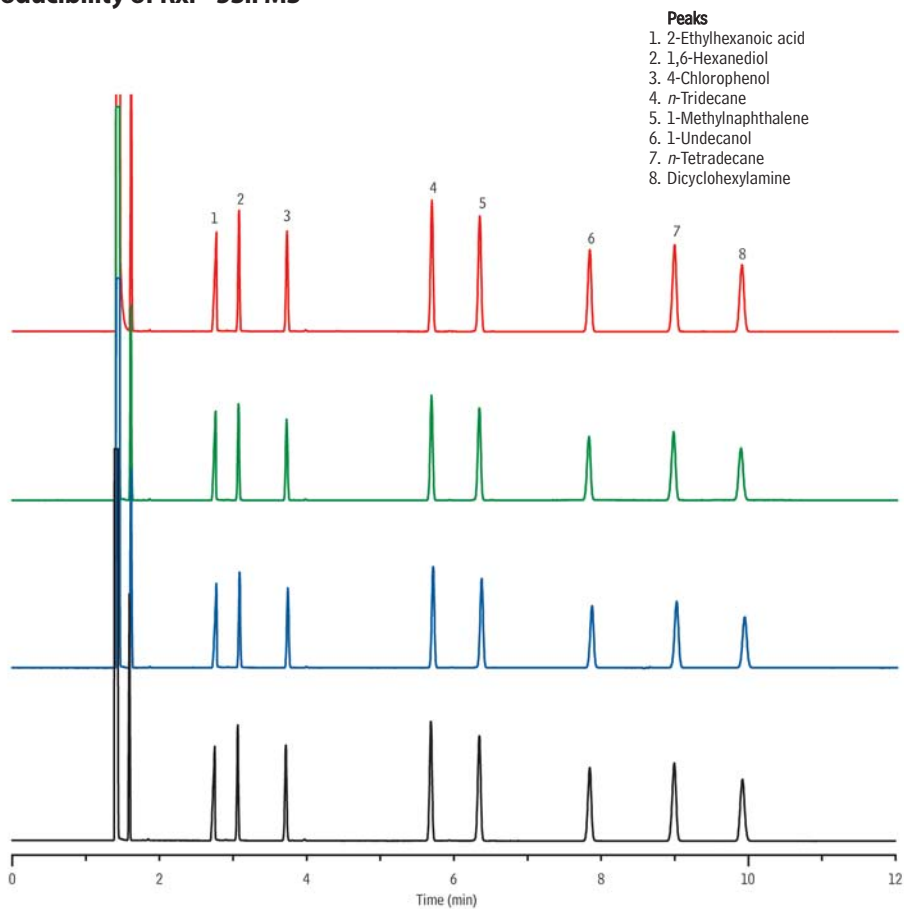


# Batch-to-Batch Reproducibility of Rxi®-5Sil MS



- Peaks**
1. 2-Ethylhexanoic acid
  2. 1,6-Hexanediol
  3. 4-Chlorophenol
  4. *n*-Tridecane
  5. 1-Methylnaphthalene
  6. 1-Undecanol
  7. *n*-Tetradecane
  8. Dicyclohexylamine

GC\_GN0050

**Column** Rxi®-5Sil MS, 30 m, 0.25 mm ID, 0.25  $\mu$ m (cat.# 13623)  
**Sample** Rxi®-5Sil MS/XLB Column Test Mix (cat.# 35226)  
**Diluent:** Methylene chloride  
**Conc.:** 350  $\mu$ g/mL  
**Injection**  
**Inj. Vol.:** 1.0  $\mu$ L split  
**Liner:** 4mm Gooseneck Precision® Liner w/ Wool (cat.# 22983)  
**Inj. Temp.:** 250 °C  
**Split Vent**  
**Flow Rate:** 60 mL/min.  
**Oven**  
**Oven Temp:** 125 °C  
**Carrier Gas** H<sub>2</sub>, constant pressure (8.7 psi, 60.0 kPa)  
**Linear Velocity:** 37 cm/sec. @ 125 °C  
**Dead Time:** 1.38 min. @ 125 °C  
**Detector** FID @ 320 °C  
**Make-up Gas**  
**Flow Rate:** 40 mL/min.  
**Make-up**  
**Gas Type:** N<sub>2</sub>  
**Data Rate:** 5 Hz  
**Instrument** HP5890 GC