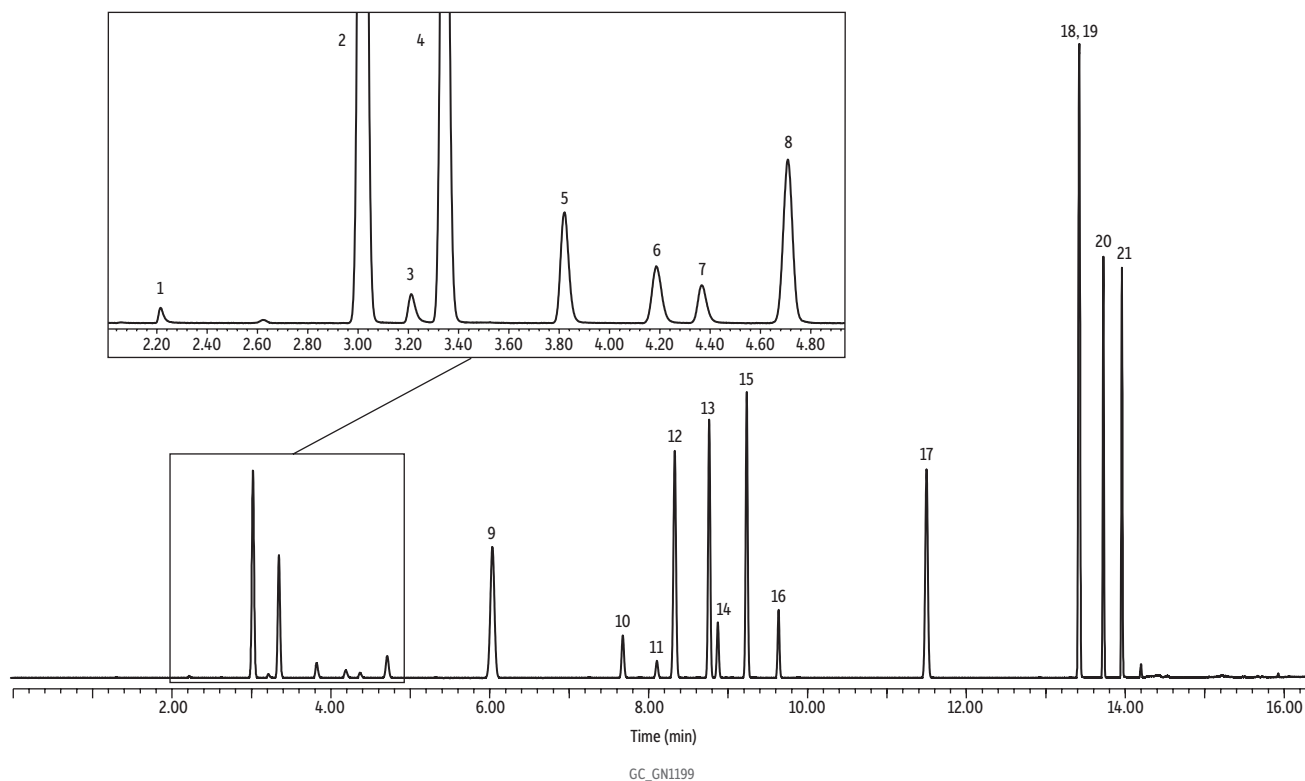


# Residual Solvents #1 on Rxi-624Sil MS



Peaks	tr (min)	Conc. (µg/mL)
1. Methanol	2.125	10
2. <i>n</i> -Pentane	3.018	10
3. Ethanol	3.212	10
4. Diethyl ether	3.344	10
5. Acetone	3.820	10
6. 2-Propanol	4.188	10
7. Acetonitrile	4.367	10
8. Methylene chloride	4.710	10
9. <i>n</i> -Hexane	6.033	10
10. Ethyl acetate	7.675	10
11. Chloroform	8.104	10
12. Cyclohexane	8.328	10
13. Benzene	8.763	10
14. 1,2-Dichloroethane	8.872	10
15. <i>n</i> -Heptane	9.236	10
16. Trichloroethene	9.637	10
17. Toluene	11.500	10
18. <i>m</i> -Xylene	13.421	10
19. <i>p</i> -Xylene	13.421	10
20. <i>o</i> -Xylene	13.725	10
21. N,N-Dimethylacetamide (solvent)	13.958	10

**Column** Rxi-624Sil MS, 30 m, 0.25 mm ID, 1.40 µm (cat.# 13868)  
**Sample** Residual solvents #1 (cat.# 34105)  
**Diluent:** N,N-Dimethylacetamide  
**Conc.:** 10 µg/mL  
**Injection**  
**Inj. Vol.:** 250 µL headspace-syringe split (split ratio 10:1)  
**Liner:** Topaz 1.8 mm ID straight/SPME inlet liner (cat.# 23280)  
**Inj. Temp.:** 280 °C  
**Headspace-Syringe**  
**Split Vent**  
**Flow Rate:** 20 mL/min  
**Instrument:** PAL RTC  
**Syringe Temp.:** 150 °C  
**Sample Temp.:** 80 °C  
**Sample**  
**Equil. Time:** 45 min  
**Inj. Speed:** 1700 µL/sec  
**Oven**  
**Oven Temp.:** 30 °C (hold 6 min) to 85 °C at 15 °C/min (hold 2 min) to 250 °C at 35 °C/min  
**Carrier Gas**  
**Flow Rate:** He, constant flow  
**Linear Velocity:** 2 mL/min  
**40.63 cm/sec**  
**Detector**  
**Flame Ionization Detector @ 320 °C**  
**Make-up Gas**  
**Flow Rate:** 40 mL/min  
**Make-up**  
**Gas Type:** N<sub>2</sub>  
**Hydrogen flow:** 45 mL/min  
**Air flow:** 450 mL/min  
**Data Rate:** 20 Hz  
**Instrument** Agilent 7890B GC