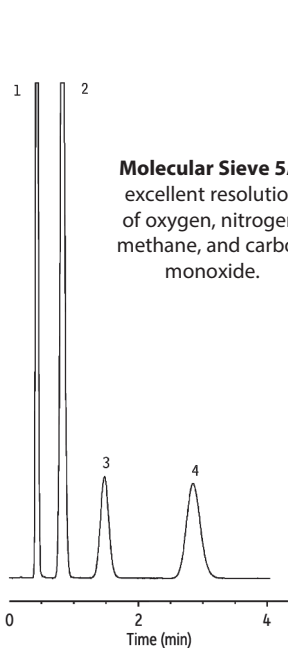
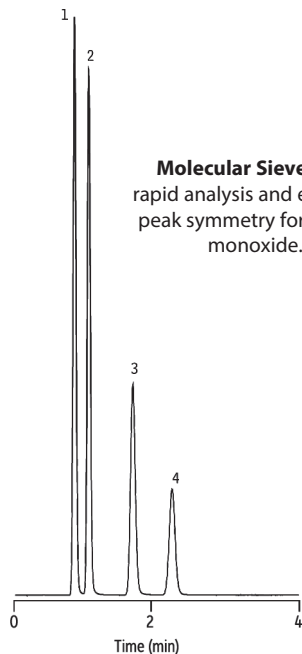


## Permanent Gases on Molecular Sieve 5A and Molecular Sieve 13X



Molecular Sieve 5A 80/100 mesh  
1 m x 1/8" x 2 mm ID SilcoSmooth tubing (cat.# 80440-800)



Molecular Sieve 13X 80/100 mesh  
2 m x 1/8" x 2 mm (ID) SilcoSmooth tubing (cat.# 80439-800)

- Peaks**
1. Oxygen
  2. Nitrogen
  3. Methane
  4. Carbon monoxide

**Columns** Molesieve 5A 1 m, 2 mm ID (cat.# 80440-800)  
and Molesieve 13X 2 m, 2 mm ID (cat.# 80439-800)  
5-10% each component, balance helium

**Sample Injection**  
Inj. Vol.: 10 µL Direct  
Inj. Temp.: 150 °C

**Oven**

50 °C

**Carrier Gas**

He, constant flow

Flow Rate:

30 mL/min

**Detector**

TCD @ 200 °C