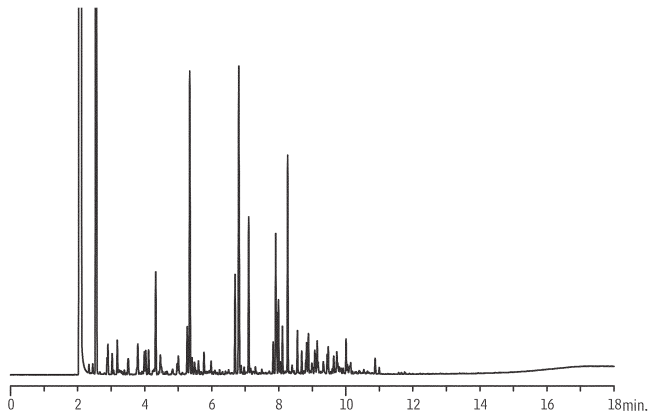


# Unleaded Gasoline

## Rxi®-1ms



GC\_PC01071

Column: Rxi®-1ms, 30m, 0.25mm ID, 0.25 $\mu$ m (cat.# 13323)  
Sample: 5,000 $\mu$ g/mL unleaded gasoline, unweathered, in methanol  
(cat.# 30096)  
Inj.: 1 $\mu$ L split (split ratio 20:1), 4mm single gooseneck liner w/ wool  
(cat.# 22405)  
Inj. temp.: 250°C  
Carrier gas: helium, constant flow  
Linear velocity: 28cm/sec. @ 50°C  
Oven temp.: 50°C (hold 2 min.) to 75°C @ 10°C/min. to 300°C @ 20°C/min.  
(hold 5 min.)  
Det.: FID @ 300°C