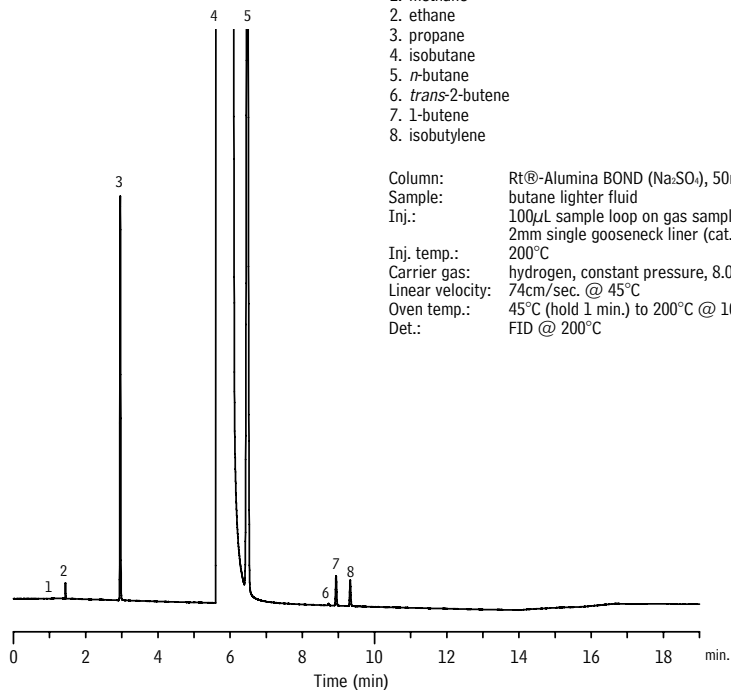


Butane Lighter Fluid

Rt®-Alumina BOND (Na₂SO₄)

1. methane
2. ethane
3. propane
4. isobutane
5. *n*-butane
6. *trans*-2-butene
7. 1-butene
8. isobutylene

Column: Rt®-Alumina BOND (Na₂SO₄), 50m, 0.53mm ID, 10μm (cat.# 19756)
Sample: butane lighter fluid
Inj.: 100μL sample loop on gas sampling valve, split (split vent flow 400mL/min.),
2mm single gooseneck liner (cat.# 20795)
Inj. temp.: 200°C
Carrier gas: hydrogen, constant pressure, 8.0psi
Linear velocity: 74cm/sec. @ 45°C
Oven temp.: 45°C (hold 1 min.) to 200°C @ 10°C/min. (hold 3.5 min.)
Det.: FID @ 200°C



GC_PC01083