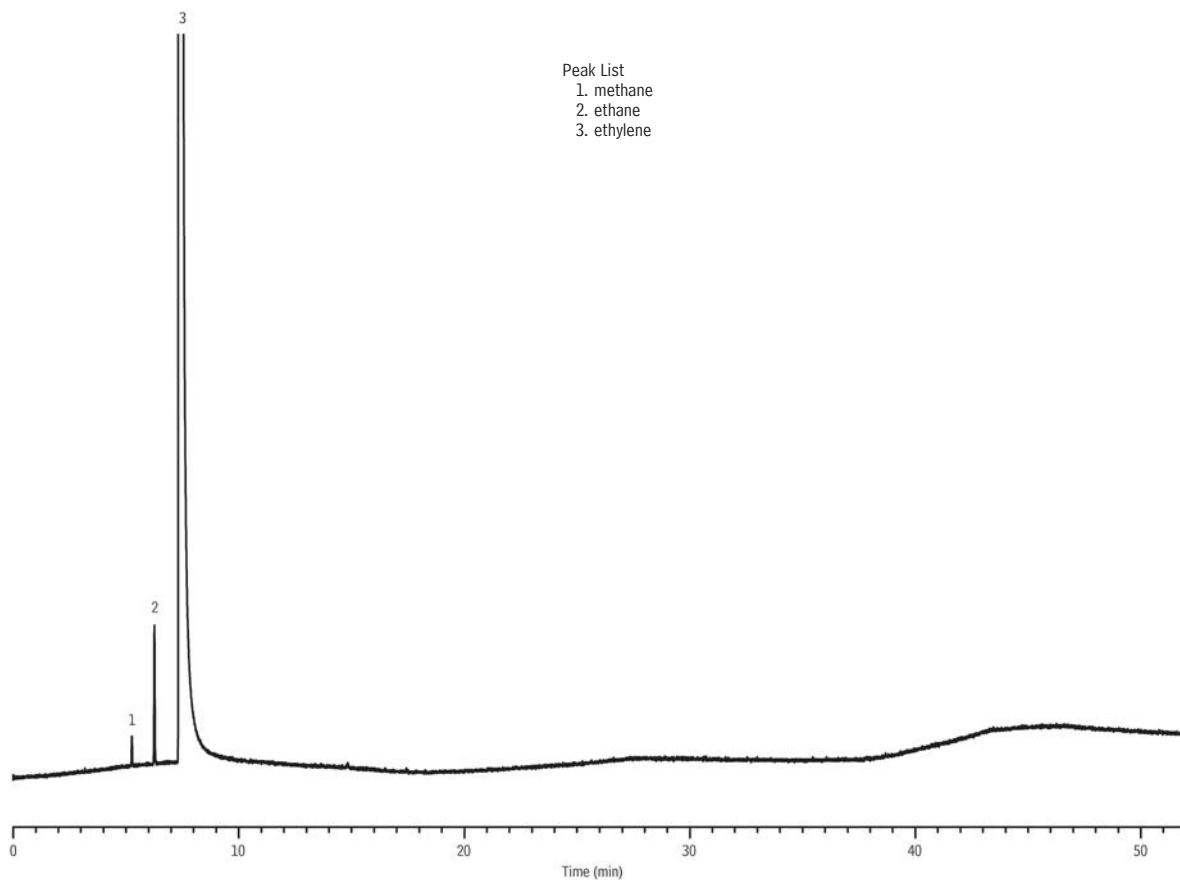


**Ethylene**  
**ASTM D6159-97**  
**Rt®-Alumina BOND/KCI, Rtx®-1**



Peak List  
1. methane  
2. ethane  
3. ethylene

GC\_PC01109

Column: Rt®-Alumina BOND/KCI, 50m, 0.53mm ID, 10.0 $\mu$ m (cat.# 19760) in series with Rtx®-1, 30m, 0.53mm ID, 5.0 $\mu$ m (cat.# 10179)  
Sample: ethylene  
Inj.: 1 $\mu$ L split, 60mL/min. split vent flow rate  
2mm splitless liner (cat.# 20712)  
Inj. temp.: 200°C  
Carrier gas: helium, constant pressure (8.0psi, 55.2kPa)  
Linear velocity: 25.4cm/sec. @ 35°C  
Oven temp.: 35°C (hold 2 min.) to 190°C @ 4°C/min. (hold 15 min.)  
(conditions as per ASTM D6159-97)  
Det.: FID @ 200°C  
Instrument: Agilent 5890