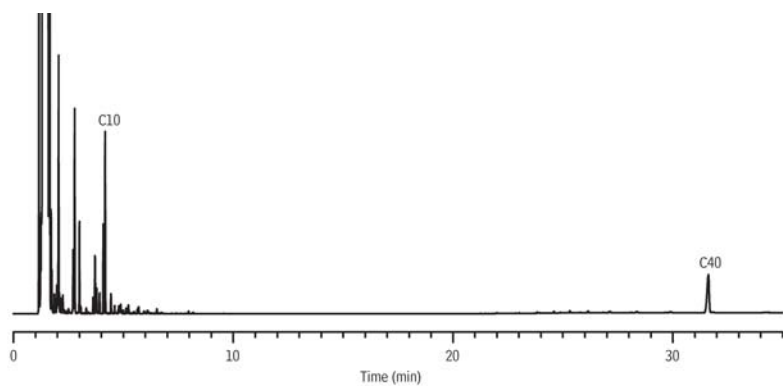


Gasoline on Rxi®-5HT



GC_PC1161

Column Rxi®-5HT, 30 m, 0.32 mm ID, 0.25 μ m (cat.# 13924)
using Rxi® guard column 2 m, 0.53 mm ID (cat.# 10054)
Sample unleaded gasoline composite (cat.# 30081)
Diluent: methanol
Conc.: 2,500 μ g/mL diluted to 500 ppm and spiked with C10 & C40
Injection
Inj. Vol.: 1 μ L cold on-column
Temp. Program: 53°C to 300°C at 10°C/min. (hold 20 min.)
Oven
Oven Temp: 50 °C to 300 °C at 10 °C/min. (hold 20 min.)
Carrier Gas H₂, constant flow
Linear Velocity: 40 cm/sec. @ 50 °C
Dead Time: 1.25 min. @ 50 °C
Detector FID @ 330 °C
Make-up Gas
Flow Rate: 30 mL/min.
Make-up
Gas Type: N₂
Data Rate: 20 Hz
Instrument Agilent/HP6890 GC