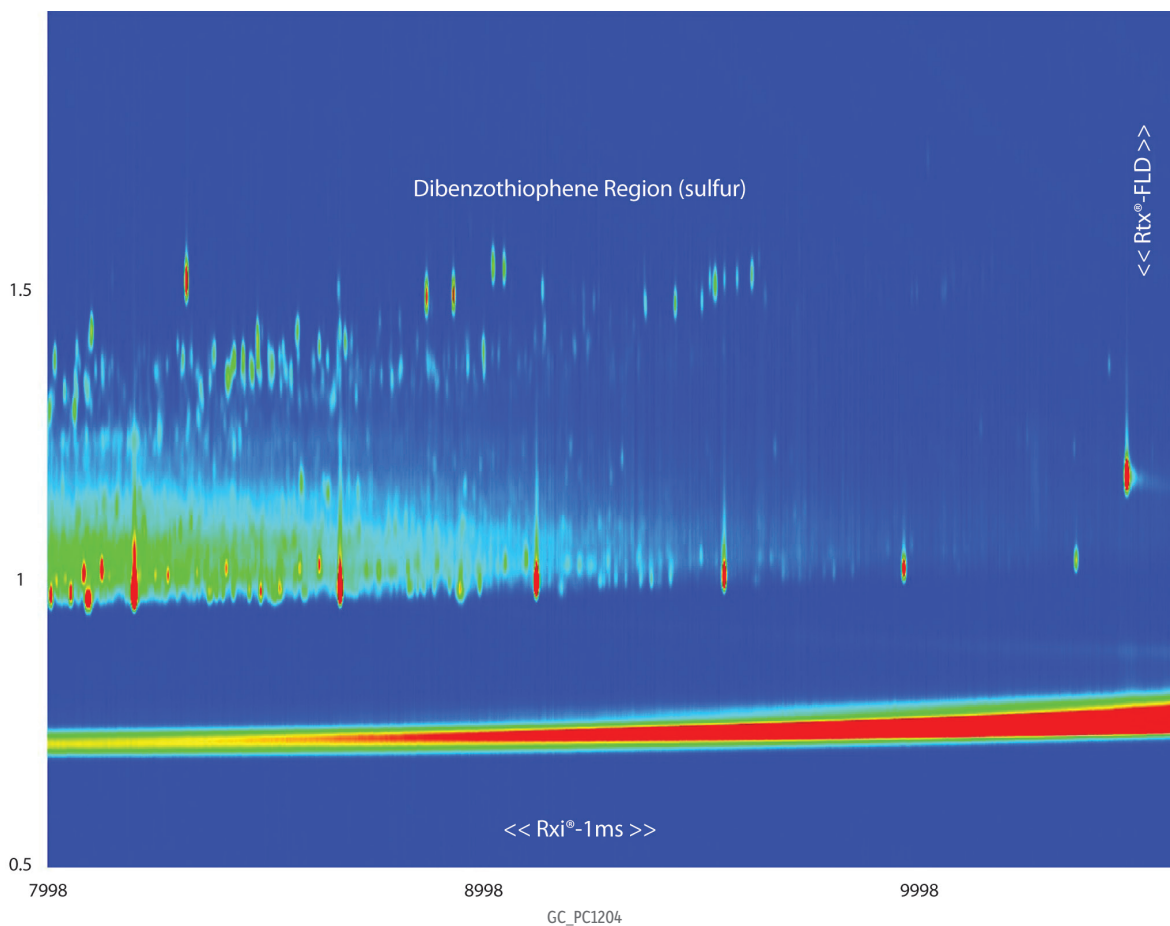


**Dibenzothiophene (Including C1-C4 Substitution) Elution Area for a Diesel Sample on Rxi®-1ms and Rtx®-FLD (GCxGC-TOFMS, TIC)**



GC\_PC1204

**Column** Rxi®-1ms 60 m, 0.25 mm ID, 0.25 µm (cat.# 13326) with Rxi®-1ms 60 m, 0.25 mm ID, 0.25 µm (cat.# 13326)  
 Rtx®-FLD 1.5 m, 0.25 mm ID, 0.10 µm

**Sample** Diesel fuel #2 composite (cat.# 31093)

**Diluent:** Methylene chloride

**Conc.:** 5,000 µg/mL

**Injection**

**Inj. Vol.:** 1 µL split (split ratio 50:1)

**Liner:** Premium 4 mm Precision® inlet liner w/wool (cat.# 23305.1)

**Inj. Temp.:** 275 °C

**Split Vent Flow Rate:** 100 mL/min.

**Oven**

**Oven Temp:** Rxi®-1ms: 40 °C (hold 1 min.) to 320 °C at 1.3 °C/min. (hold 1 min.)  
 Rtx®-FLD: 45 °C (hold 1 min.) to 325 °C at 1.3 °C/min. (hold 1 min.)

**Carrier Gas** He, corrected constant flow (2 mL/min.)

**Modulation**

**Modulator Temp. Offset:** 20 °C

**Second Dimension**

**Separation Time:** 3 sec.

**Hot Pulse Time:** 1 sec.

**Cool Time**

**between Stages:** 0.5 sec.

**Detector** TOFMS

**Transfer Line Temp.:** 300 °C

**Analyzer Type:** TOF

**Source Temp.:** 250 °C

**Electron Energy:** 70 eV

**Mass Defect:** 50 mu/100 u

**Solvent Delay Time:** 10 min.

**Tune Type:** PFTBA

**Ionization Mode:** EI

**Acquisition Range:** 45 to 450 amu

**Spectral Acquisition Rate:** 200 spectra/sec

**Instrument** LECO Pegasus 4D GCxGC-TOFMS

**Notes** The Rtx®-FLD column is an experimental column and is not yet commercially available.