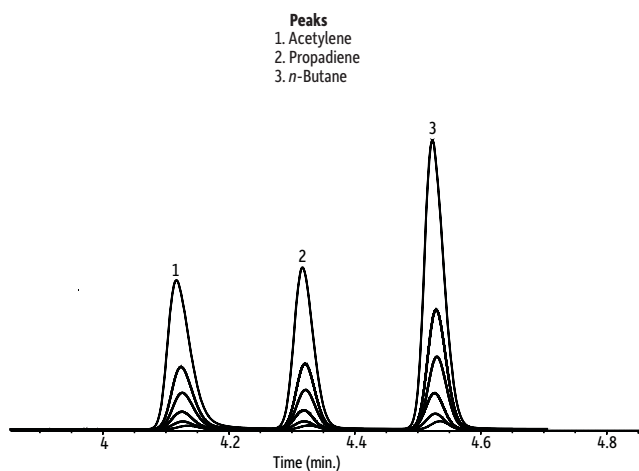


## Acetylene and Propadiene Capacity on Rt®-Alumina BOND/MAPD



GC\_PC1216

**Column** Rt®-Alumina BOND/MAPD, 50 m, 0.53 mm ID, 10 µm (cat.# 19778)  
**Sample** DCG custom standard (cat.# 547267)  
**Injection**  
Inj. Vol.: 5-250 µL split  
Liner: 2 mm single gooseneck (cat.# 20795)  
Inj. Temp.: 200 °C  
**Split Vent Flow**  
Rate: 80 mL/min.  
**Oven**  
Oven Temp: 130 °C (hold 8 min.)  
**Carrier Gas** He, constant pressure (4.4 psi, 30.3 kPa)  
Temp.: 130 °C  
**Detector** FID @ 200 °C  
**Instrument** HP5890 GC

Restek Corporation 110 Benner Circle Bellefonte, PA 16823  
814-353-1300 • 800-356-1688 • Fax: 814-353-1309 • [www.restek.com](http://www.restek.com)