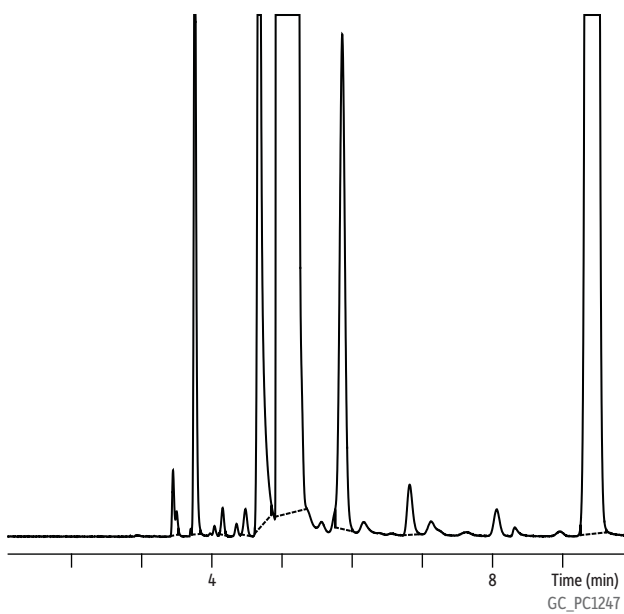


Impurities in Diethylamine on Rtx®-Volatile Amine



Column Rtx®-Volatile Amine, 60 m, 0.32 mm ID (cat.# 18078)
Sample Diethylamine
Injection
Inj. Vol.: 1 µL split (split ratio 15:1)
Inj. Temp.: 250 °C
Oven
Oven Temp: 120 °C
Carrier Gas: H₂, constant flow
Flow Rate: 2 mL/min
Detector FID @ 250 °C
Instrument Agilent/HP6890 GC